

# **Generic V4 Universal Print Driver**

## **System Administrator's Guide**

<b>Version</b>	<b>Date</b>
1.1	Feb/1/2022

## Revision History

Version	Date	Modified Contents	Description
1.0	Oct/5/2021	Initial version	Released edition
1.1	Feb/1/2022	<ul style="list-style-type: none"><li>• Trademark Credits</li><li>• 2.1. System requirements</li><li>• 3.1 Summary</li></ul>	Released edition

## Trademark Credits

PCL is a trademark of Hewlett-Packard Company.

Microsoft, Windows, Windows Server 2012, Windows Server2016, Windows Server2019, **Windows Server2022**, Windows 8.1, Windows 10, and **Windows 11** are U.S. registered trademarks of Microsoft Corporation.

## Target Driver Version

The information in this document applies to the following versions of Generic V4 Universal Print Drivers.

- Generic Universal V4 PCL Version 2.0

## Index

1. Introduction .....	6
2. Software Description .....	7
2.1. System requirements .....	7
2.2. V4 UPD Components .....	7
2.3. Supported Models .....	8
3. Installing, Uninstalling .....	12
3.1. Summary.....	12
3.2. Install.....	12
3.2.1. Installing in “Network Search” by using the Included Installer .....	12
3.2.2. Installing in “Network Search” by using the Included Installer .....	16
3.2.3. Manual Installation.....	19
3.2.4. Installation in Point and Print environment.....	27
3.3. Uninstallation .....	38
3.3.1. If You Installed the Software Using the Included Installer.....	38
3.3.2. Manual Uninstallation .....	41
3.3.3. Uninstallation in Point and Print environment .....	41
4. V4 Universal Print Driver’s UI .....	42
4.1. Printing Preferences UI.....	42
4.2. Device Settings UI .....	44
5. Using V4 Universal Print Driver.....	47
5.1. Changing the model.....	47
5.2. Changing the display language .....	50
5.3. Editing My Tab .....	52
5.3.1. Adding My Tab.....	53
5.3.2. Deleting My Tab .....	57
5.3.3. Moving My Tab .....	57
5.4. Adding Favorite Setting.....	58
5.5. Editing Favorite Setting .....	59
5.5.1. Deleting Favorite Setting .....	61
5.5.2. Moving Favorite Setting.....	62
5.5.3. Editing Favorite Print Setting.....	62
5.5.4. Edit Favorite Setting.....	64
5.6. Administrator Customization .....	66
5.6.1. Print setting of customization target.....	66

5.6.2.	Setting method .....	67
5.6.3.	Export and import the setting of Administrator Customization .....	70
6.	Frequently Asked Questions.....	73
7.	Appendix.....	74
7.1.	List of support functions of each model .....	74

# 1. Introduction

Generic V4 Universal Print Driver supports the new printing system V4 architecture that is available from Windows 8.

## **User Benefits**

- **UI suitable for touch operation**

Generic V4 Universal Print Driver has a new UI that supports touch operation. It solves the problem that it is hard to operate when using a conventional driver with a tablet PC.

## 2. Software Description

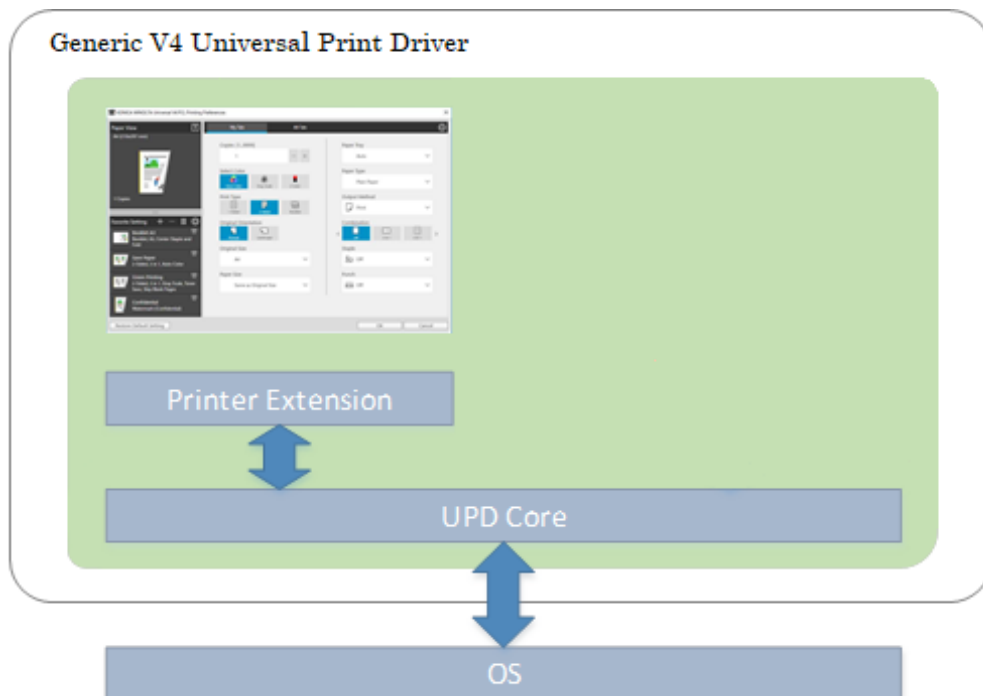
### 2.1. System requirements

Generic V4 Universal Print Driver supports the following OS versions.

- Windows
  - Windows 8.1
  - Windows 10
  - **Windows 11**
  - Windows Server 2012 R2
  - Windows Server 2016
  - Windows Server 2019
  - **Windows Server 2022**

### 2.2. V4 UPD Components

Generic V4 Universal Print Driver consists of types of component: UPD Core, Printer Extension (PE). UPD Core is the core module of V4 UPD, Provides main functionality such as printing. Printer Extension is an application that generates the Printing Preferences screen when printing from desktop applications. It is provided in combination with UPD Core.



**Figure 2.2-1 V4 UPD Components**

## 2.3. Supported Models

The table below lists the products supported by Generic V4 Universal Print Driver. Supporting functions of Generic V4 Universal Print Driver are limited compared to normal drivers. See Error! Reference source not found. Error! Reference source not found. for details about supporting functions.

A3 Color	65C-9
	55C-9
	45C-9
	36C-9
	30C-9
	25C-9
	28C-8
	22C-8
	26C-7
	22C-7
	60C-6 (e)
	60C-7 (e)
	55C-6 (e)
	45C-6 (e)
	36C-6 (e)
	28C-6 (e)
	22C-6 (e)
	70C-10
	65C-10
	28C-2
	22C-2
	22C-3
	36C-0i
	30C-0i
	25C-0i
	65C-0i
	55C-0i
	45C-0i
	28C-7i



	25C-7i
	22C-7i
	28C-6i
	26C-6i
	25C-6i
	22C-6i
	70C-0i
<b>A3 BW</b>	95BW-9
	80BW-9
	75BW-9
	55BW-9
	45BW-9
	36BW-8
	28BW-8
	22BW-8
	75BW-5 (e)
	65BW-5 (e)
	55BW-5e
	45BW-5e
	36BW-5e
	28BW-5e
	22BW-5e
	36BW-9
	30BW-9
	65BW-9e
	55BW-9e
	45BW-9e
	36BW-9e
	30BW-9e
	30BW-6i
	26BW-6i
	24BW-6i
	22BW-6i
	65BW-0i
	55BW-0i

	45BW-0i
	36BW-0i
	30BW-0i
<b>A4 Color</b>	C MF385-2
	C MF335-2
	C MF385-2FS
	C MF335-1
	C MF385-1
	C MF385-1FS
	C MF310P-1
	C MF311-1
	C405-0i
	C335-0i
	C400-0i
	C330-0i
	C332-0i
<b>A4 BW</b>	BW MF475-1
	BW MF405-1
	BW MF475-3
	BW MF405-3
	LP4700-1
	LP4000-1
	LP3300-1
	LP3301-1
	BW MF402-1
	BW MF332-1
	LP470P-3
	LP440P-3
	LP360P-3
	BW MF442-3
	BW MF362-3
	BW 502-0i
	BW 500-0i
	BW 402-0i

	BW 400-0i
	BW475-0i
	BW405-0i
	BW470-0i
Baseline *1	

**Table 2-1 Products supported by Generic V4 Universal Print Driver**

\*1: This is a common model. If a driver does not support by Generic V4 Universal Printer Driver or a third-party device is selected, it is also possible to send print data. However, Cannot guarantee the printing results.

## 3. Installing, Uninstalling

### 3.1. Summary

By using the included installer/uninstaller (\*1), you can easily install or uninstall the Generic V4 Universal Print Driver.

\*1: Execute "Setup.exe" in the case of x86 environment, "Setup64.exe" in the case of x64 environment. In the case of ARM64 environment, execute "SetupARM64\_Win11.exe" for Windows 11 and "SetupARM64\_Win10.exe" for Windows 10.

### 3.2. Install

#### 3.2.1. Installing in “Network Search” by using the Included Installer

1. Execute “Setup.exe”.
2. Check the Software End User License Agreement, and if there are no problems, click “Agree”.

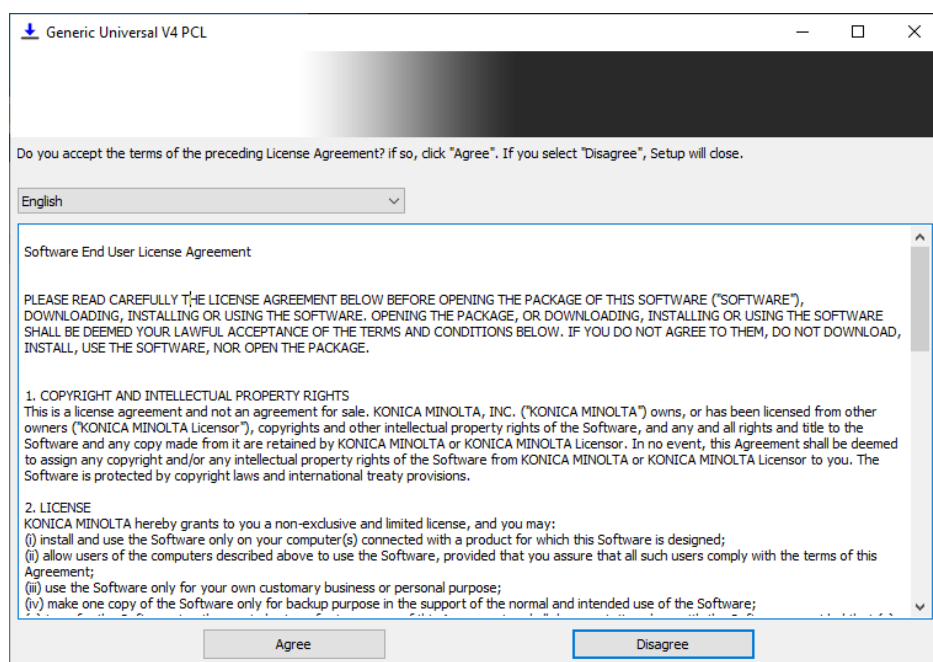
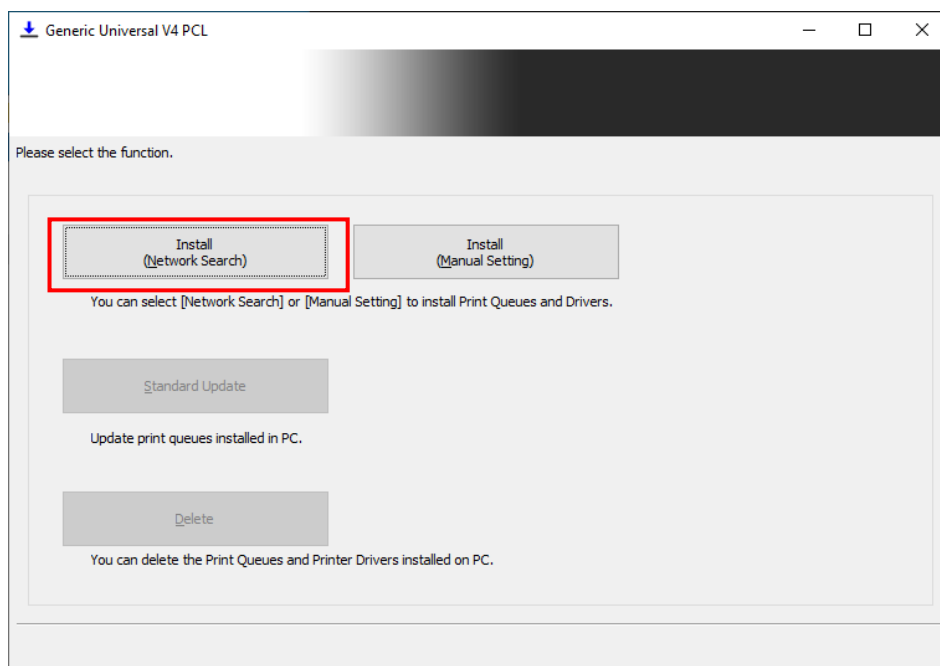


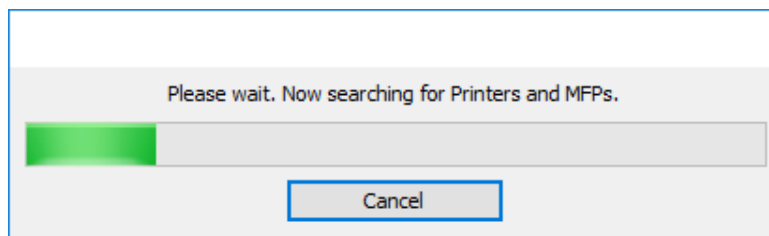
Figure 3.2-1 Software End User License Agreement dialog box

3. Click “Install (Network Search)”.



**Figure 3.2-2 Function Selection dialog box**

4. Starting search devices on the network. Click “Cancel” if you want to stop searching.



**Figure 3.2-3 Searching dialog box**

5. Devices found in the search will be displayed in a list.

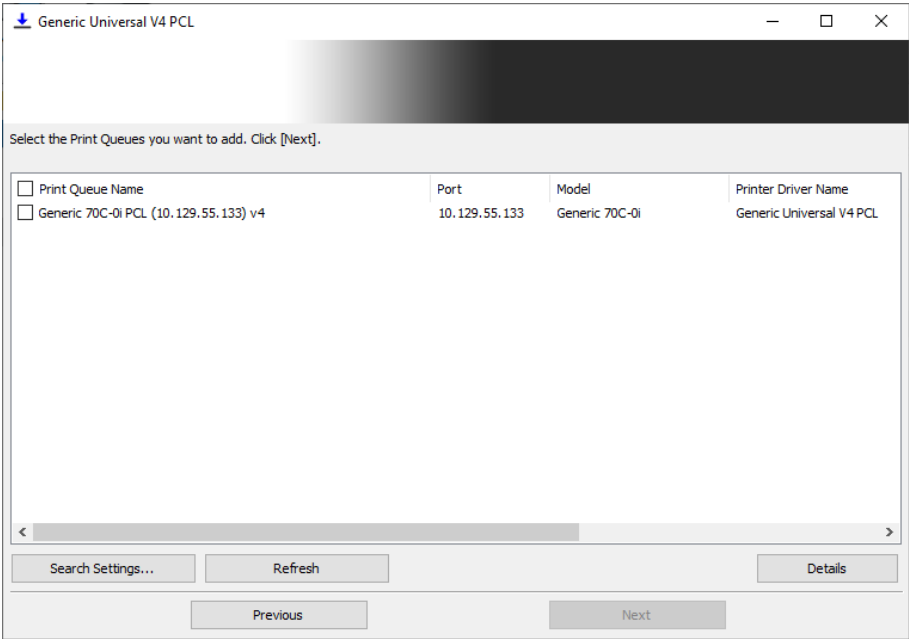


Figure 3.2-4 Device List dialog box

6. Settings such as Print Queue Name and Printer Driver Name will be displayed by clicking “Detail”. Check the device you want to install and click “Next”.

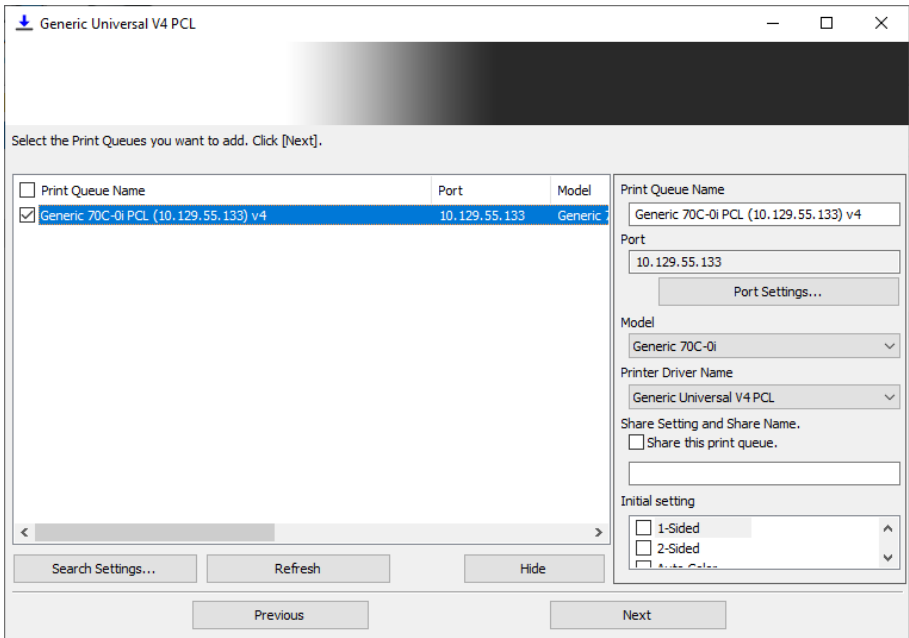
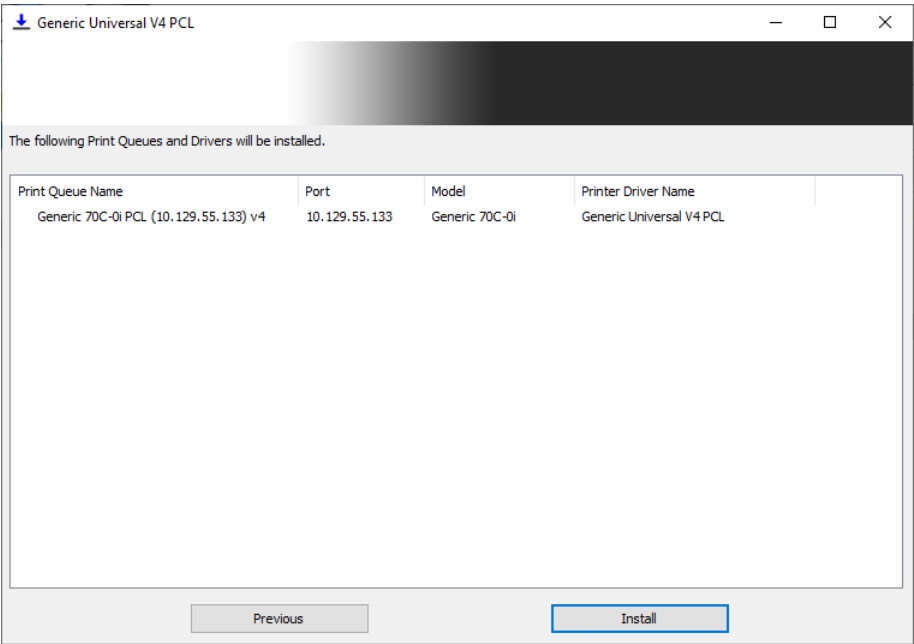


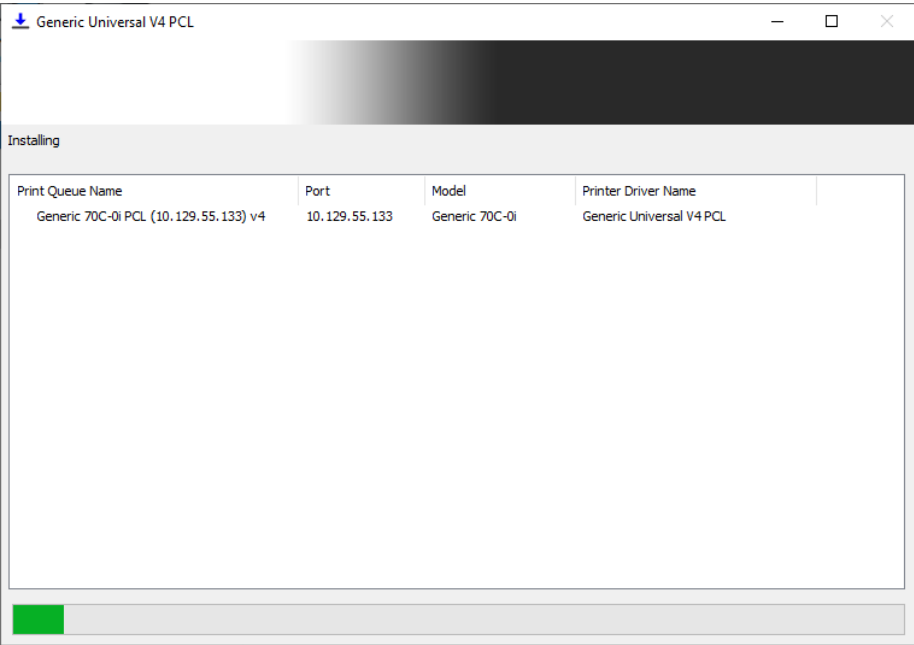
Figure 3.2-5 Device List dialog box (Detail)

7. Installation Confirmation dialog box is displayed. Click “Install” to start installing.



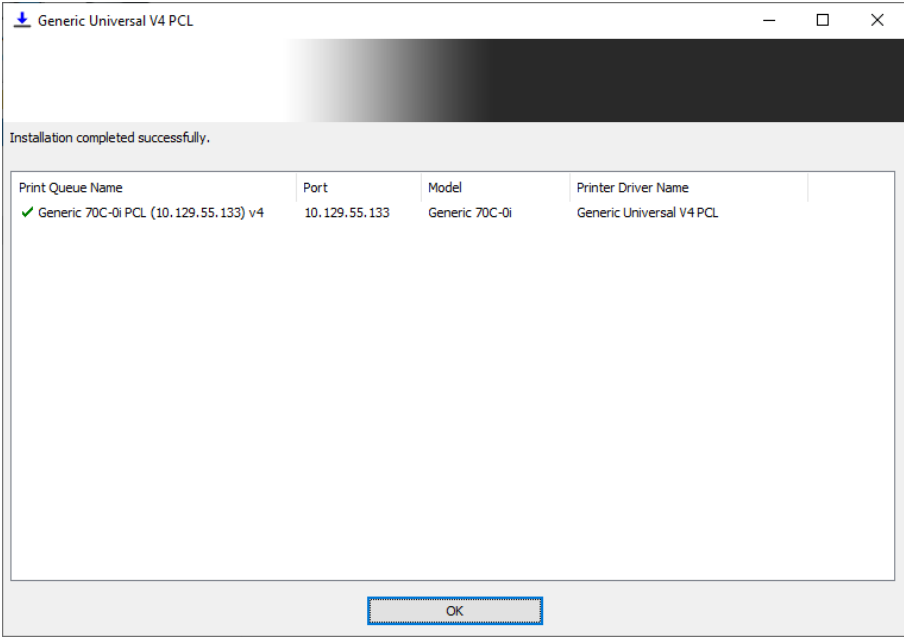
**Figure 3.2-6 Installation Confirmation dialog box**

8. Progress of the installation is displayed.



**Figure 3.2-7 Installation Process dialog box**

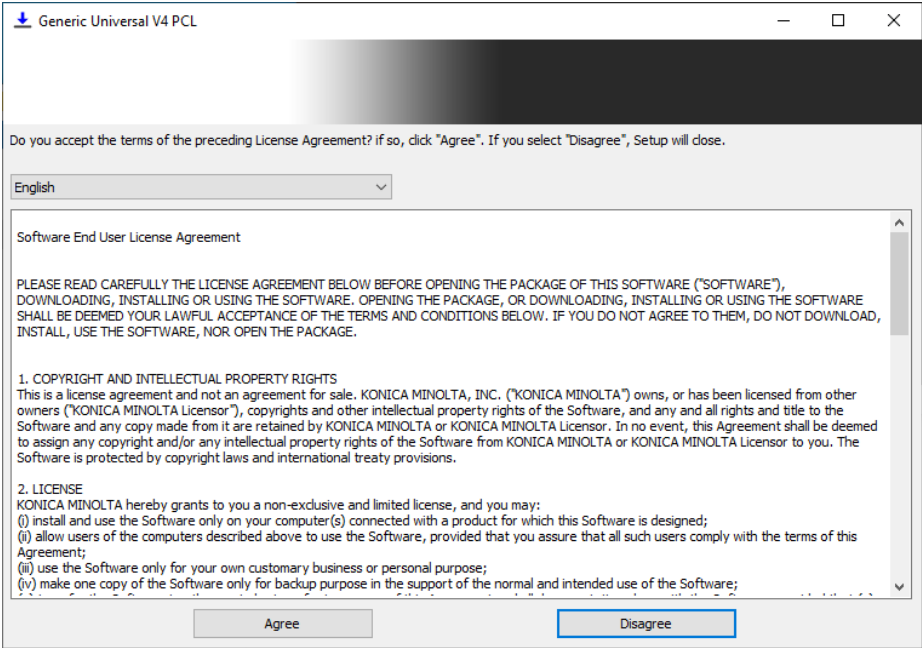
9. The installation is complete.



**Figure 3.2-8 Installation Complete dialog box**

### 3.2.2. Installing in “Network Search” by using the Included Installer

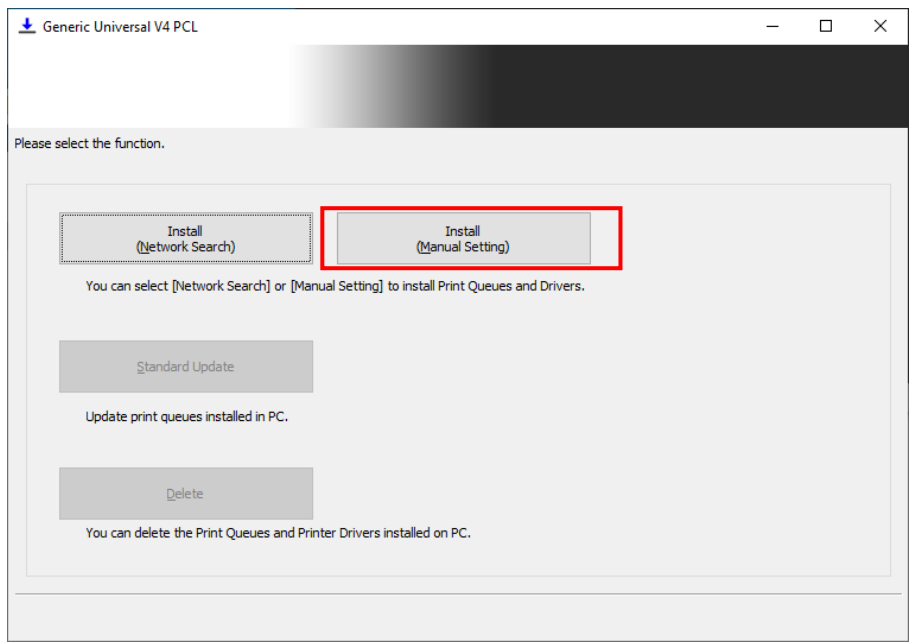
1. Execute “Setup.exe”.
2. Check the Software End User License Agreement, and if there are no problems, click “Agree”.



**Figure 3.2-9 Software End User License Agreement dialog box**

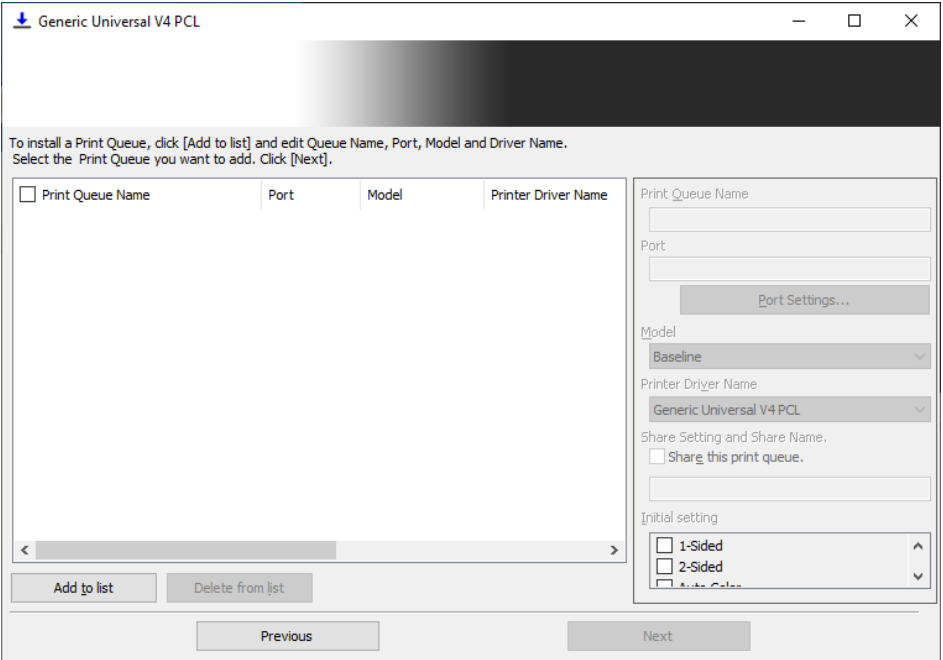


3. Click “Install (Manual Setting)”.



**Figure 3.2-10 Function Selection dialog box**

4. Install (Manual Setting) dialog box is displayed. Click “Add to list” at the bottom left to add a row to the list.



**Figure 3.2-11 Install (Manual Setting) dialog box**

5. Select the added row, and enter information such as Print Queue Name and Port on the right side of the setting dialog box. Make sure that you have checked on the beginning of the row you want to add the print queue and click “Next”.

Generic Universal V4 PCL

To install a Print Queue, click [Add to list] and edit Queue Name, Port, Model and Driver Name.  
Select the Print Queue you want to add. Click [Next].

<input type="checkbox"/> Print Queue Name	Port	Model	Printer Driver Name
<input checked="" type="checkbox"/> Generic Universal V4 PCL	LPT1:	Baseline	Generic Universal V4 P

Print Queue Name  
Generic Universal V4 PCL

Port  
LPT1:  
Port Settings...

Model  
Baseline

Printer Driver Name  
Generic Universal V4 PCL

Share Setting and Share Name.  
☐ Share this print queue.

Initial setting  
☐ 1-Sided  
☐ 2-Sided  
☐ Auto Color

Add to list Delete from list

Previous Next

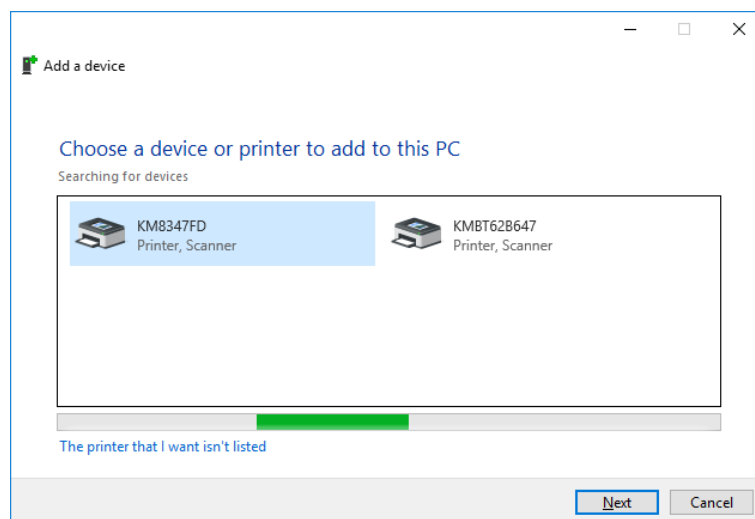
**Figure 3.2-12 Install (Manual Setting) dialog box (continue)**

6. The following procedure is same as procedure 7 and later of **3.2.1 Installing in “Network Search” by using the Included Installer.**

### 3.2.3. Manual Installation

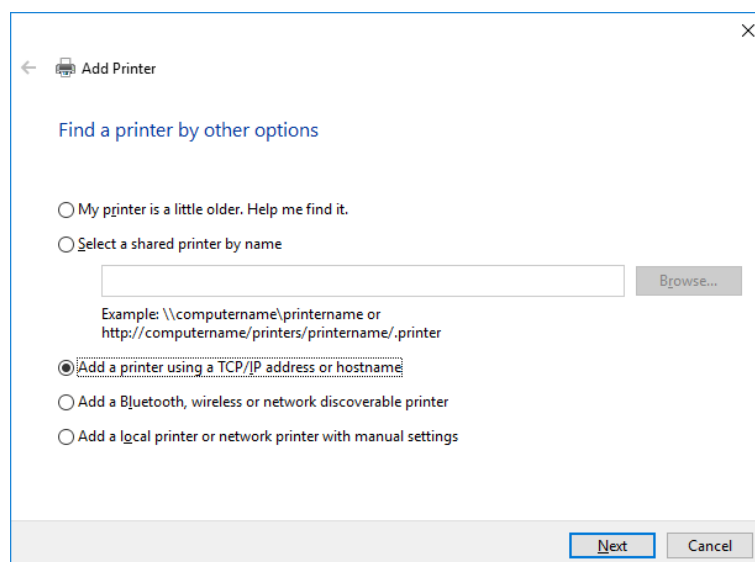
Install the driver using the Windows “Add Printer” wizard.

1. Open the “Devices and Printers” folder and click the “Add a printer” button.
2. The Add Printer wizard starts. Click “The printer that I want isn’t listed”.



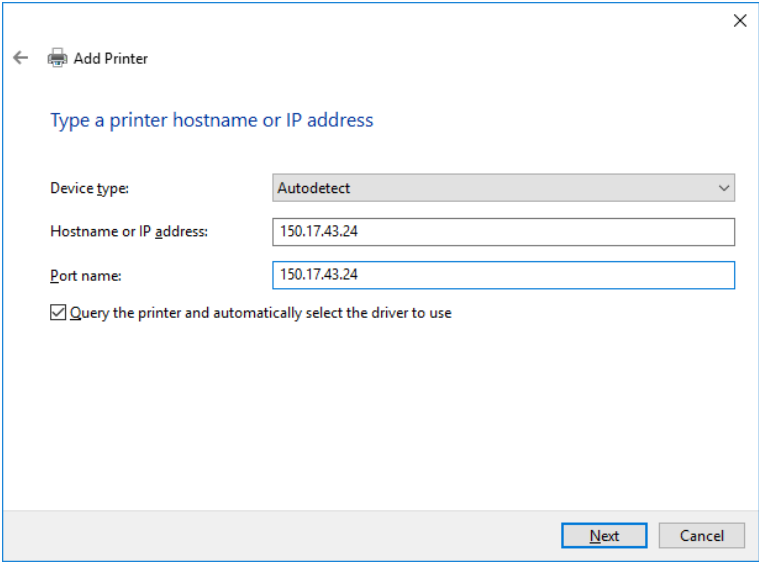
**Figure 3.2-13 Searching for devices**

3. If a port already exists, select “Add a local printer of network printer with manual settings” and then select an existing port. If not, select “Add a printer using a TCP/IP address or hostname” and click “Next”.



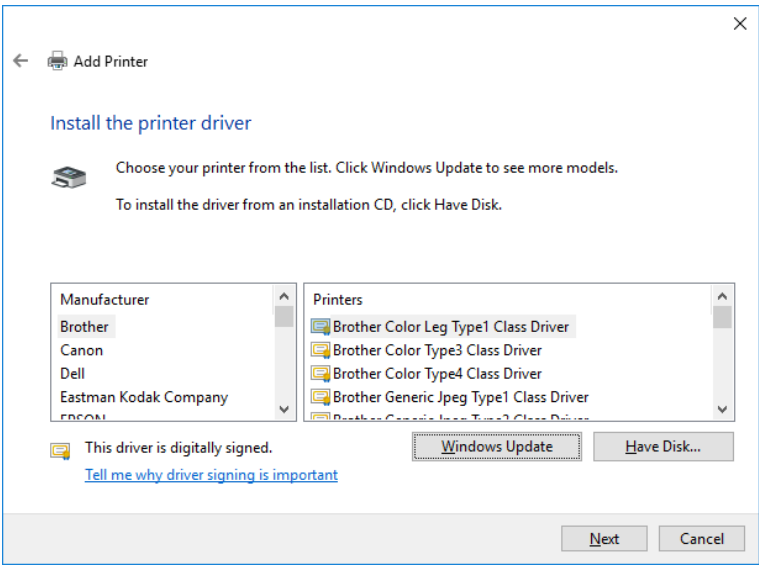
**Figure 3.2-14 Find a printer by other options**

4. Enter IP in the “Host name or IP address” field and press “Next”.



**Figure 3.2-15 Type a printer hostname of IP address**

5. Click “Have Disk”.



**Figure 3.2-16 Printer Driver Selection**

6. Click “Browse”.

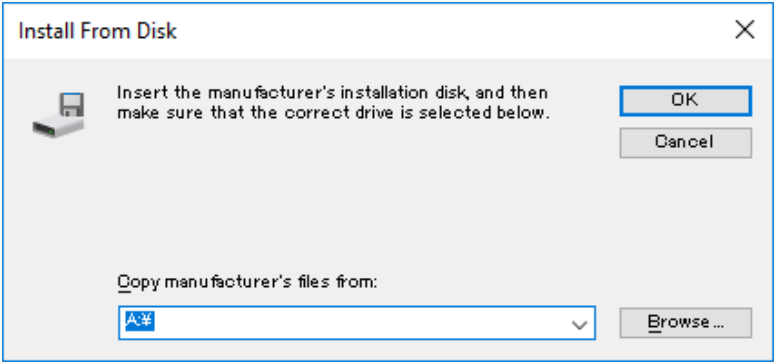


Figure 3.2-17 Install From Disk

7. Access the driver storage location, select “KOBxxKA\_01”, and click “Open”.

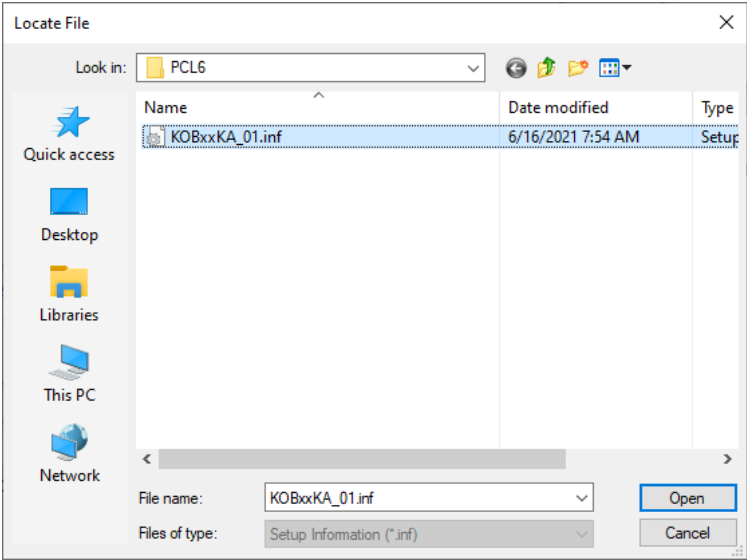


Figure 3.2-18 Locate File

8. Click “OK”.

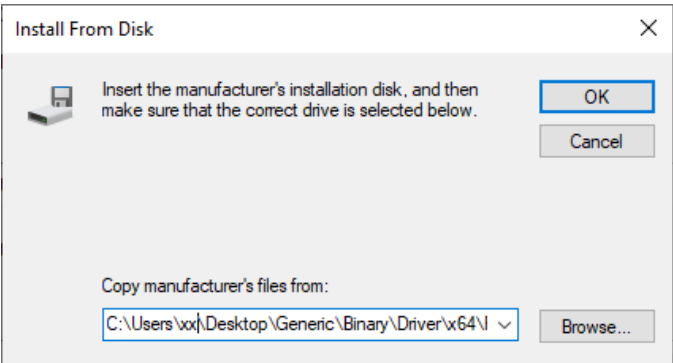
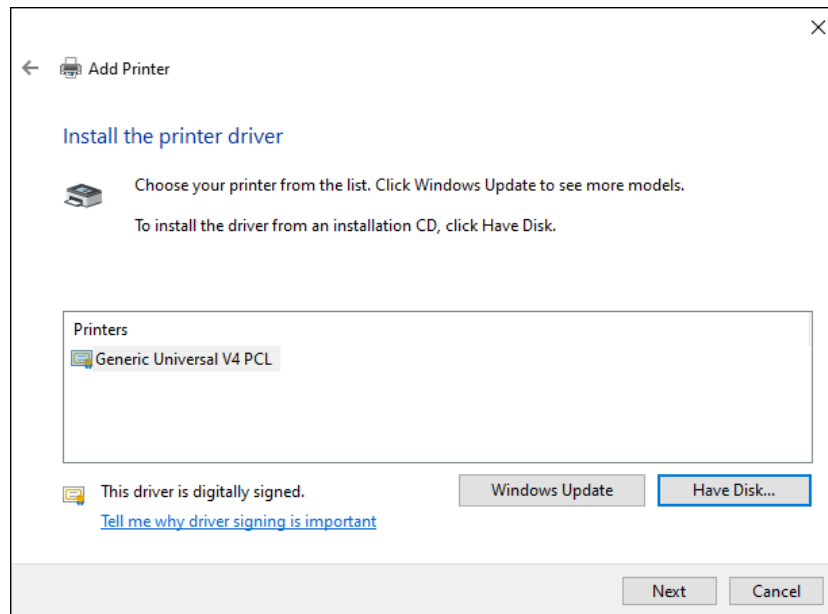


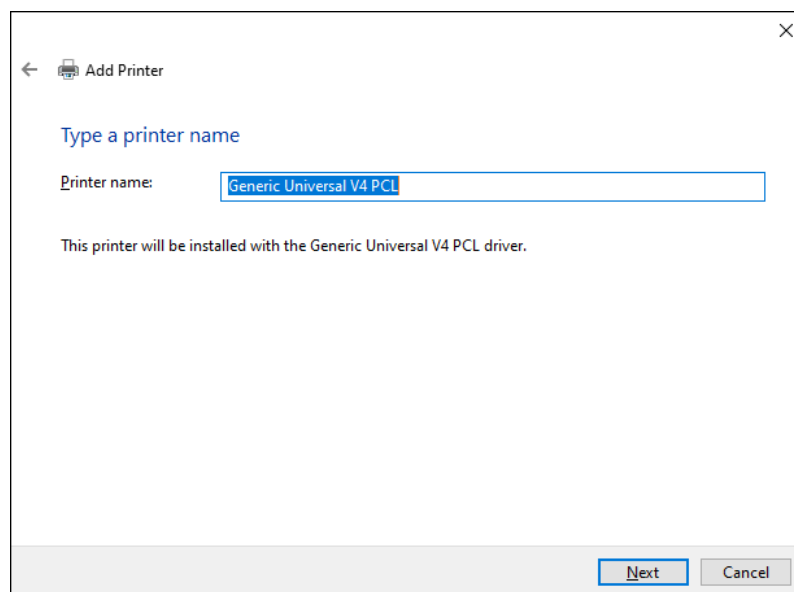
Figure 3.2-19 Install From Disk

9. Confirm that “Generic Universal V4 PCL” is selected and click “Next”.



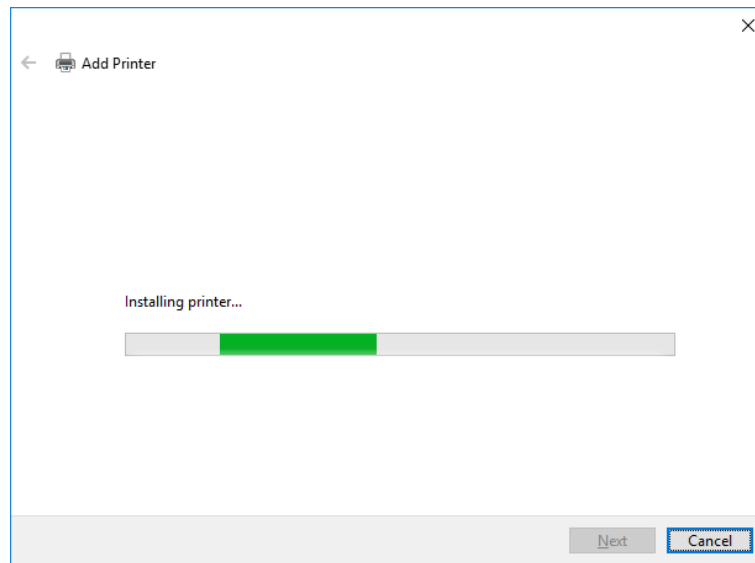
**Figure 3.2-20 Printer Driver Selection**

10. You can rename the printer name. If not, just click “Next”.



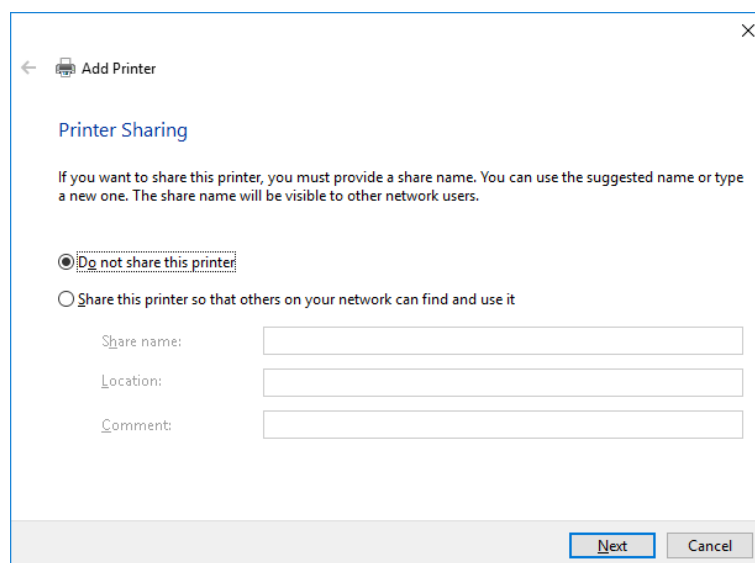
**Figure 3.2-21 Type a printer name**

11. Installing printer.



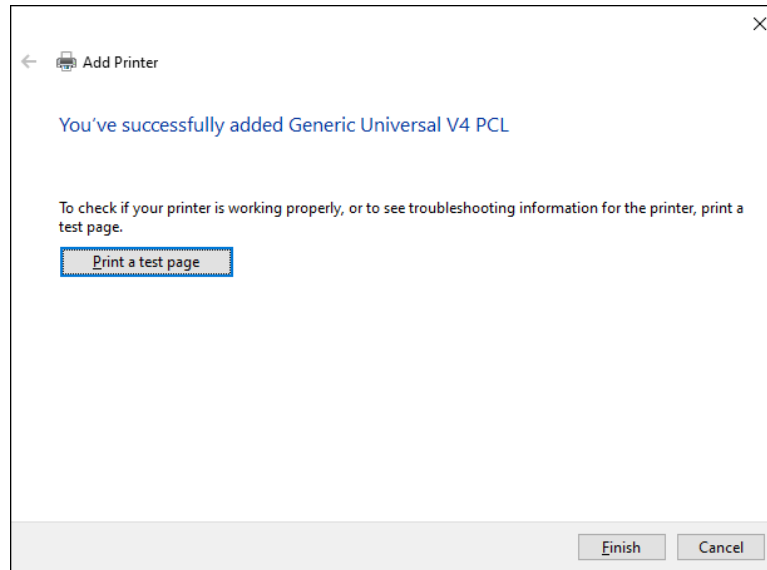
**Figure 3.2-22 Installing printer**

12. The printer sharing setting screen will be displayed. If you want to share it, enter sharing information, if not, select "Do not share this printer" and click "Next".



**Figure 3.2-23 Printer Sharing**

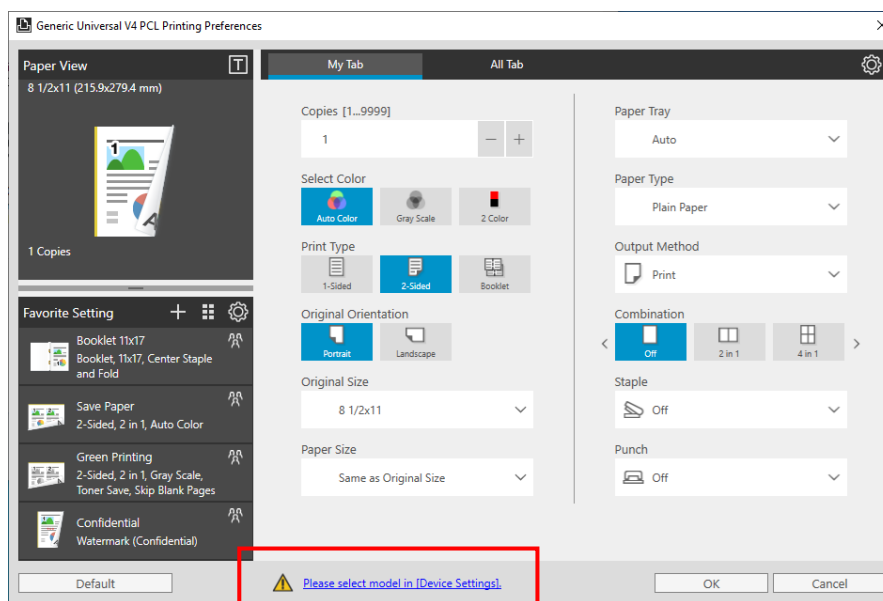
13. The installation is complete. Click “Finish” to close the dialog box.



**Figure 3.2-24 Installation complete**

If you install Generic V4 Universal Print Driver using this method, the model will not be selected automatically. So you also need to do the following procedure to select a model.

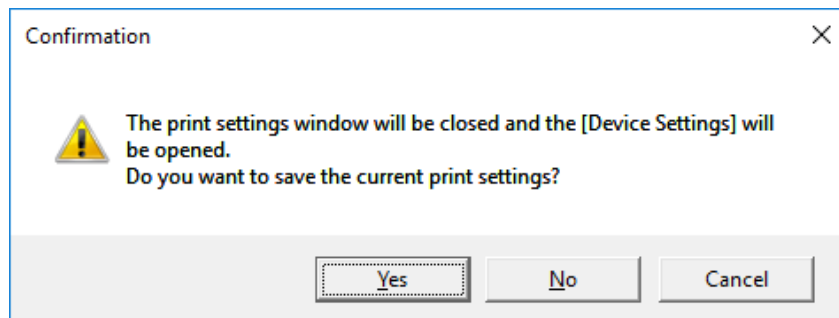
14. Right click the added printer icon from the “Devices and Printers” folder to open the Printing Preferences.
15. Click the following message that displayed on the Printing Preferences.  
“Please select model in [Devices and Printers]”.



**Figure 3.2-25 Printing Preferences**

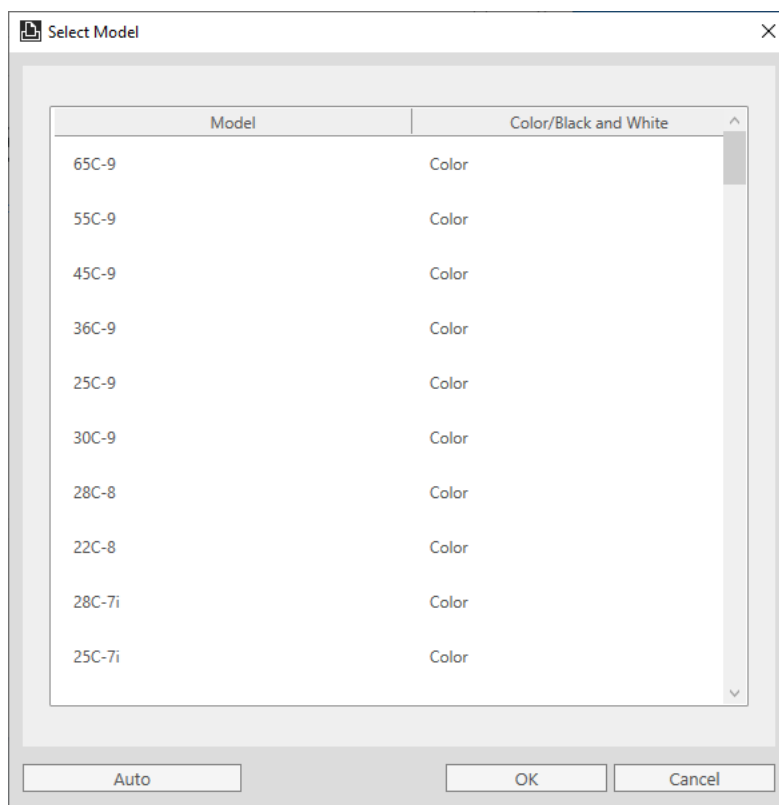


16. The Confirmation dialog box will be displayed. If you want to save the printing settings, click “Yes”. If not, click “No”.



**Figure 3.2-26 Confirmation**

17. Select a model in Model Selection dialog box and Click “OK”. If you want to acquire the model automatically, Click “Auto”.



**Figure 3.2-27 Model Selection**

18. The Device Settings dialog box will be displayed. You can make settings for the device. Otherwise, click “OK” to close it.

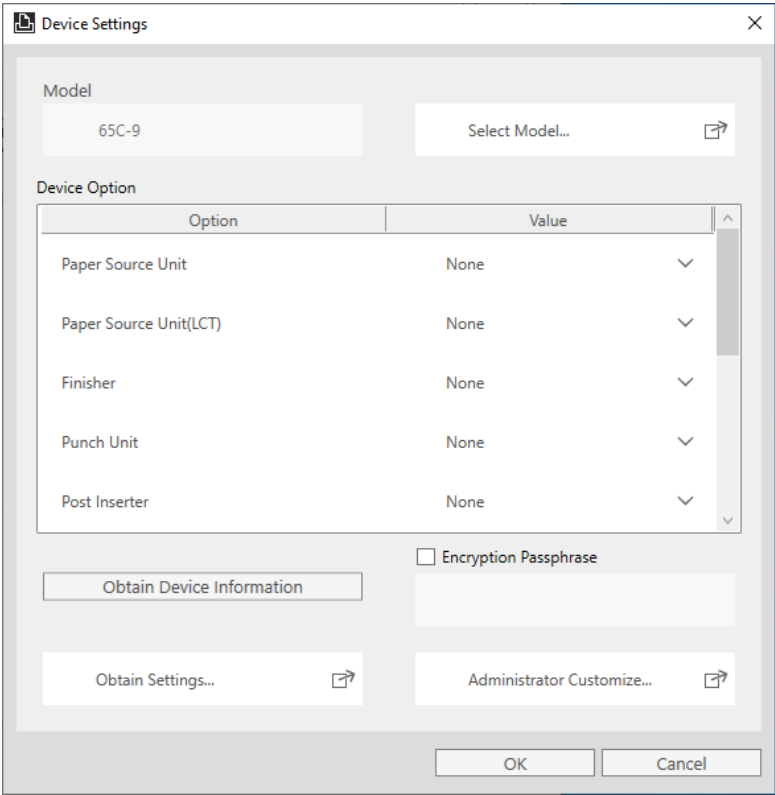


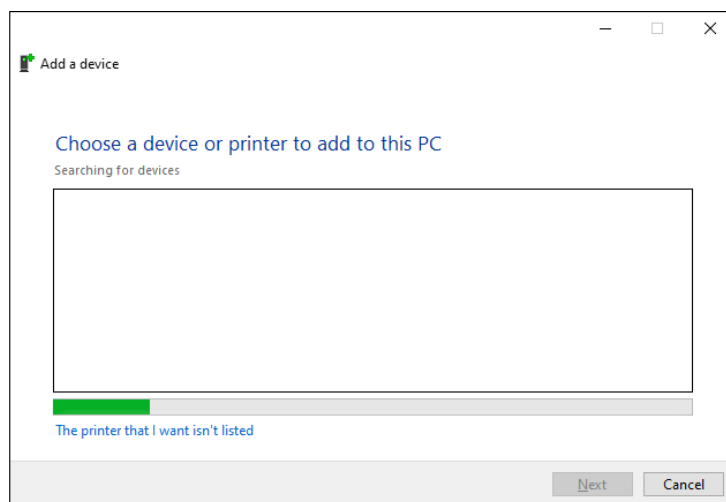
Figure 3.2-28 Device Settings

### 3.2.4. Installation in Point and Print environment

In V4UPD, when installing a shared printer in the Point and Print environment, it is necessary to install the driver on the client PC after installing the shared printer.

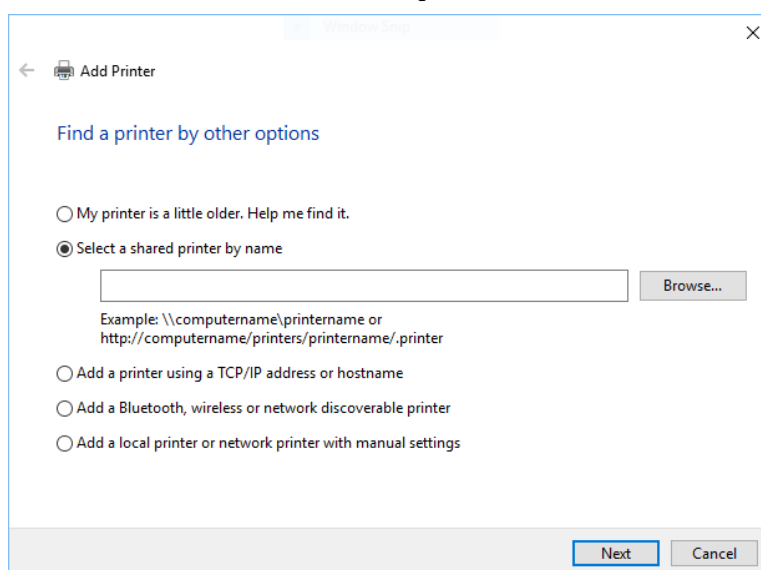
First, install the shared printer.

1. Open the “Devices and Printers” and click the “Add a printer” button.
2. The Add Printer wizard starts. Click “The printer that I want isn’t listed”.



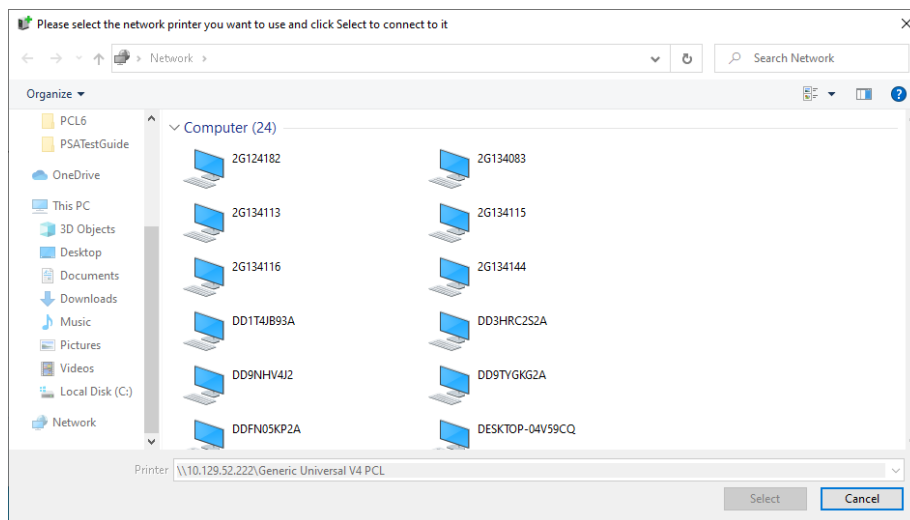
**Figure 3.2-29 Searching for devices**

3. In the “Find a printer by other options” window, select “Select a shared printer by name” radio button and enter the shared printer path. Alternatively, you can also click on [Browse...] button to search the shared printer from the network.



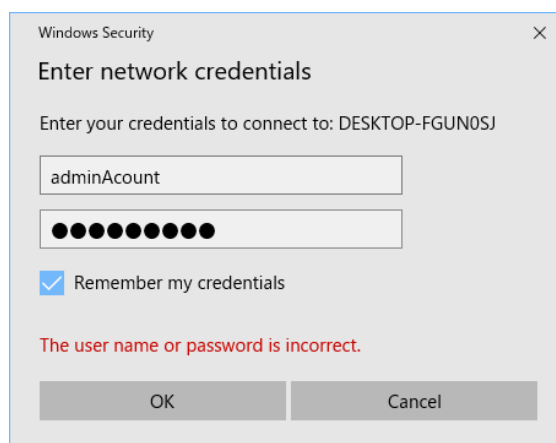
**Figure 3.2-30-1 Find a printer by other options**

4. Clicking on [Browse...] button displays a list of selectable computers. Select the network printer or enter the printer name and click [select].



**Figure 3.2-31-2 Select network Printer**

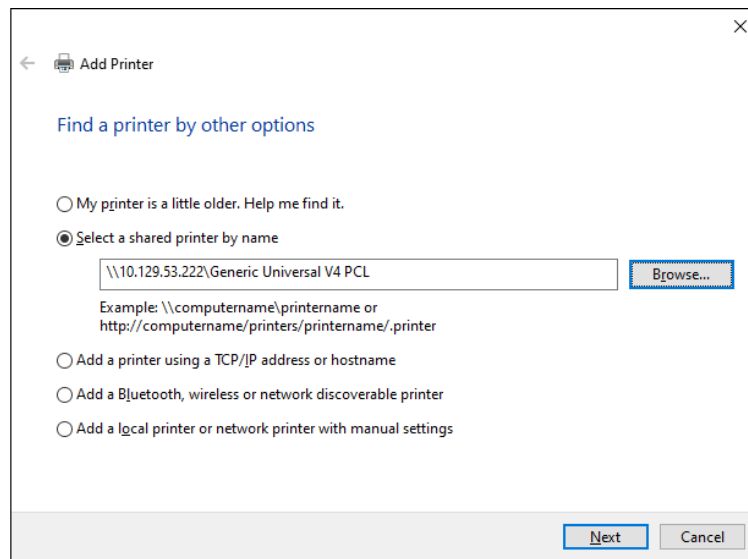
5. If network authentication is required, [Enter network credentials] window is displayed. On this window, enter the administrator account and password. Also make sure to check the "Remember my credentials" checkbox. If the checkbox is not checked, your credentials will not be stored and correct driver installation and operation will not be possible. After entering and checking, click [OK].



**Figure 3.2-32-3 Enter network credentials**

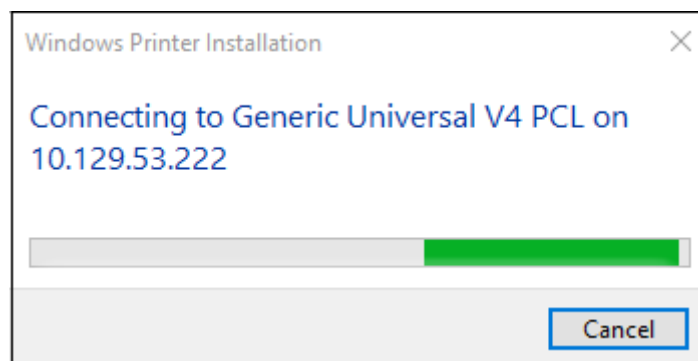
If you click [OK] and continue the installation without checking the "Remember my credentials" checkbox, please remove and reinstall the print queue. Alternatively, use the Credential Manager utility to register the credential information of the server.

6. Return to the “Find a printer by other options” window and click [Next].



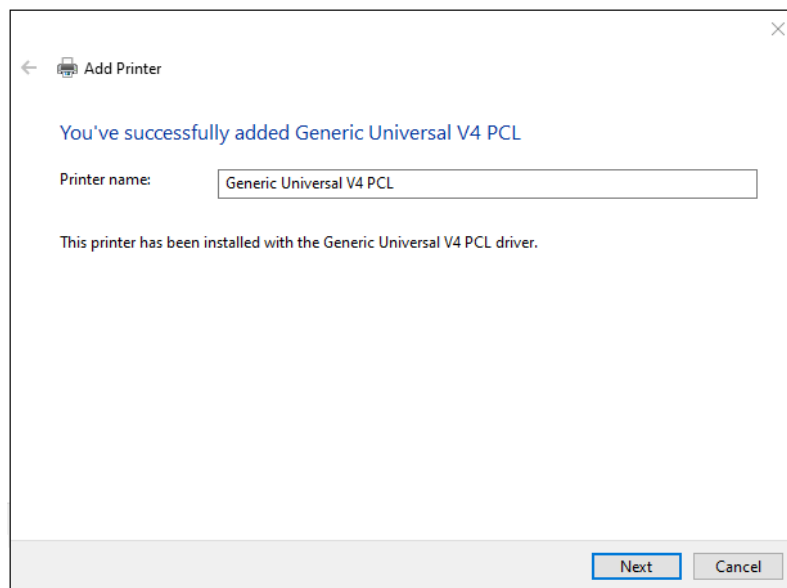
**Figure 3.2-33-4 Find a printer by other options**

7. Connecting to the shared printer.



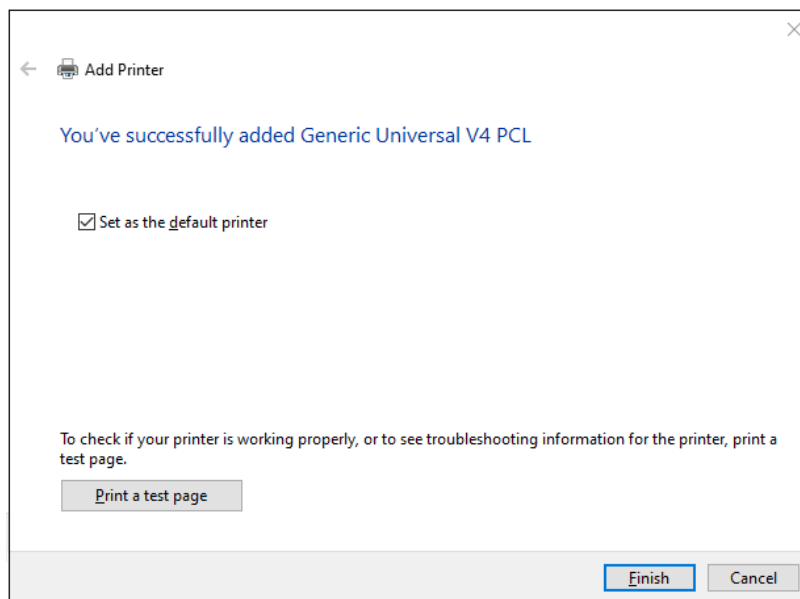
**Figure 3.2-34 Connecting**

8. If added successfully, the following screen is displayed. Click [Next].



**Figure 3.2-35 Added successfully**

9. Click “Finish” to close the dialog box.



**Figure 3.2-36 Finish to install**

Next we will install the driver on the client PC. There are two ways.

### Method1: Installing by using the Included Installer

1. Execute "Setup.exe".
2. Check the Software End User License Agreement, and if there are no problems, click "Agree".

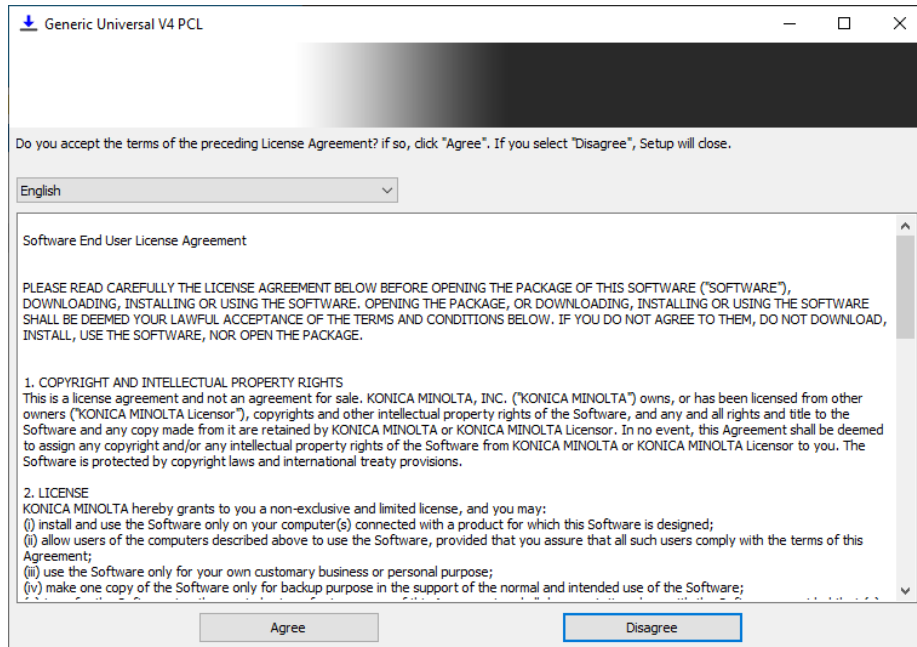


Figure 3.2-37 Software End User License Agreement dialog box

3. Click "Standard Update"

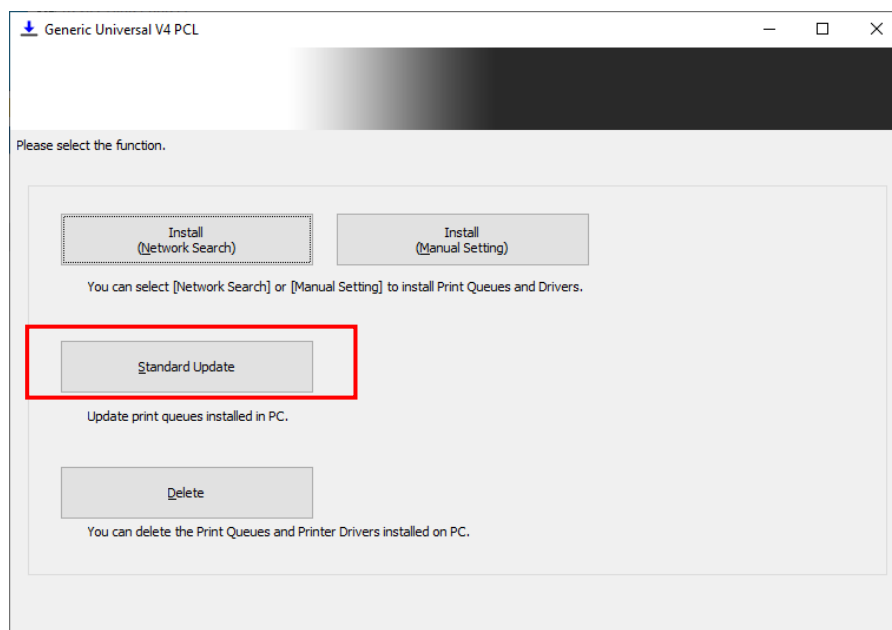
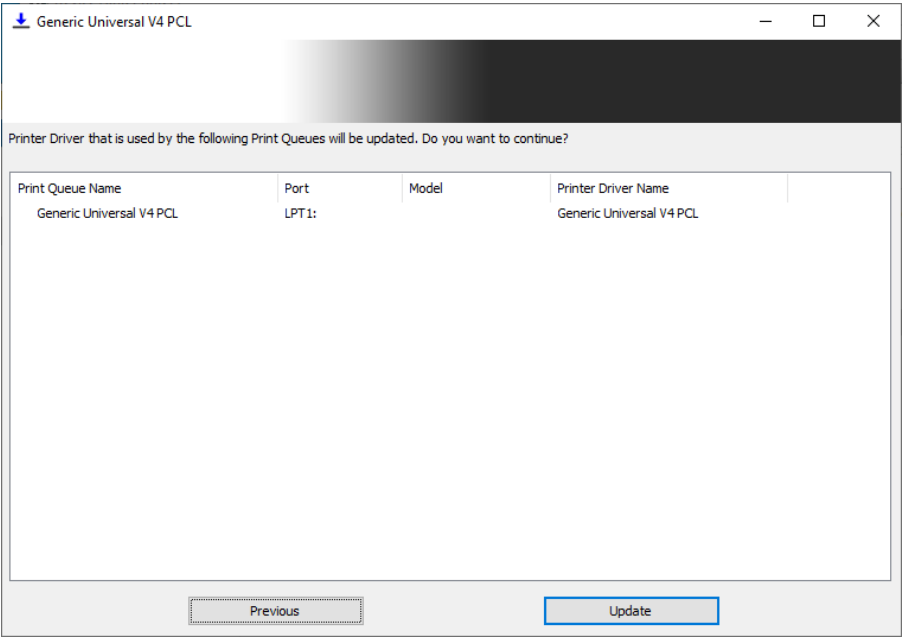


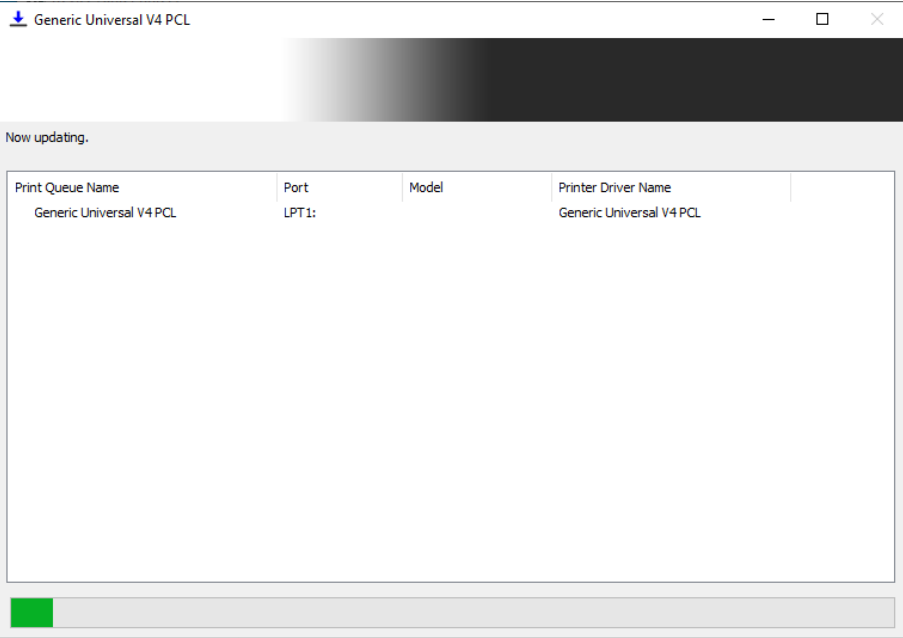
Figure 3.2-38 Function Selection dialog box

4. Confirm the print queue name and click “Update” to install the printer driver.



**Figure 3.2-39 Update Target Confirmation dialog box (continue)**

5. Starting update.



**Figure 3.2-40 Updating Process dialog box**



6. The update is complete. Click “OK” to close the dialog.

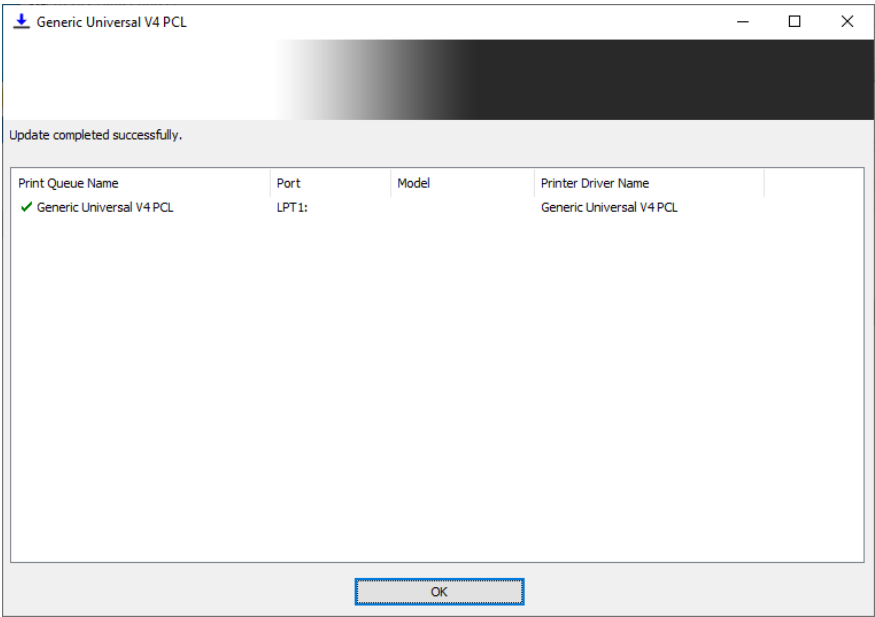


Figure 3.2-41 Update Complete dialog box

**Method2: Manual Installation**

1. Open the “Devices and Printers” folder and click the “Print Server Properties” button. Click the “Add” button in “Drivers” tab of Print Server Properties dialog box.

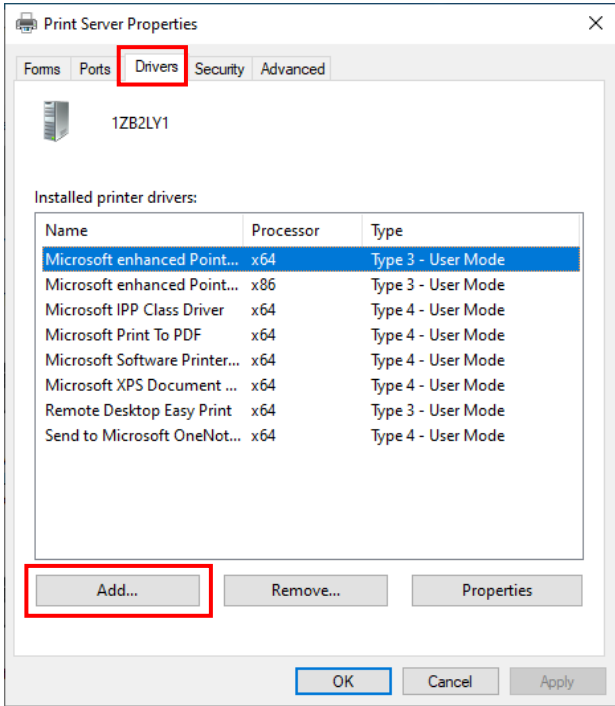


Figure 3.2-42 Print Server Properties

2. Click “Next”.

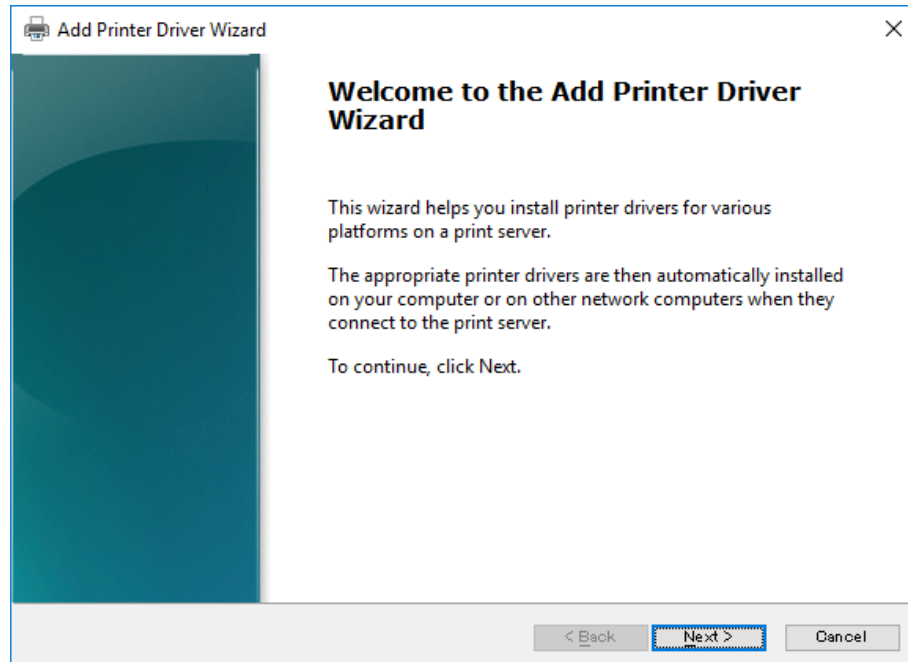


Figure 3.2-43 Add Printer Driver Wizard

3. Select the Processor and click “Next”.

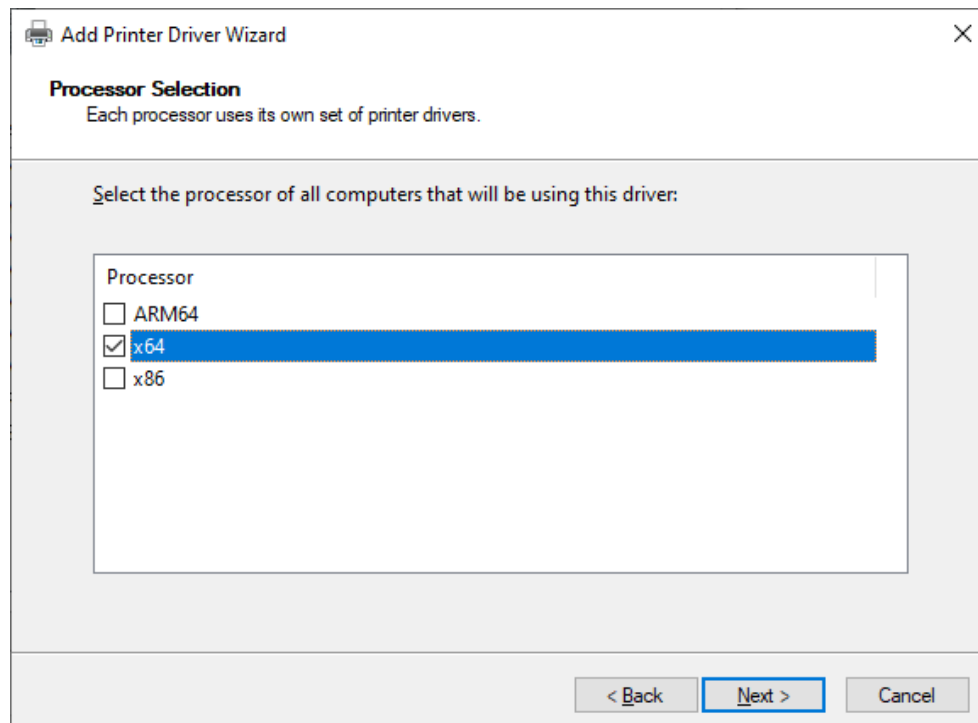


Figure 3.2-44 Processor Selection

4. Click “Have Disk”.

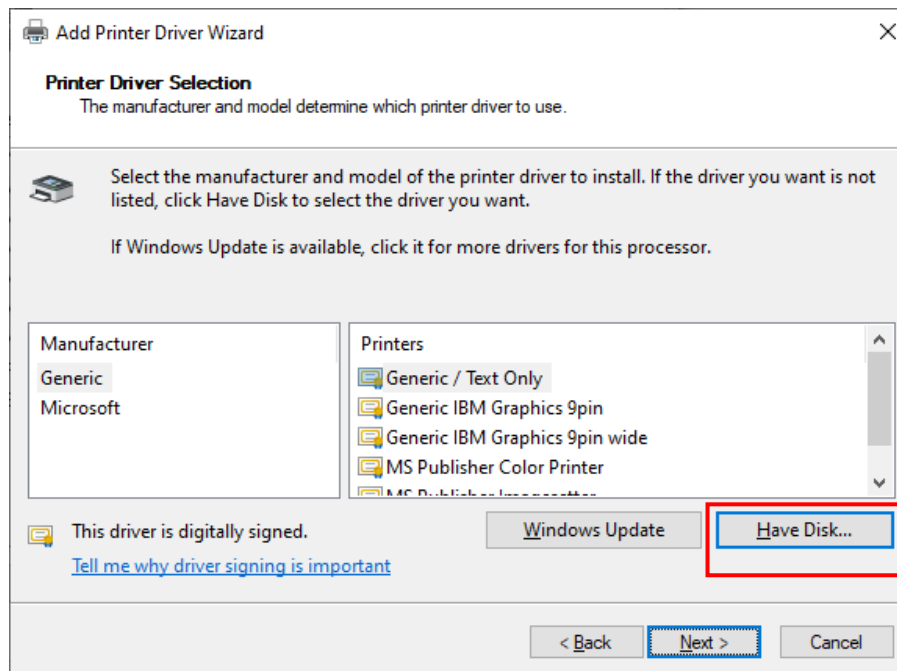


Figure 3.2-45 Printer Driver Selection

5. Click “Browse”.

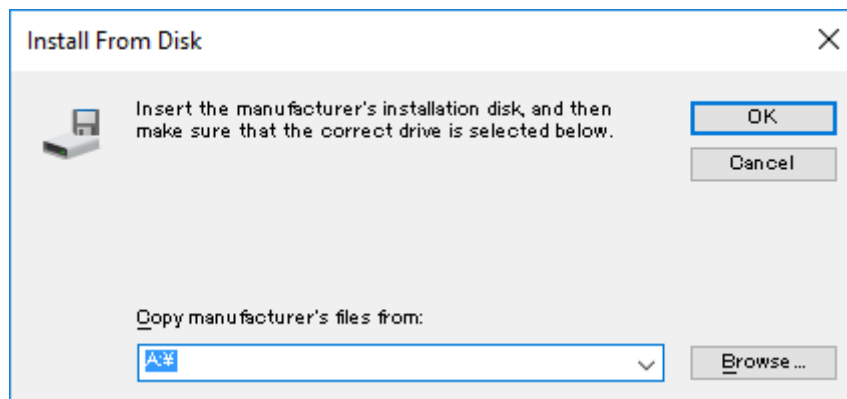
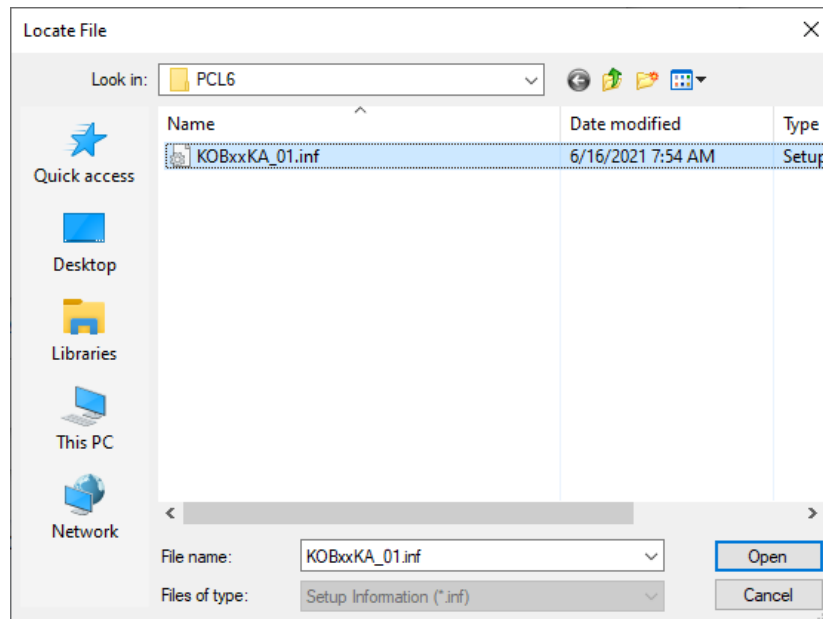


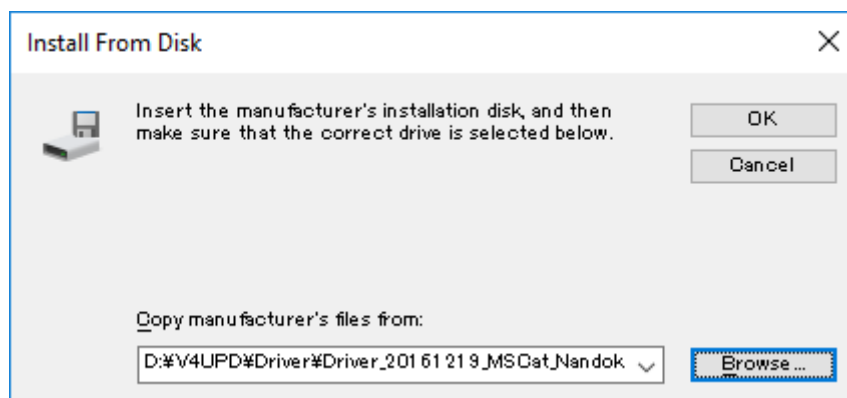
Figure 3.2-46 Install From Disk

6. Access the driver storage location, select “KOBxxKA\_01”, and click “Open”.



**Figure 3.2-47 Locate File**

7. Click “OK”.



**Figure 3.2-48 Install From Disk**

8. Confirm that “Generic Universal V4 PCL” is selected and click “Next”.

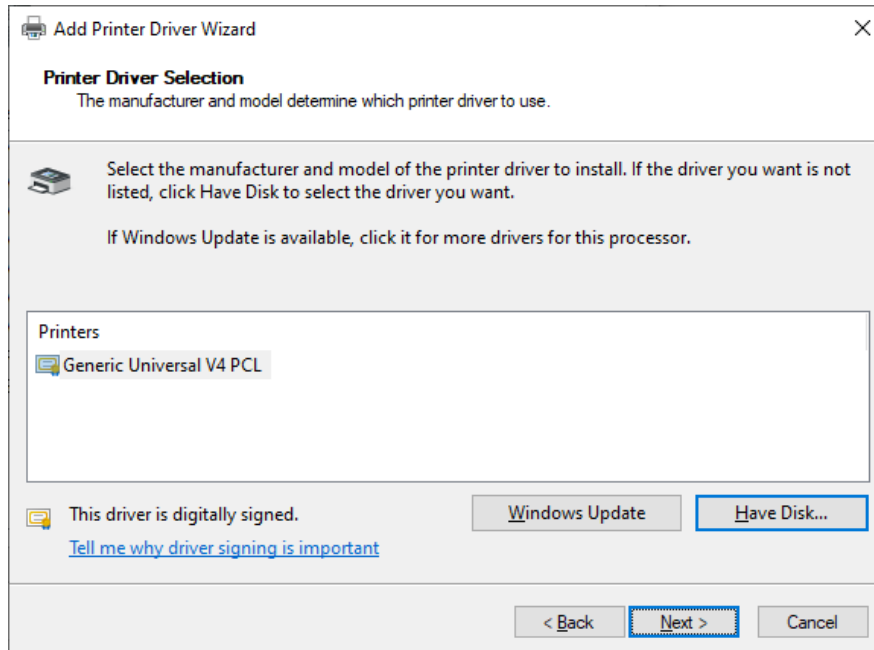


Figure 3.2-49 Printer Driver Selection

9. The installation is complete. Click “Finish” to close the dialog box.

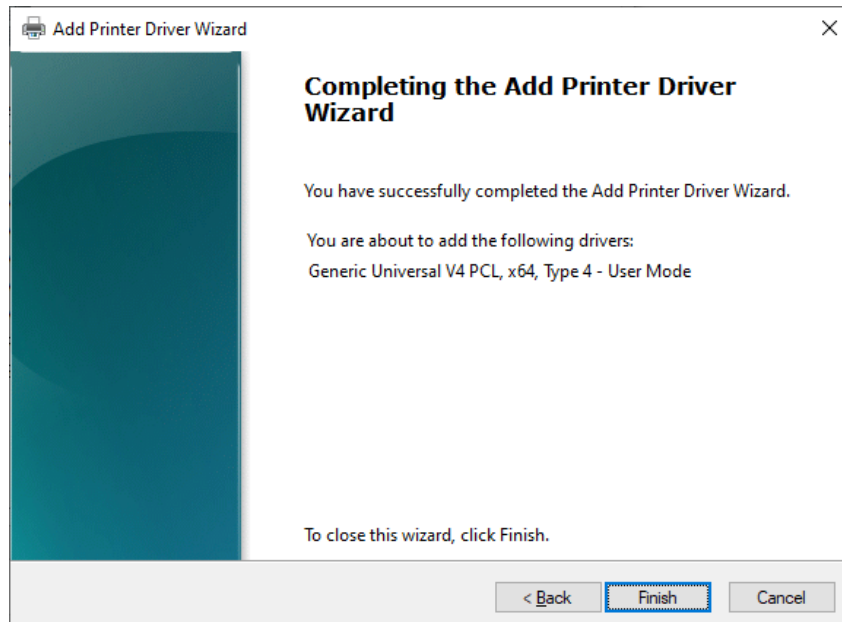
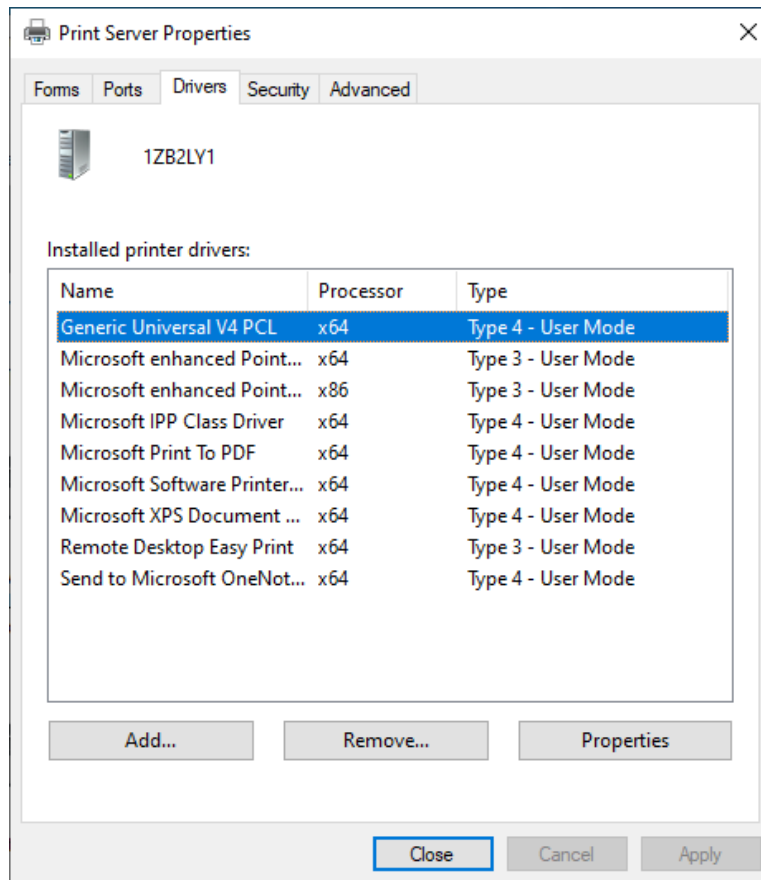


Figure 3.2-50 Add Complete

10. Click “OK” to close the Print Server Properties dialog box.



**Figure 3.2-51 Print Server Properties**

### 3.3. Uninstallation

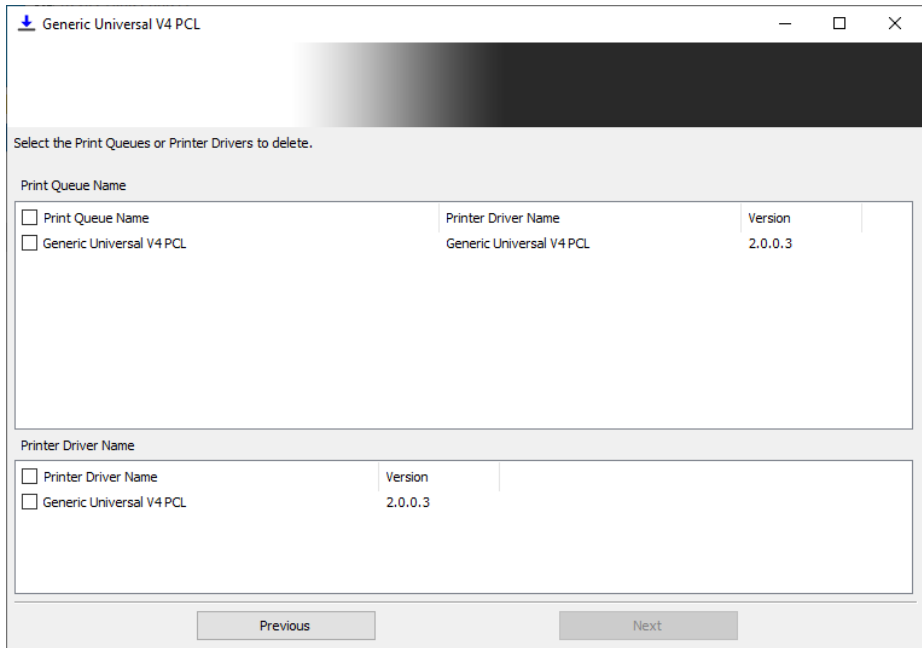
#### 3.3.1. If You Installed the Software Using the Included Installer

If you have installed UPD using the included installer, then the uninstaller is also installed on your operating system. Use that to uninstall the software.

1. Use the following method to start uninstaller.

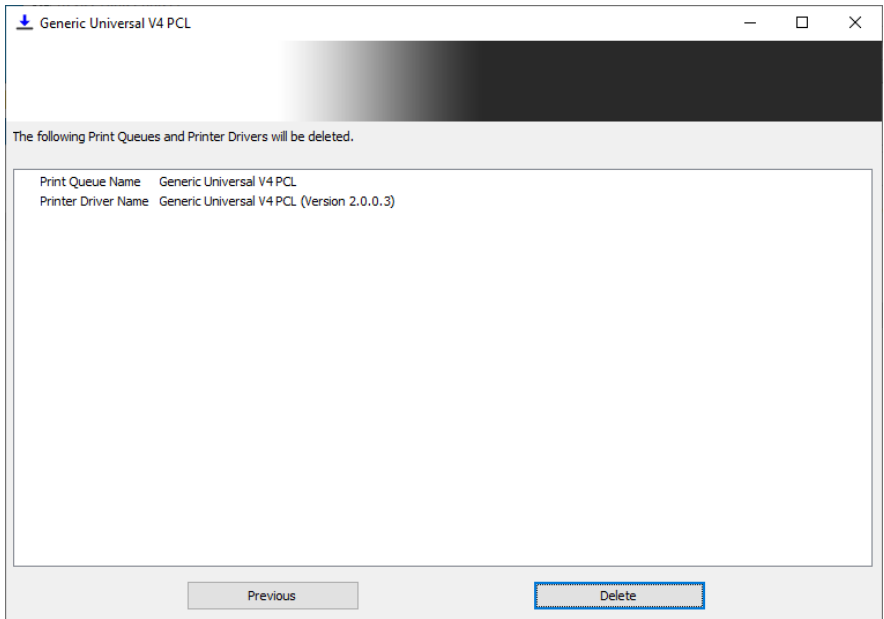
Select “Control Panel” -> “Programs and Features” and double click “Generic Universal V4 PCL”.

2. Print Queue and Printer Driver, which can be deleted will be displayed. Check on what you want to delete and click “Next”.



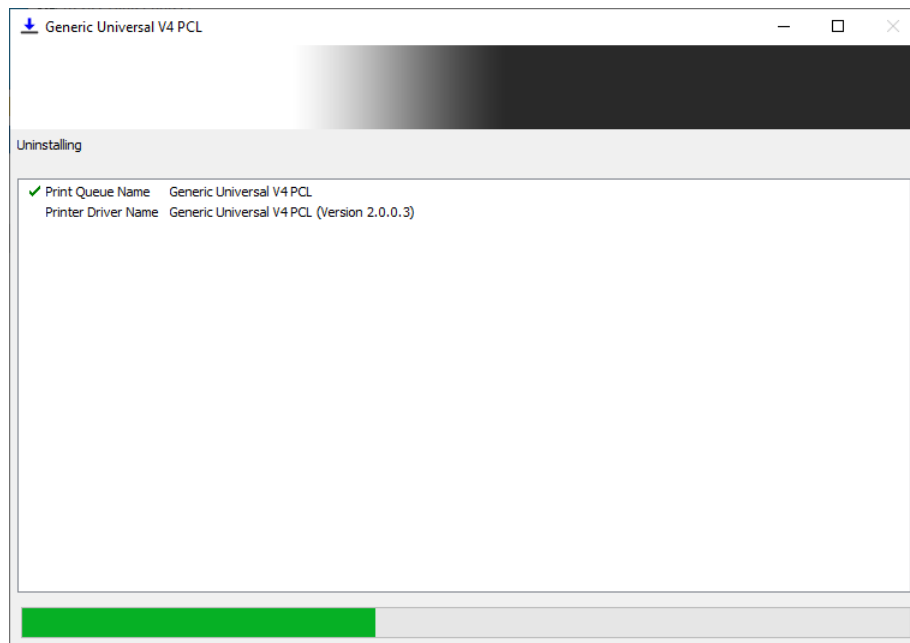
**Figure 3.3-1 Uninstall target selection dialog box**

3. If you selected to delete Printer Driver, all Print Queues that use the Printer Driver will be deleted.
4. The confirmation dialog of uninstallation will be displayed.



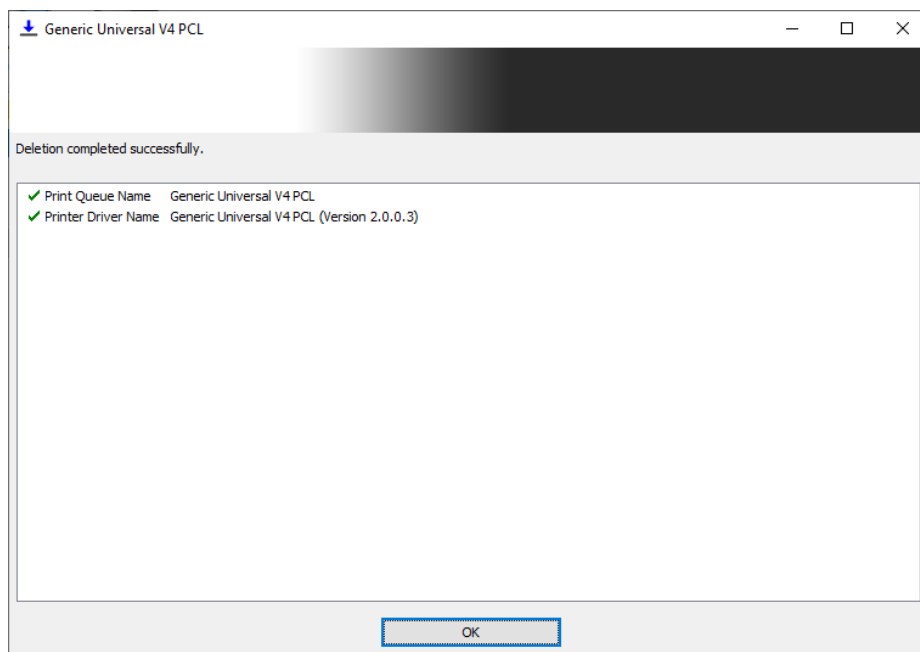
**Figure 3.3-2 Uninstallation Details Confirmation dialog box**

5. Progress of the Uninstallation will be displayed.



**Figure 3.3-3 Uninstalling dialog box**

6. The uninstallation is complete.



**Figure 3.3-4 Uninstallation Complete dialog box**



### 3.3.2. Manual Uninstallation

If you installed UPD manually, you must uninstall it manually by following the procedure below.

1. Delete all print queues using the driver of “Generic Universal V4 PCL” from the “Devices and Printers” folder.
2. Delete “Generic Universal V4 PCL” from the “Drivers” tab of the “Print Server Properties” dialog box.

### 3.3.3. Uninstallation in Point and Print environment

When using Point and Print, the driver needs to be removed also from the client side. Follow the steps below to remove the driver.

1. Open the “Devices and Printers” folder on client PC.
2. Delete the print queue of the shared V4 UPD.
3. Delete “Generic Universal V4 PCL” from the “Drivers” tab of the “Print Server Properties” dialog box.

# 4. V4 Universal Print Driver's UI

## 4.1. Printing Preferences UI

Generic V4 Universal Print Driver has a new UI that supports touch operation.

### Printing Preferences

The Printing Preferences consists of the following areas.

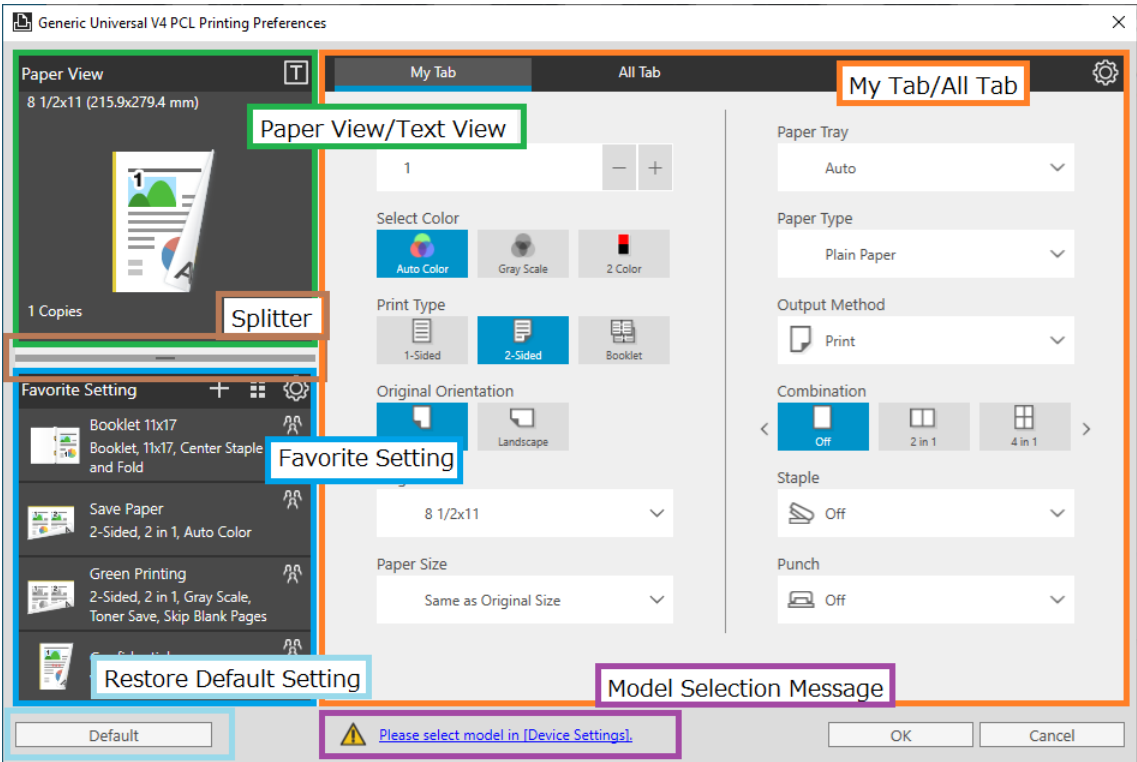


Figure 4.1-1 Printing Preferences – My Tab

The descriptions of each area are described below.

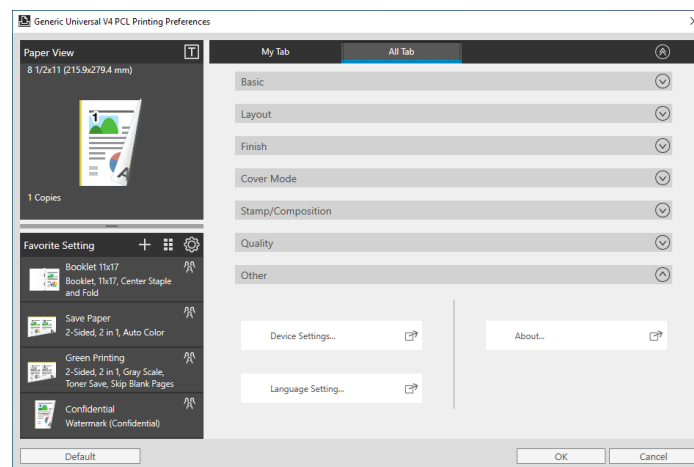
Area	Description
Paper View / Text View	You can switch to two screens: “Paper View” and “Text View”.
Favorite Setting	It is the same function as the conventional favorite setting.
My Tab / All Tab	<ul style="list-style-type: none"> <li>• You can switch to two screens: “My Tab” and “All Tab”.</li> <li>• ”My Tab” is the same function as the conventional My Tab.</li> <li>• On the "All Tab" screen, you can set all print settings.</li> </ul>
Splitter	You can adjust the height of “Paper View / Text View” and “Favorite Setting”.
Restore Default Setting	Change all settings except the following items to default values. <ul style="list-style-type: none"> <li>• Settings of child dialog.</li> <li>• Items and layout of Favorite Settings.</li> <li>• Items and layout of My Tab.</li> </ul>
Model Selection Message	<ul style="list-style-type: none"> <li>• A warning message will be displayed if the model is not selected or if the selected model is incorrect.</li> <li>• The Model Selection Dialog Box will be displayed if click the message.</li> </ul>

**Table 4-1 Descriptions of the Printing Preferences**

The following screen will be displayed by clicking “All Tab”.

In “All Tab”, it is grouped into "Basic", "Layout", "Finish", "Cover Mode ", "Stamp/Composition", and “Quality" and folded.

By clicking each group name, the setting value will be displayed.



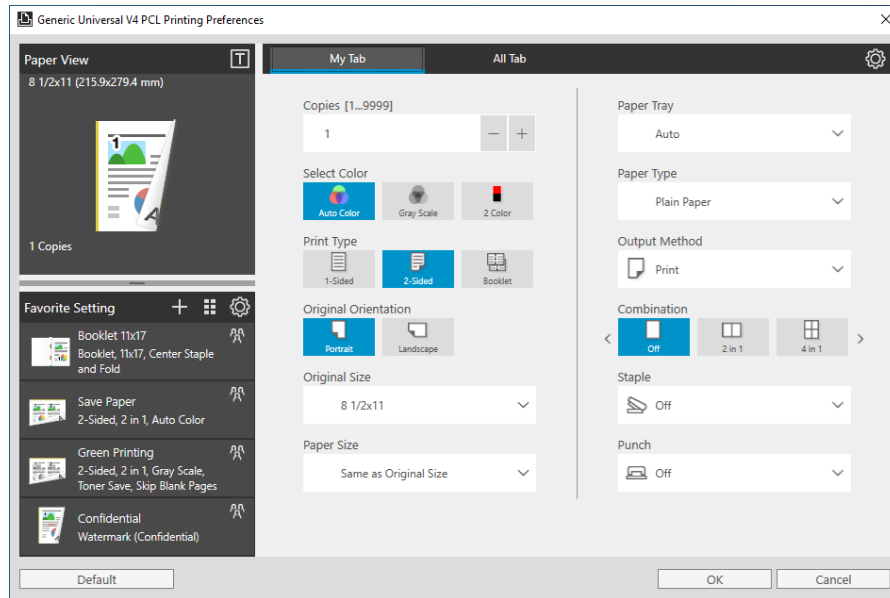
**Figure 4.1-2 Printing Preferences – All Tab**

## 4.2. Device Settings UI

You can select model and make settings for device in Generic V4 Universal Print Driver.

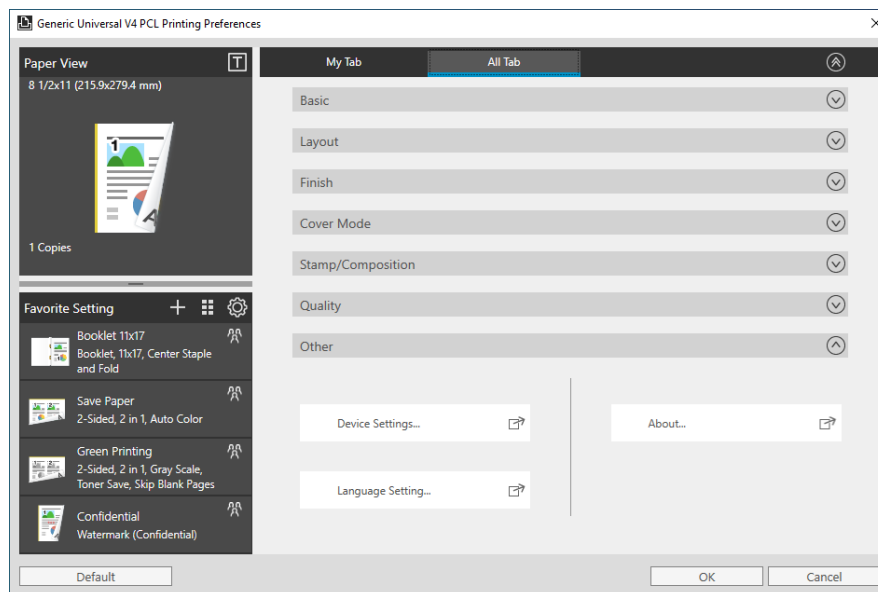
Open the Device Settings dialog box from the Printing Preferences by the following procedures.

1. Open the Printing Preferences.
2. Click “All Tab”.



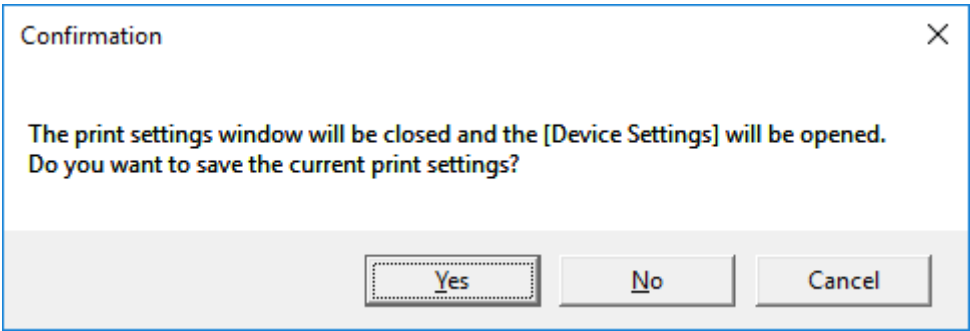
**Figure 4.2-1 Printing Preferences – My Tab**

3. Click “Device Settings” button in the “Other” group.



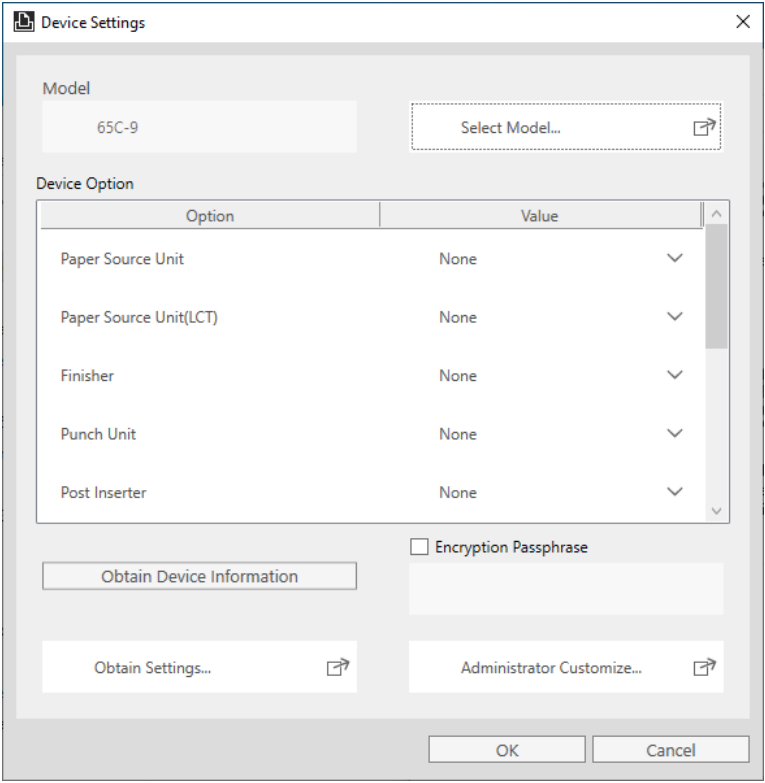
**Figure 4.2-2 Printing Preferences – All Tab**

4. Confirmation dialog box will be displayed. Select “Yes” to save the current print settings, or “No” if you do not want to save them.



**Figure 4.2-3 Confirmation**

5. Device Settings dialog box is displayed.



**Figure 4.2-4 Device Settings**

The descriptions of the settings in Device Settings are described below.

Parameter	Description
Model	Display the model name selected.
Select Model	Pop up the Model Selection dialog box.
Device Option	Displayed the information of device options.
Option	Display the options that can be set.
Value	Display the set value of each option.
Obtain Device Information	Obtain information from the device and apply it to “Device Option” and “Encryption Passphrase”.
Encryption Passphrase	Specify whether to set a user-defined encryption Passphrase.
Obtain Settings	Pop up the Obtain Settings dialog box.
Administrator Customize	Pop up the Admin Configuration dialog box.

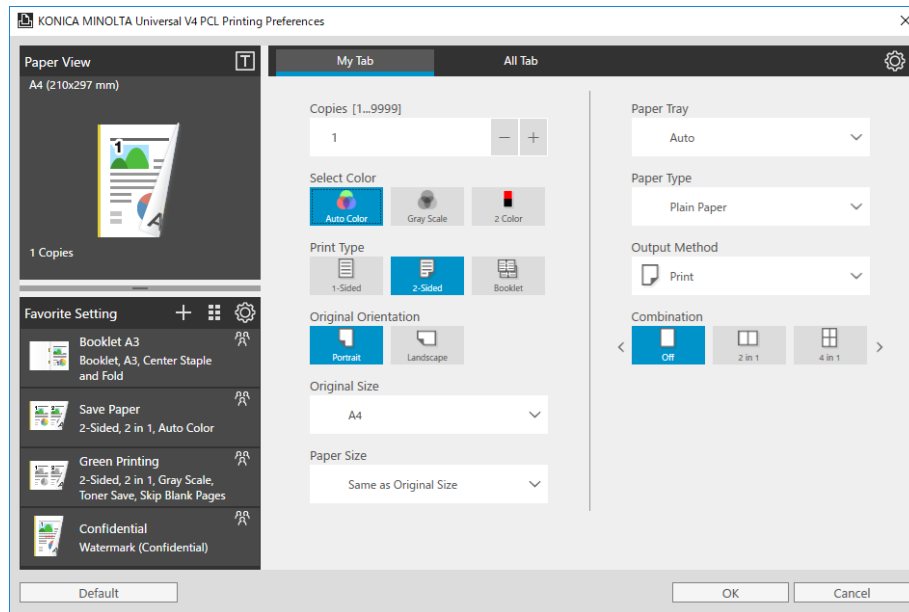
**Table 4-2 Descriptions of the Device Settings dialog box**

## 5. Using V4 Universal Print Driver

### 5.1. Changing the model

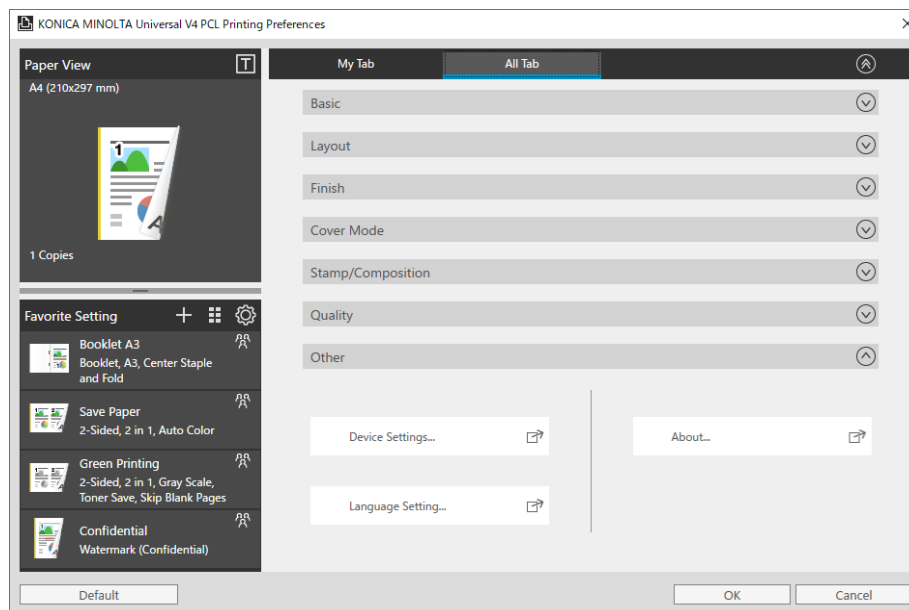
In Generic V4 Universal Print Driver, you can change the model to be used from the driver UI.

1. Open the Printing Preferences.



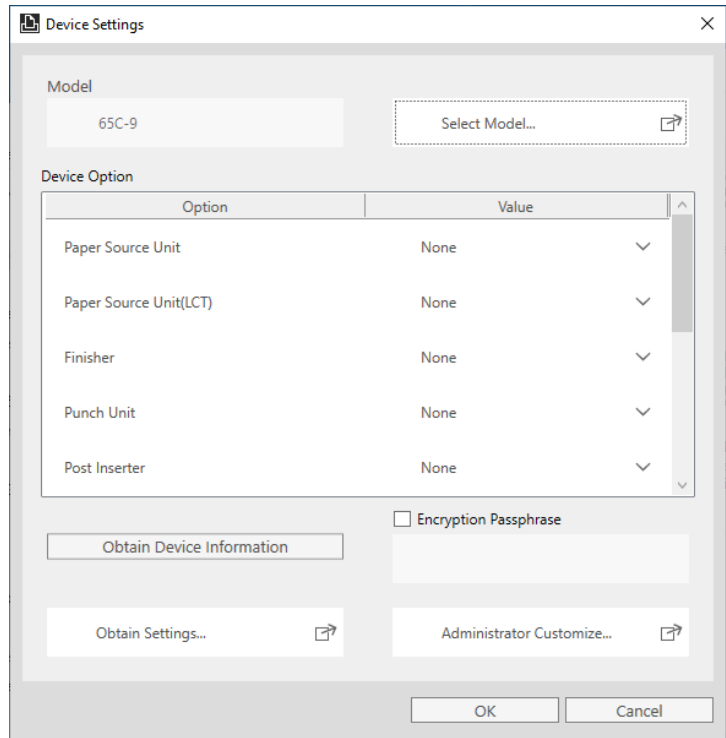
**Figure 5.1-1 Printing Preferences – My Tab**

2. Click “Device Settings” button in the “Other” group of the “All Tab”.



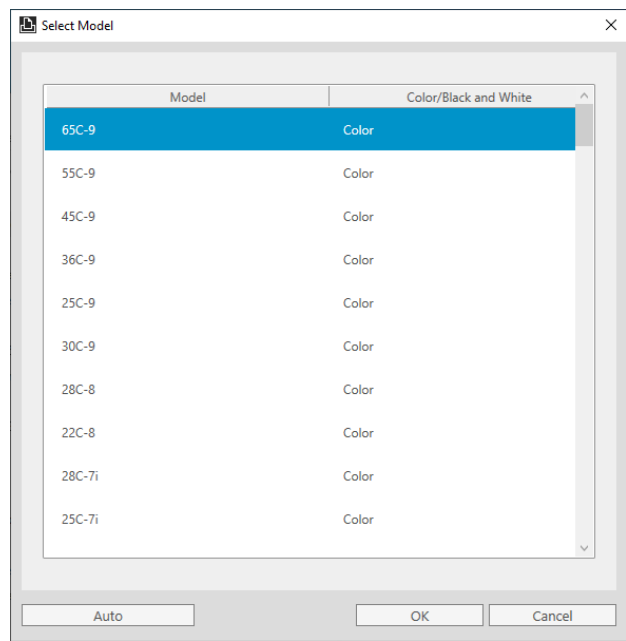
**Figure 5.1-2 Printing Preferences – All Tab**

3. Click the “Select Model” button in Device Settings dialog box.



**Figure 5.1-3 Device Settings dialog box**

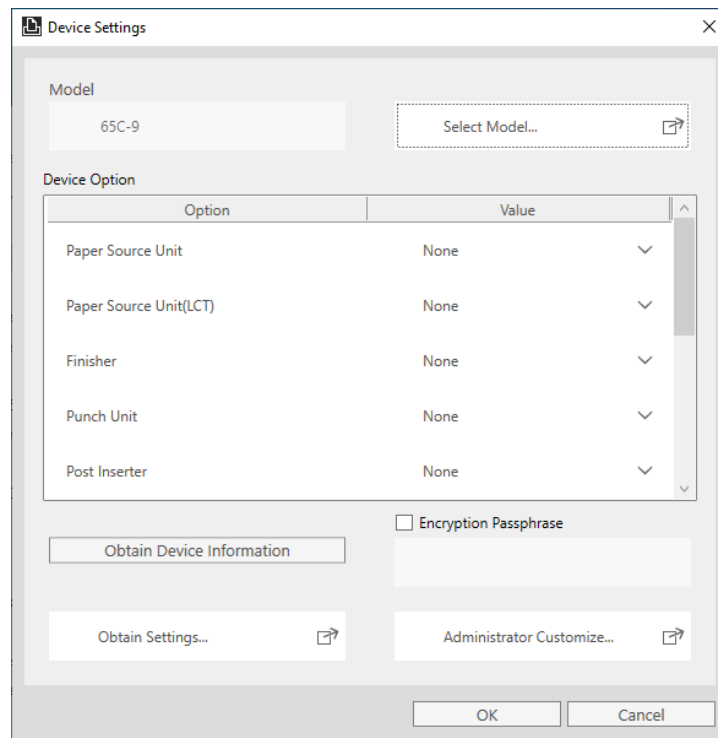
4. Select a model in Model Selection dialog box and Click “OK”. If you want to acquire the model automatically, Click “Auto”.



**Figure 5.1-4 Model Selection dialog box**



5. Click “OK” to close the Device Settings dialog box. The settings of the selected model will be reflected when you open the Printing Preferences next time.



**Figure 5.1-5 Device Settings dialog box**

## 5.2. Changing the display language

In Generic V4 Universal Print Driver, you can change the display language from Printing Preferences.

### Change the display language from Printing Preferences

1. Open the Printing Preferences.

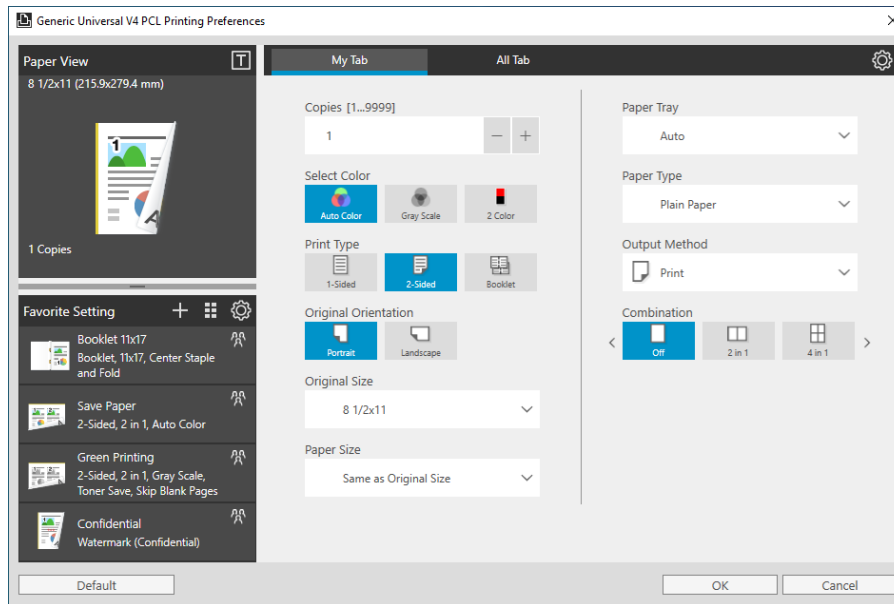


Figure 5.2-1 Printing Preferences – My Tab

2. Click “Language Setting” button in the “Other” group of the “All Tab”.

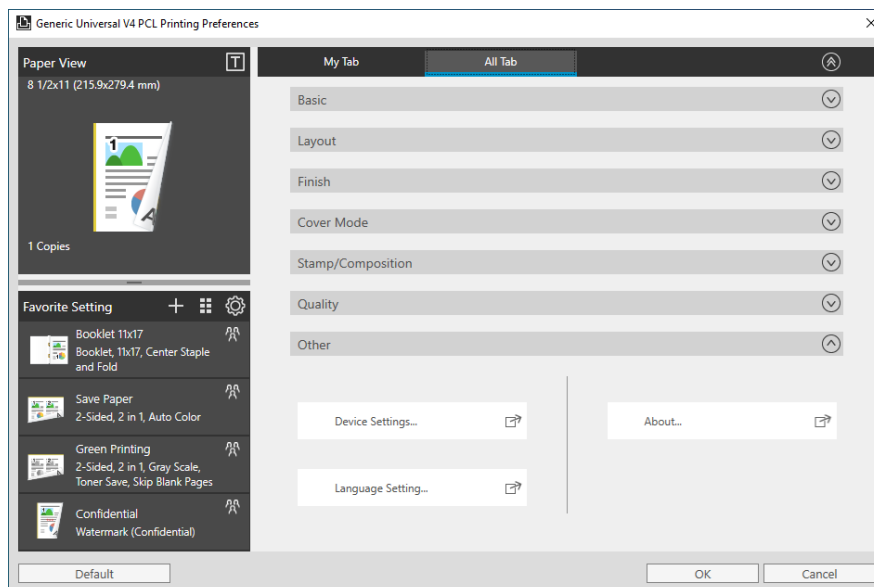
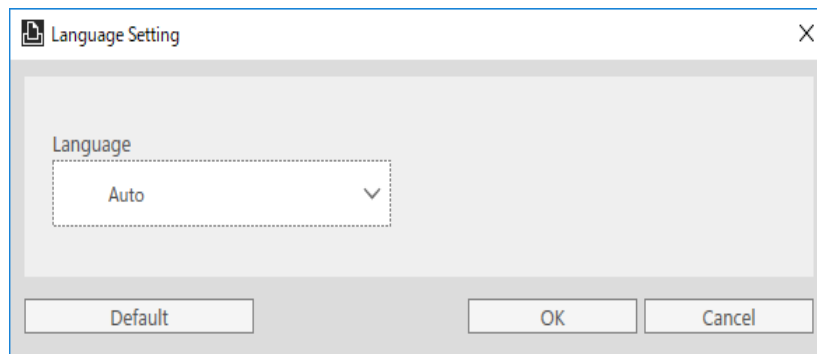


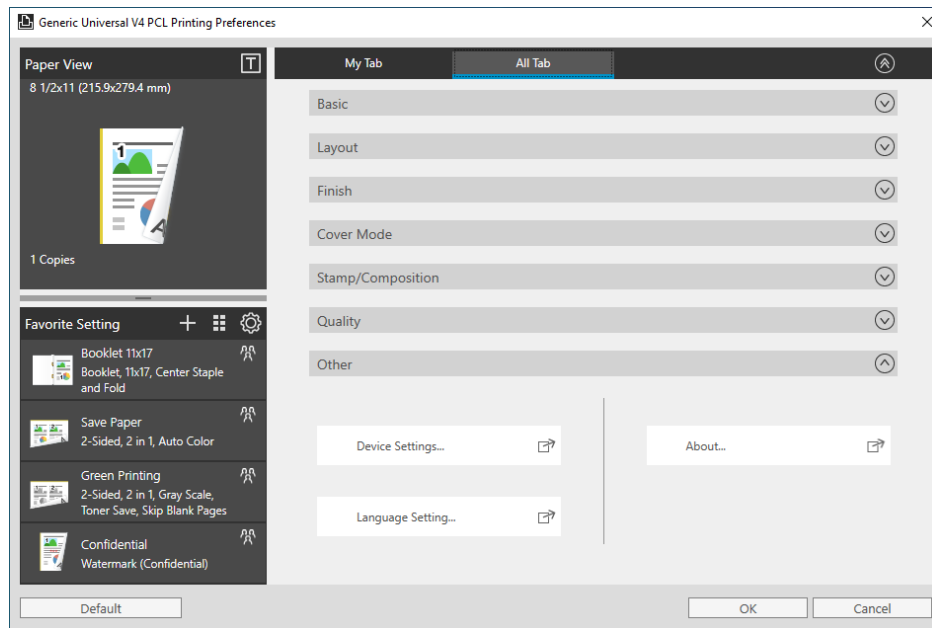
Figure 5.2-2 Printing Preferences – All Tab

3. Set the display language on the Language Setting dialog box and click “OK” to close it.



**Figure 5.2-3 Language Setting dialog box**

4. Click “OK” to close the Printing Preferences. The display language will be changed when you open the Printing Preferences next time.



**Figure 5.2-4 Printing Preferences – All Tab**

## 5.3. Editing My Tab

In Generic V4 Universal Print Driver, you can edit My Tab screen and customize it.

1. Open the Printing Preferences and click the gear icon in the upper right corner of the screen.

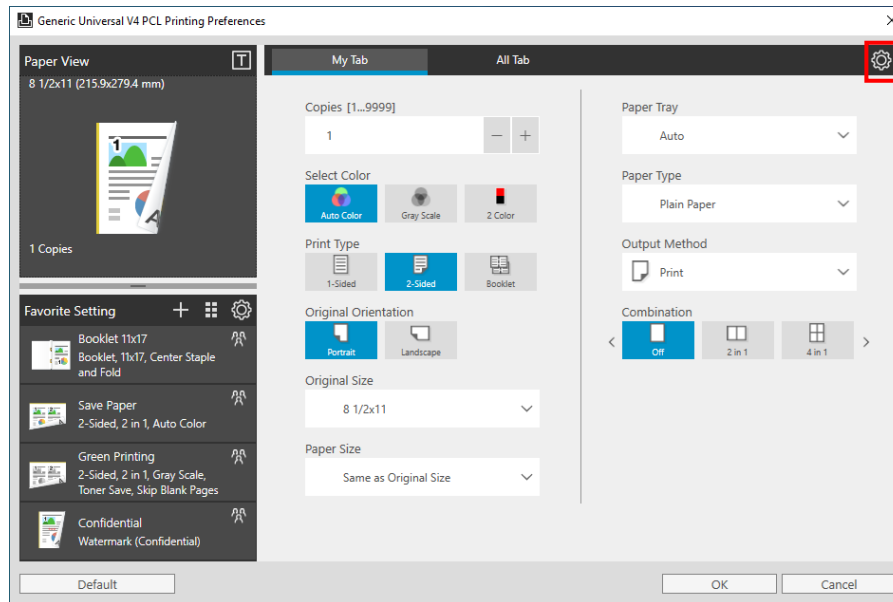


Figure 5.3-1 Printing Preferences – My Tab

2. Entering the My Tab edit mode, you can add, delete, and change the items for your favorite.

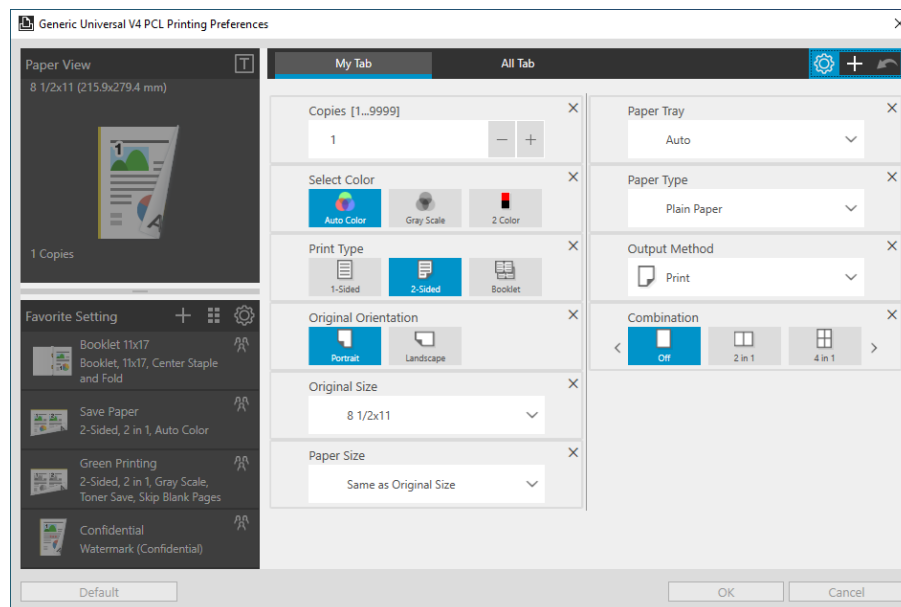
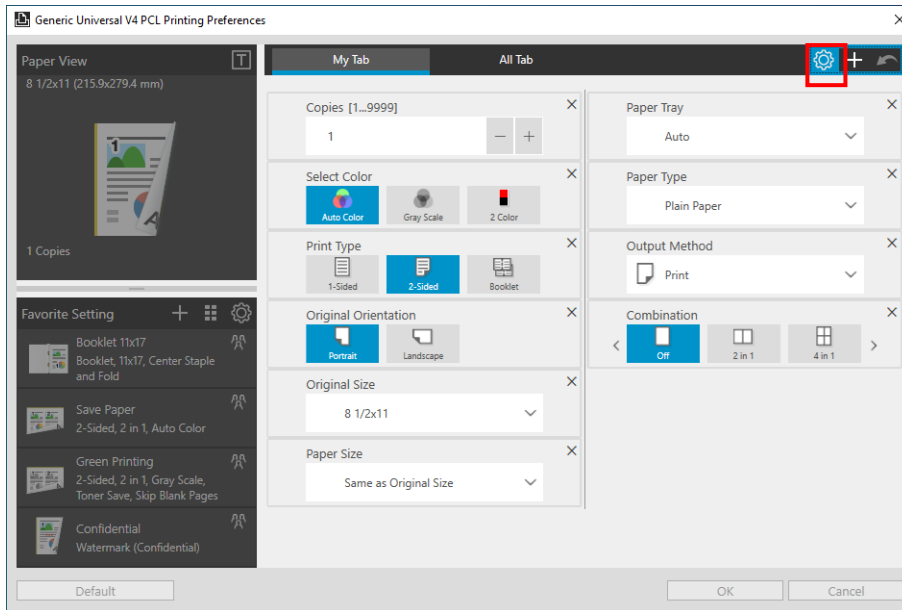


Figure 5.3-2 Edit My Tab

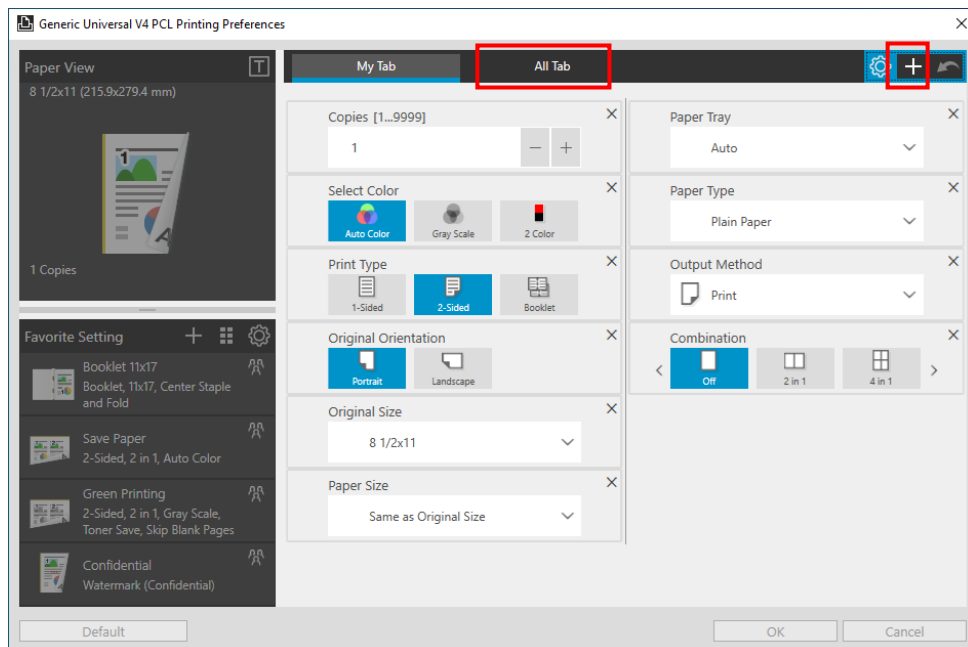
3. Click the gear icon again to save the edited content and end the edit mode of My Tab.



**Figure 5.3-3 Edit My Tab**

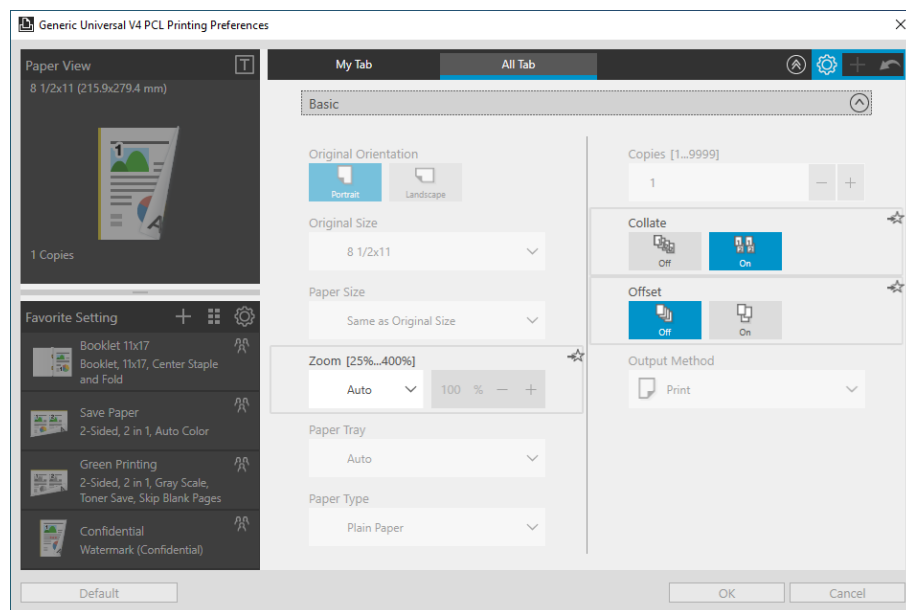
### 5.3.1. Adding My Tab

1. Entering the My Tab edit mode, click on the "+" icon in the upper right or click on "All Tab" tab.



**Figure 5.3-4 Printing Preferences – My Tab**

2. Move to the "All Tab" tab. The print settings, which have been added on My Tab are shown to be gray.

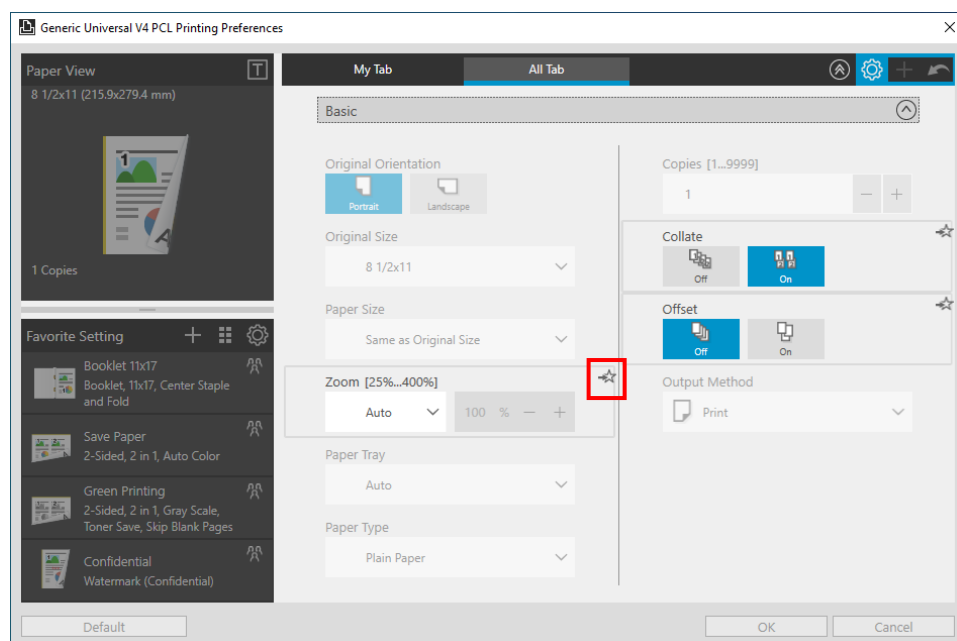


**Figure 5.3-5 Edit My Tab**

The following two methods can add print settings to My Tab.

#### **Method 1 Use the Add button to add**

- ① Click the [☆] icon on the top right of the selected item in All Tab.



**Figure 5.3-6 Edit My Tab**

② The print settings that have been clicked will be added to the My Tab and then it will be gray.

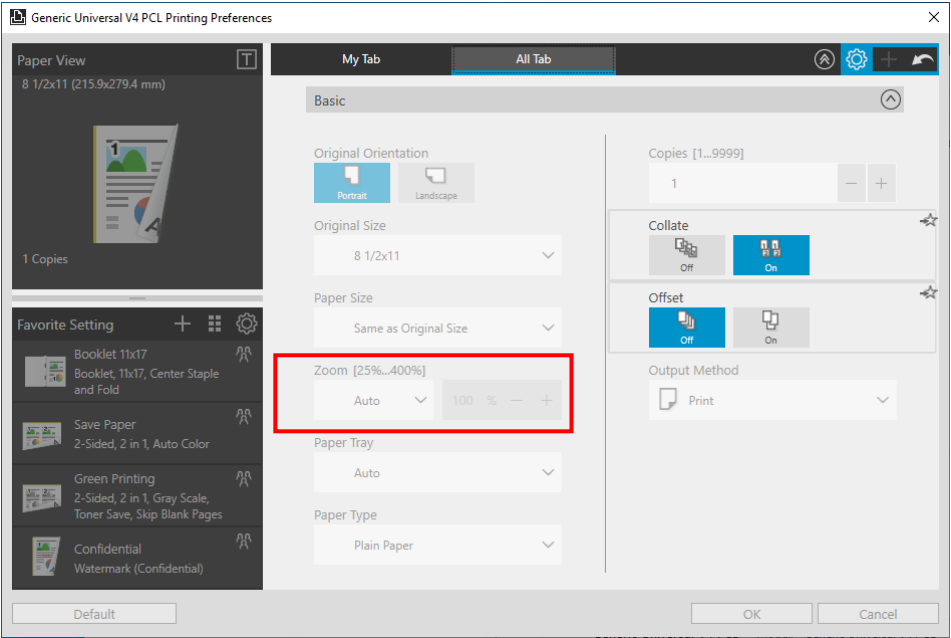


Figure 5.3-7 Edit My Tab

② Click "My Tab" tab to confirm that the item have been added on the My Tab.

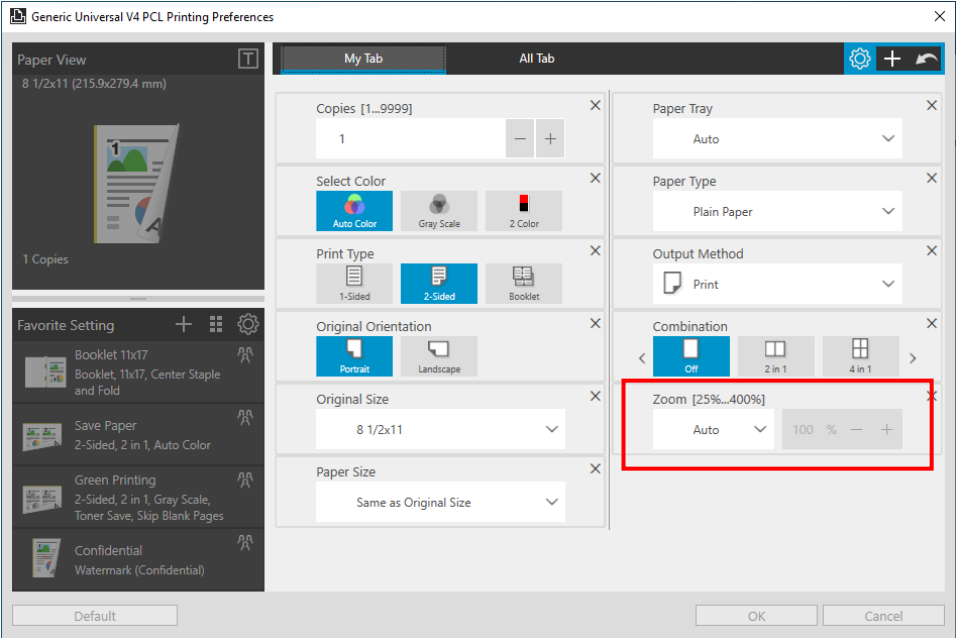
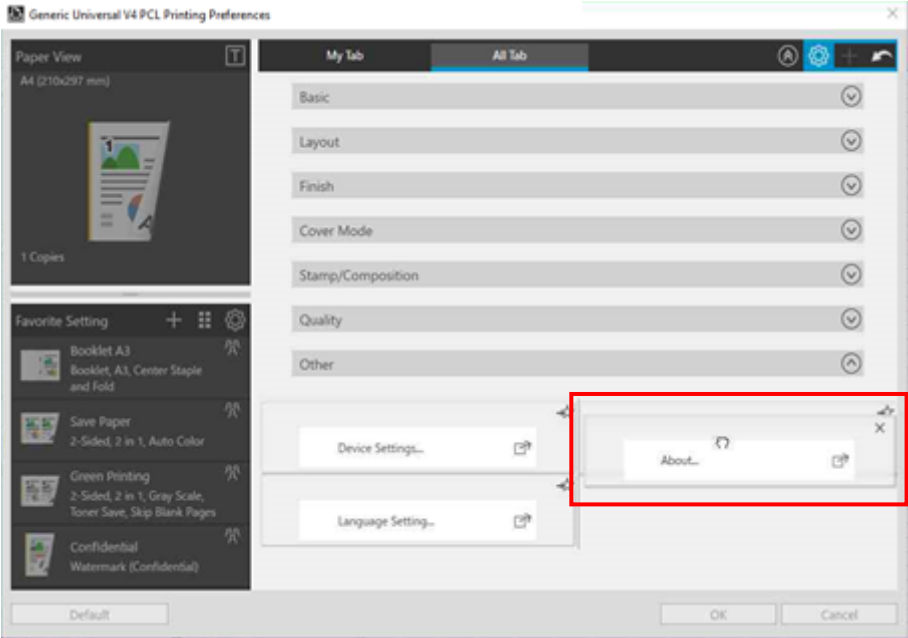


Figure 5.3-8 Edit My Tab

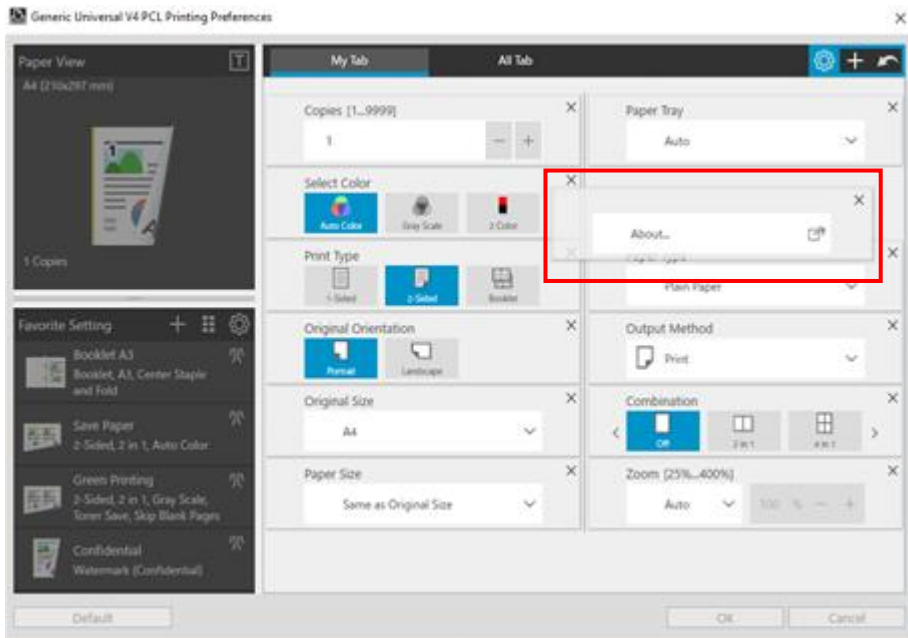
**Method 2 Drag and drop to add**

- ① Drag the print setting you want to add.



**Figure 5.3-9 Edit My Tab**

- ② Entering My Tab mode. Move the dragged item to the place as your like.



**Figure 5.3-10 Edit My Tab**



### 5.3.2. Deleting My Tab

1. Entering edit My Tab mode. Click the [X] icon of the selected item. Delete the selected item from My Tab.

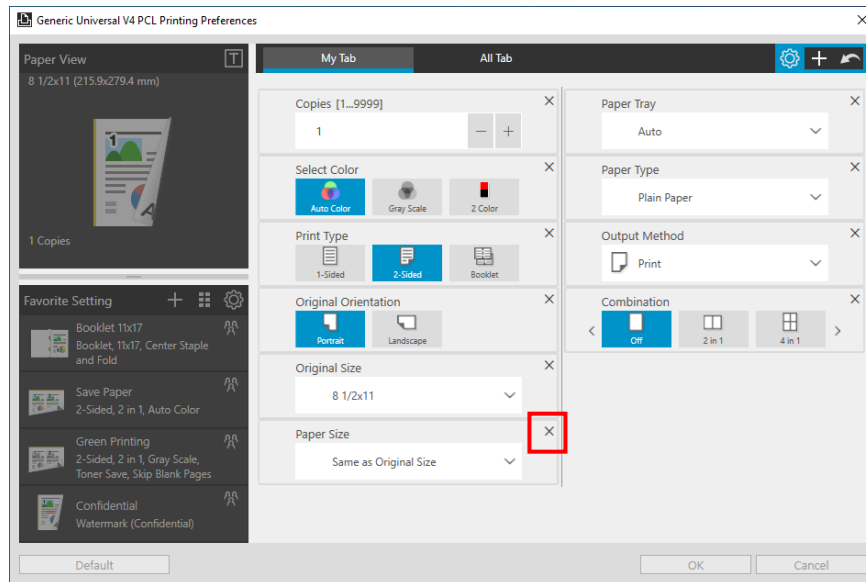


Figure 5.3-11 Edit My Tab

### 5.3.3. Moving My Tab

1. Entering edit My Tab mode. Drag the selected item in My Tab. Move the place of the item left/right/up/down.

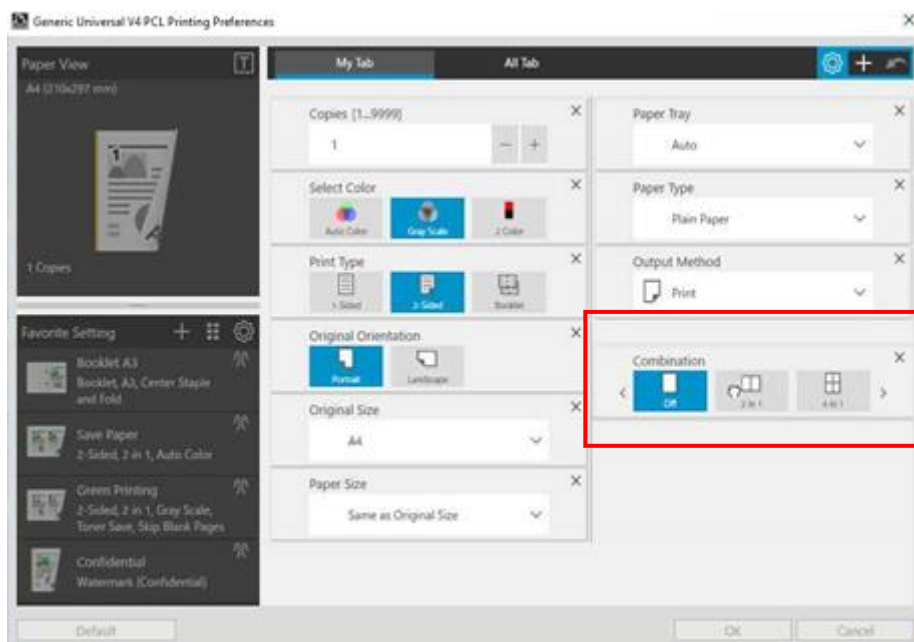


Figure 5.3-12 Edit My Tab

## 5.4. Adding Favorite Setting

According to the following steps, you can add the print settings into the Favorite.

1. Open the Printing Preferences and make print settings.
2. Click the “+” icon in the Favorite Setting area.

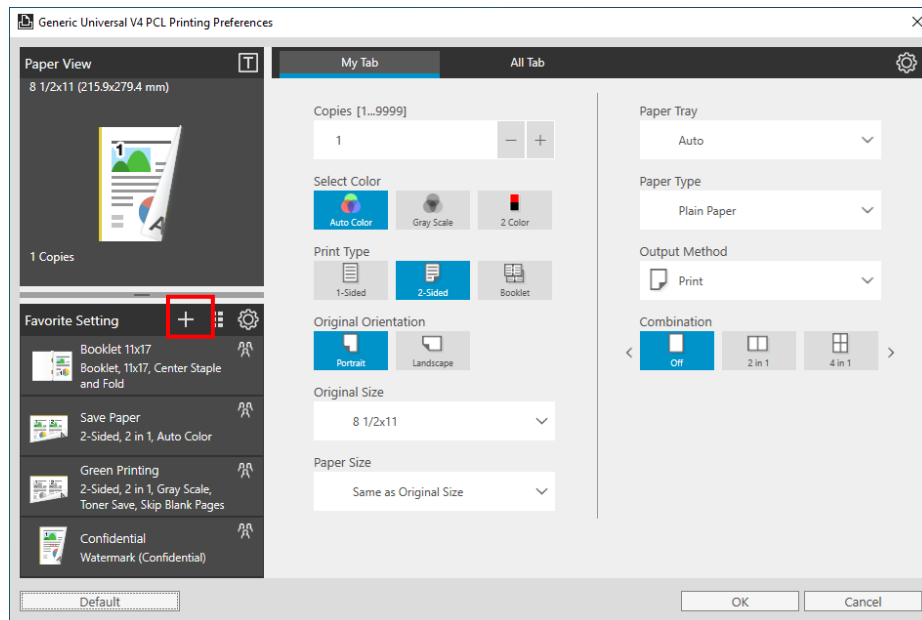


Figure 5.4-1 Printing Preferences –Favorite

3. The current printing settings have been added into the Favorite. The name and comment are default and can be modified by clicking 2 times.

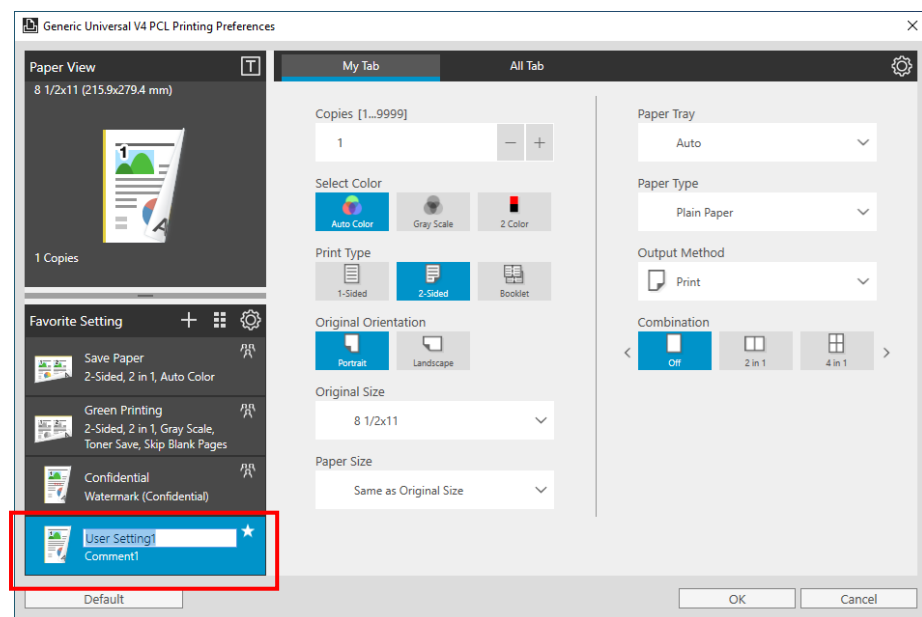
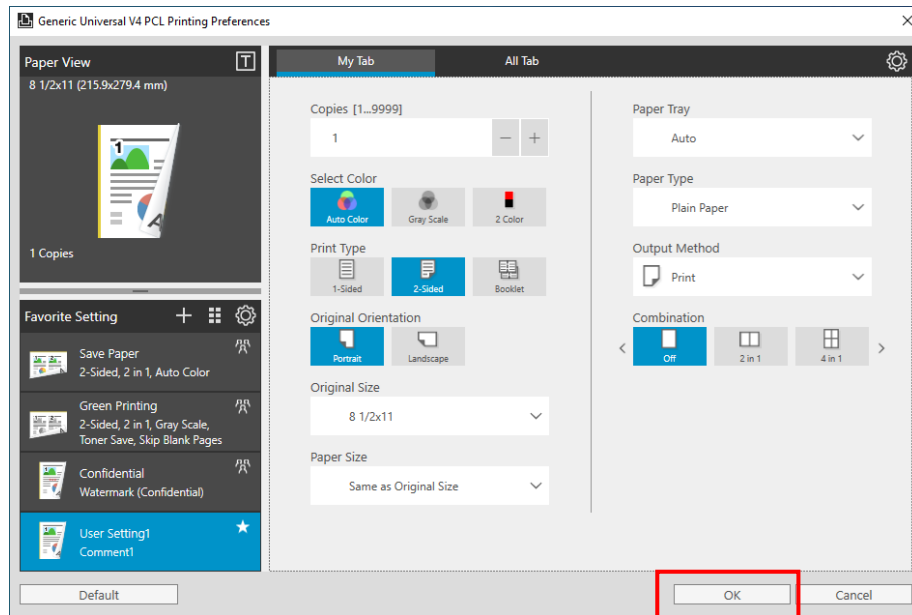


Figure 5.4-2 Add Favorite Setting

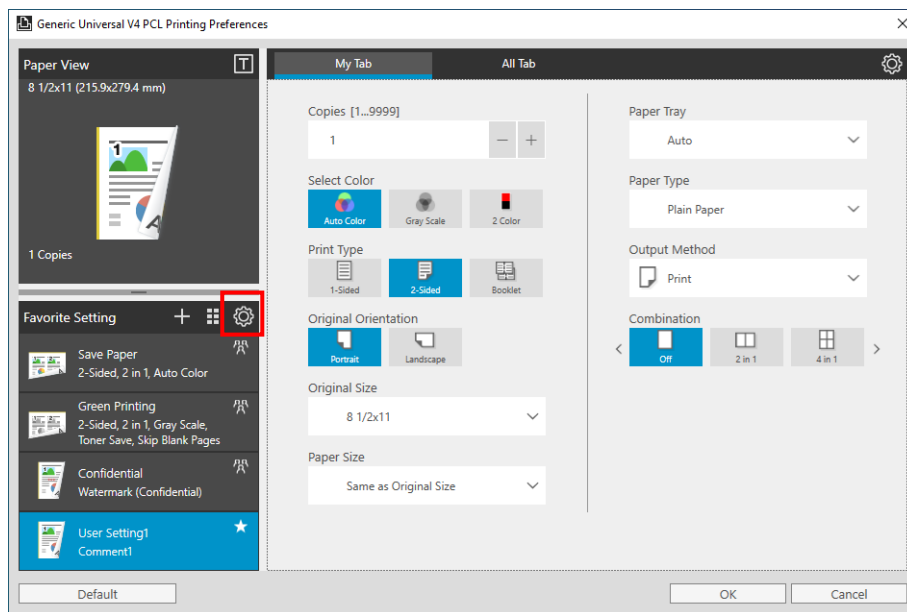
4. Click "OK" button on the print setting. After the screen is closed, the added Favorite will be saved.



**Figure 5.4-3 Printing Preferences –Favorite**

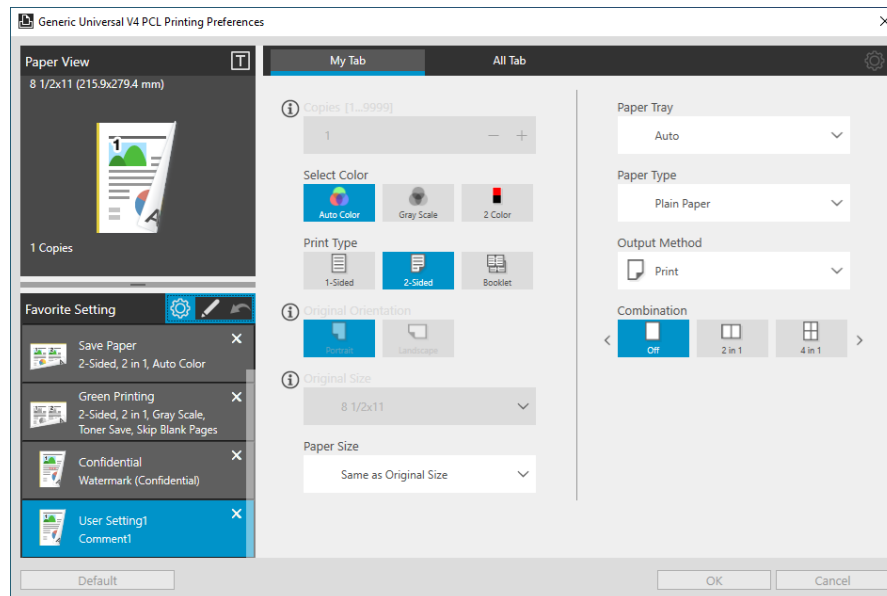
## 5.5. Editing Favorite Setting

1. Open the Printing Preferences and click the gear icon in the Favorite Setting area.



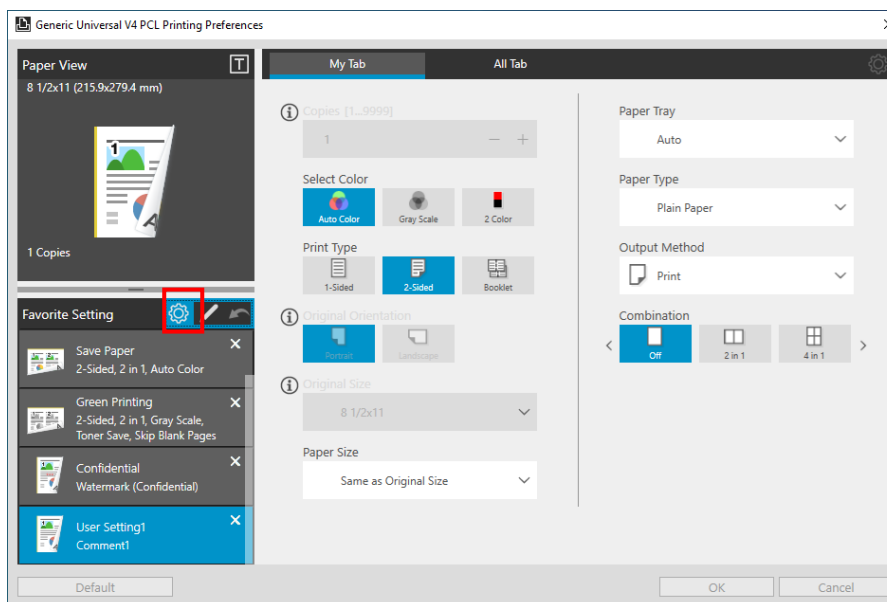
**Figure 5.5-1 Printing Preferences– My Tab**

2. Entering the Favorite Setting edit mode, you can delete, edit print setting and change configures.



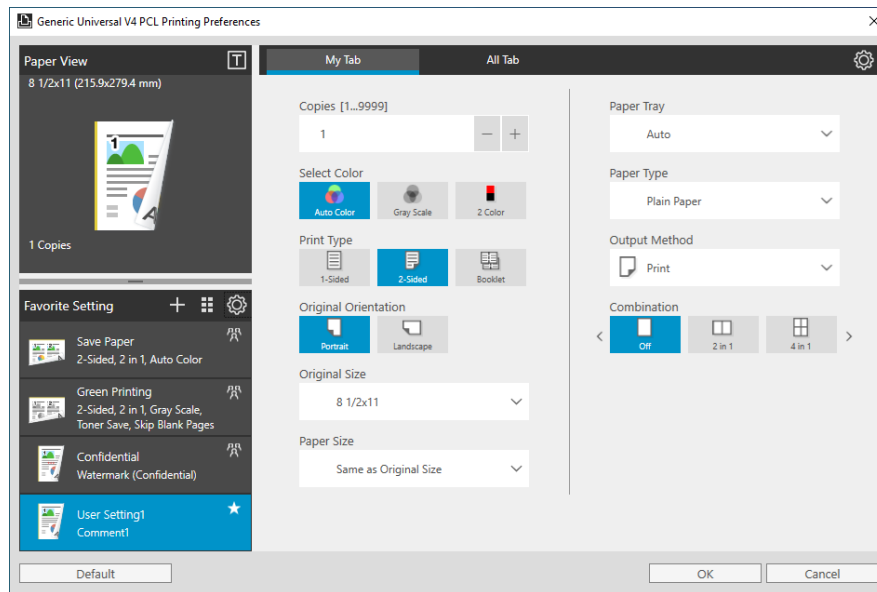
**Figure 5.5-2 Favorite Setting**

3. Click the gear icon again to save the edited content and end the edit mode of the Favorite Setting.



**Figure 5.5-3 Favorite Setting**

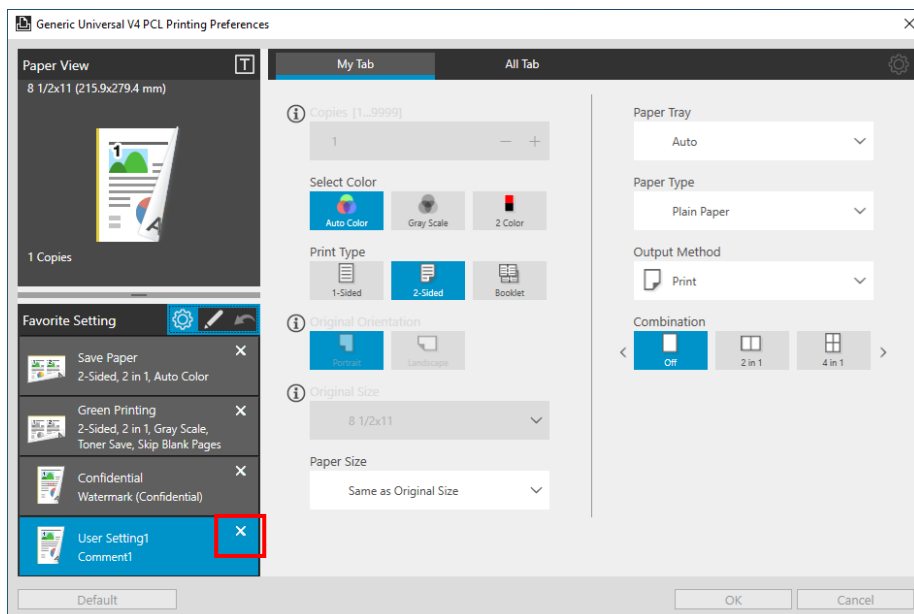
- Click "OK" button on the print setting. After the screen is closed, the added Favorite will be saved.



**Figure 5.5-4 Favorite Setting**

#### 5.5.1. Deleting Favorite Setting

- Entering edit Favorite Setting mode. Click the [×] icon of the selected Favorite. Delete the selected Favorite from Favorite Setting.



**Figure 5.5-5 Favorite Setting**

### 5.5.2. Moving Favorite Setting

1. Entering edit Favorite Setting mode. Drag the Favorite to move, moving the Favorite display position to the top / bottom.

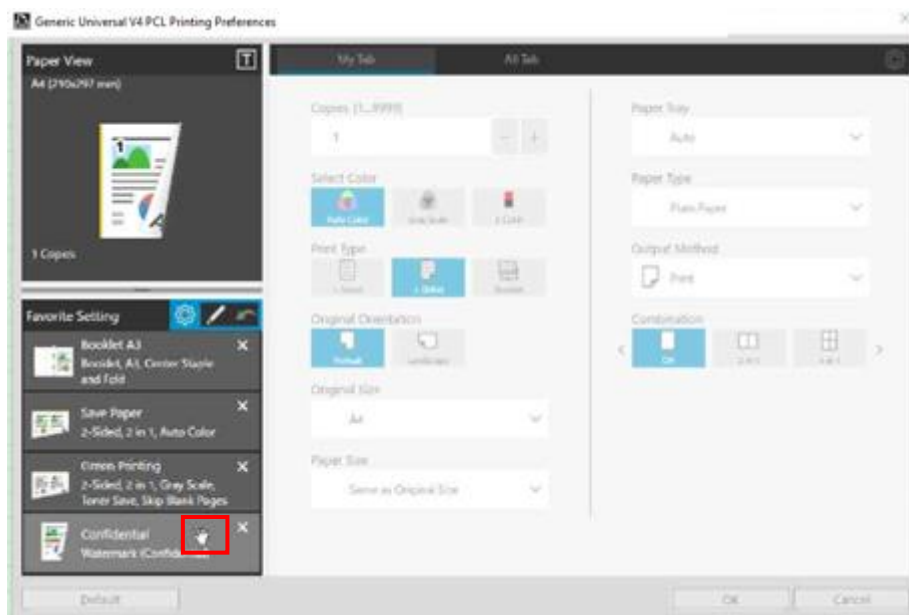


Figure 5.5-6 Favorite Setting

### 5.5.3. Editing Favorite Print Setting

1. Entering the Favorite Setting edit mode, after selecting one of the Favorite, the printed setting in the Favorite on the right side is reflected.

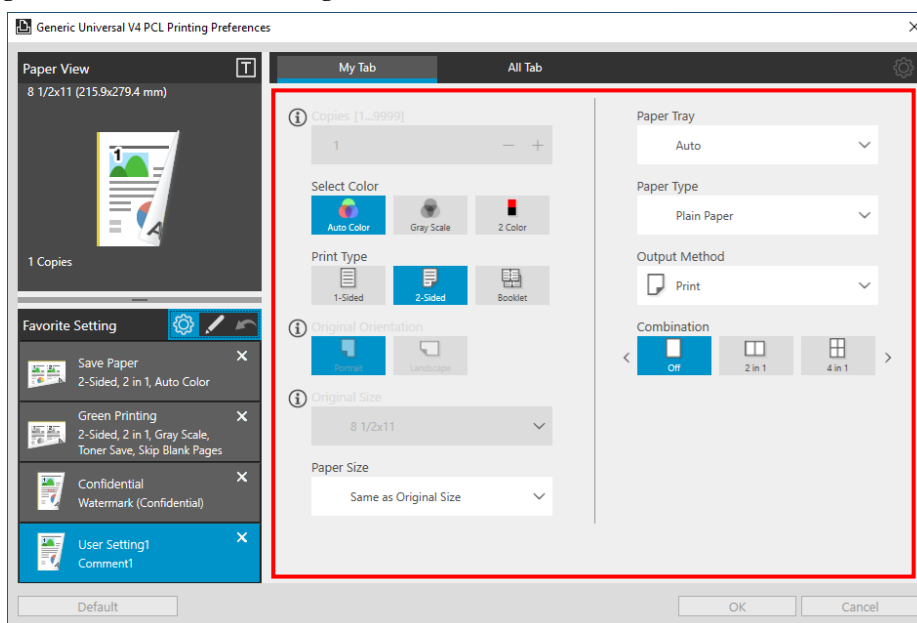
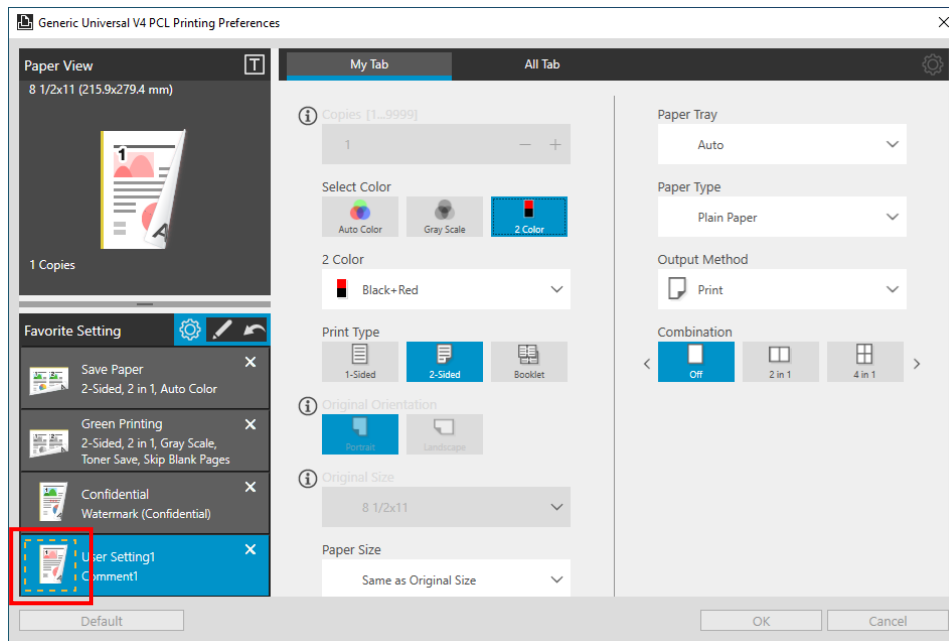


Figure 5.5-7 Printing Preferences –Favorite

2. Select the favorite you want to edit, and if you have a print setting editing, the favorite icon shows the frame in the edit.

※The preset favorite cannot be edited.



**Figure 5.5-8 Favorite Setting**

3. The edit information will be update by ending the Edit mode.

### 5.5.4. Edit Favorite Setting

1. Entering the Favorite Setting edit mode. Click the pencil icon in the Favorite Setting screen.

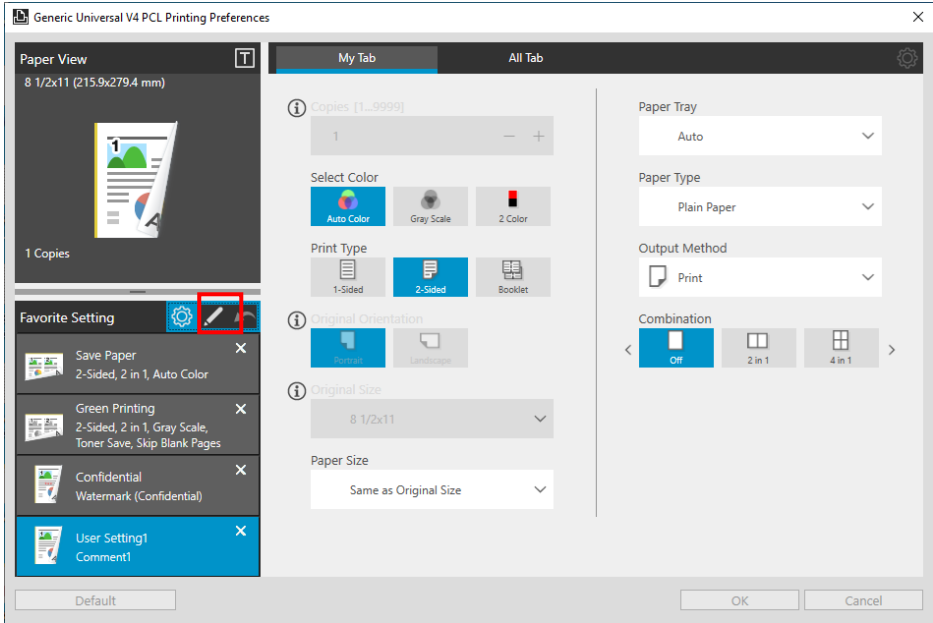


Figure 5.5-9 Favorite Setting

2. Edit Favorite Setting dialog box is displayed.

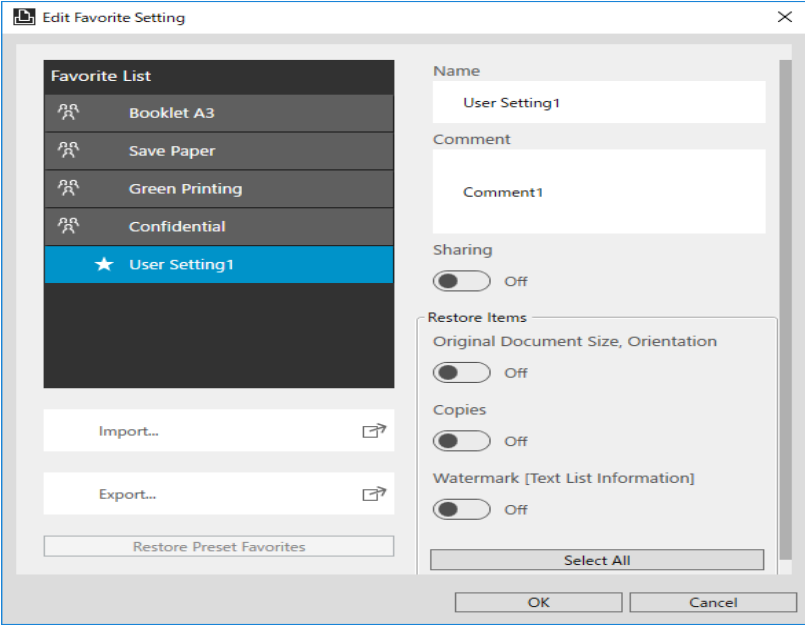


Figure 5.5-10 Edit Favorite Setting



The descriptions of the settings in Edit Favorite Setting dialog box are described below.

Parameter	Description
Favorite List	Display the saved favorite settings in list.
Import	Read the favorite settings information in a saved file and add it to the Favorite Setting List.
Export	Save the favorite setting selected in the Favorite List as a file.
Restore Preset Favorites	Restore all hidden preset favorites and display the favorite settings in list.
Name	Enter the name of the selected item in the Favorite List
Comment	Enter the comment of the selected item in the Favorite List
Sharing	Specify the sharing setting of the selected item in the Favorite List
Restore Items	Set whether the information saved by the following [Favorite] is reflected on the UI when Restore Items for [Favorite]
Original Document Size, Orientation	Set the items of [Document Size] [Orientation] in [Basic]
Copies	Set Copies of [Basic]
Watermark [Text List Information]	Set [Watermark] list of Stamp/Composition.
Restore Common Settings	Set already sharing watermark. ※The state which display when watermark List Information is on
Select All	Select the Restore items of Select All

**Figure 5.5-11 Descriptions of the Edit Favorite Setting dialog box**

## 5.6. Administrator Customization

Generic V4 Universal Print Driver supports the function that customize the print settings by administrator. Default value of print setting can be changed or fixed by using this function.

### 5.6.1. Print setting of customization target

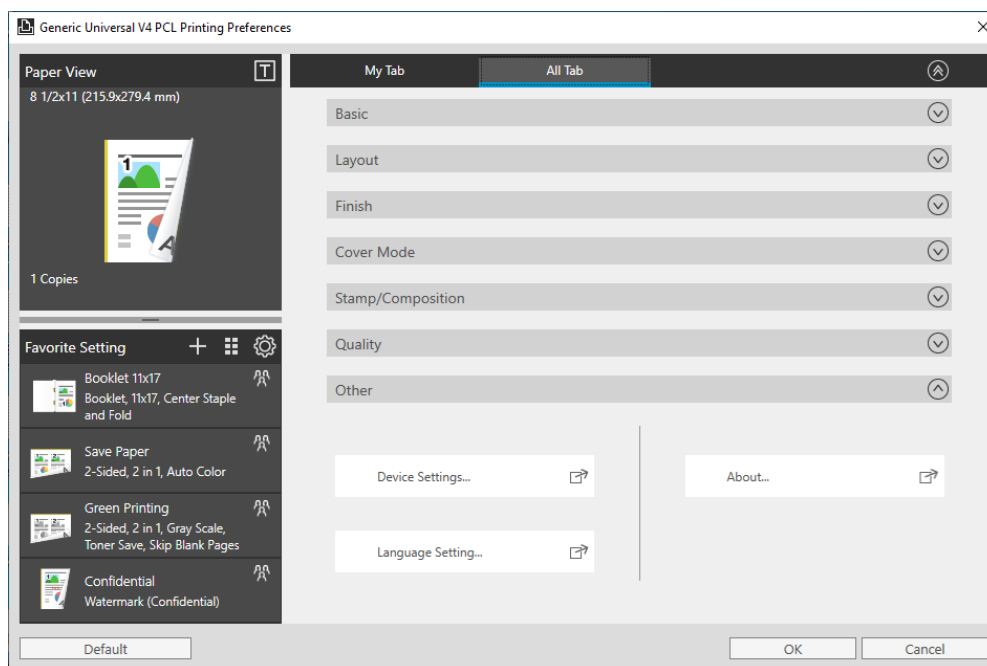
Item name		Setting value
Select Color		Auto Color
		Gray Scale
		Black + Red
		Black + Green
		Black + Blue
		Black + Cyan
		Black + Magenta
		Black + Yellow
		Black + Chinese Red
Print Type		1-Sided
		2-Sided
		Booklet
Output Method		Print
		Store Job
		Print and Hold
		Secure Print
		Save in User Box
		Save in User Box/Print
		Proof Print
		ID & Print
Secure Print	Secure Print ID	Arbitrary value in the input range
	Password	Arbitrary value in the input range
Save in User Box	File Name	Arbitrary value in the input range
	User Box Number	Arbitrary value in the input range
User Authentication	User	Public User
		Recipient User
	User Name	Use Windows Login ID
		Edit User Name

	Password	Arbitrary value in the input range
	Server Setting	Server1~ Server20
	MFP	Enhanced Server
	Authentication	External Server
Account Track		Device
	Department Name	Arbitrary value in the input range
	Password	Arbitrary value in the input range
Import...		
Export...		

### 5.6.2. Setting method

Open the Admin Configuration dialog from the Printing Preferences by the following procedures.

1. Open the Printing Preferences.
2. Click “All Tab” .



☒ 5.6-1 Printing Preferences – All Tab

3. Click “Device Settings...” button in the “Other” group.
4. Confirmation dialog box will be displayed. Select “Yes” or “No”.

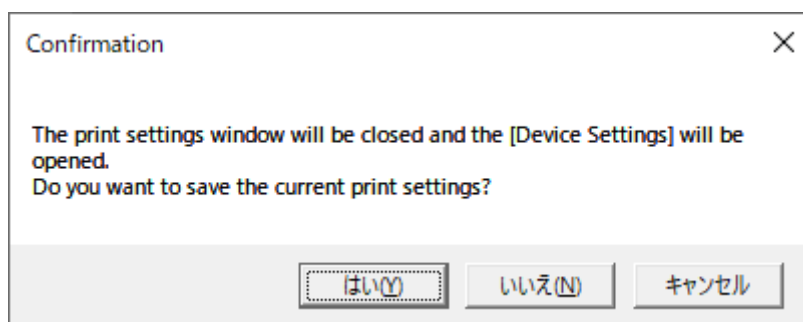


図 5.6-2 Confirmation

5. Device Settings dialog box is displayed. Click “Administrator Customize...”.

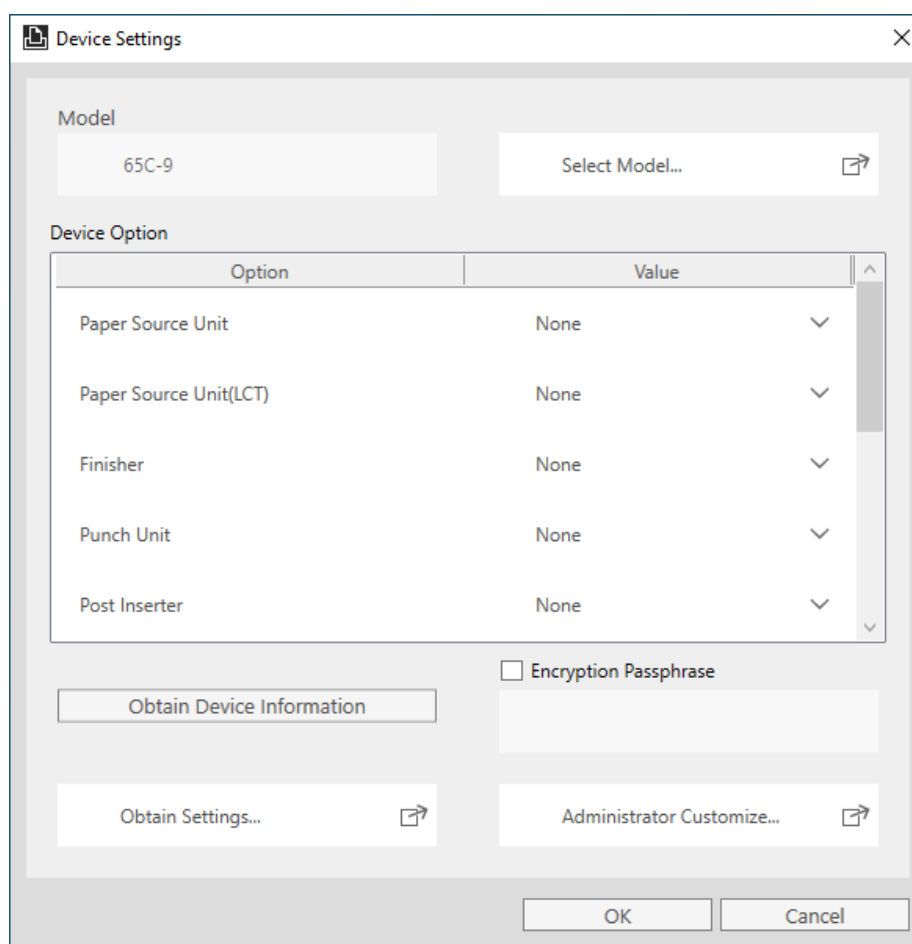
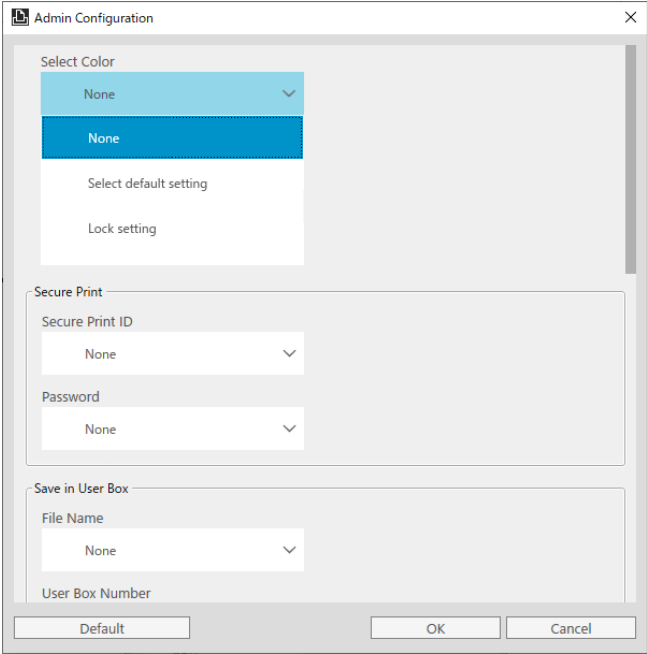


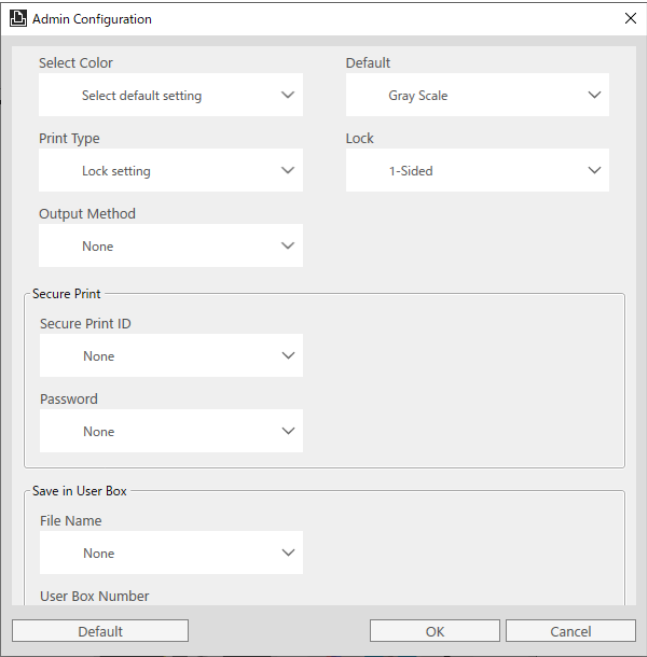
図 5.6-3 Device Settings dialog box

6. Admin Configuration dialog will be displayed. Select the method of customize print settings in the left column. Select “Select default setting” if you want to specify the default value, or select “Lock setting” if you want to fix the value.



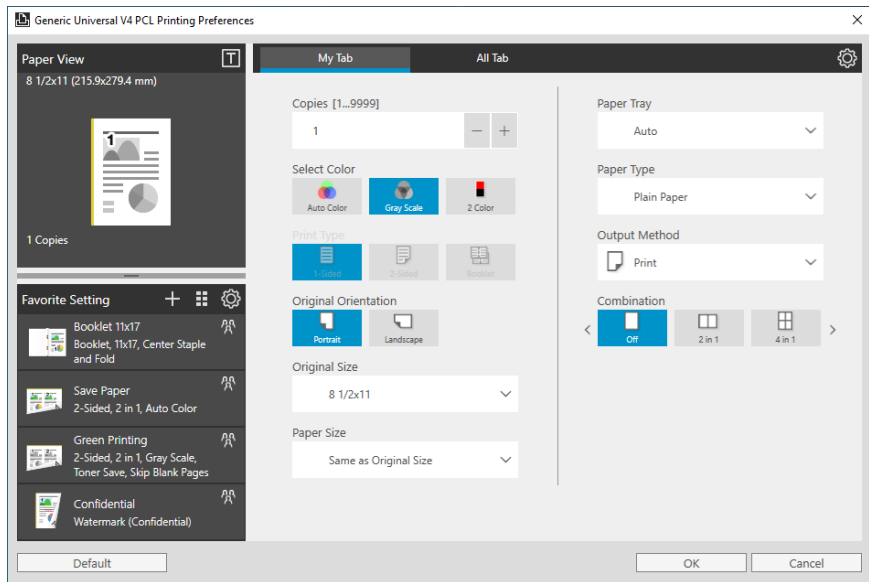
☒ 5.6-2 Admin Configuration dialog box 1

7. Next, select the value of the feature in the right column.



☒ 5.6-5 Admin Configuration dialog box 2

- In the above example, Gray Scale has been selected to the default value of Select Color, and Print Type has been locked to 1-Sided. Printing Preferences are as follows.



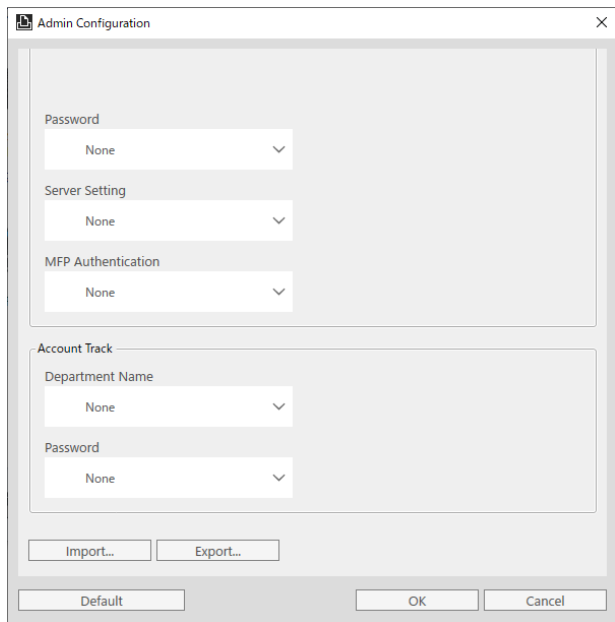
☒ 5.6-6 Printing Preferences

### 5.6.3. Export and import the setting of Administrator Customization

It is possible to export the settings of Administrator Customization to file (.KAC file) and import to another Print Queue.

#### Method of export

- Click “Export...”.



☒ 5.6-8 Export Selection

2. Specify location and file name, and then click “Save”.

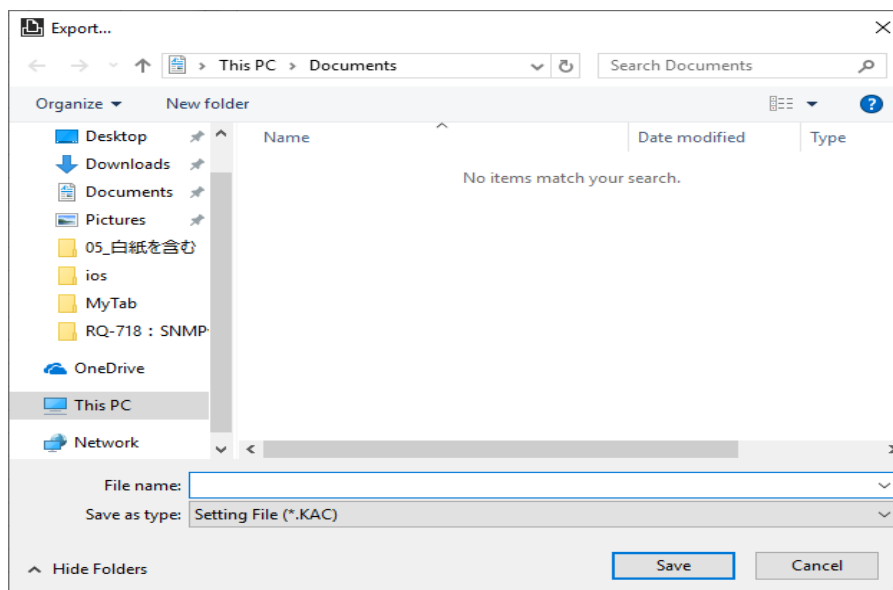


図 5.6-9 Export Destination Selection

## Method of import

1. Click “Import...”.

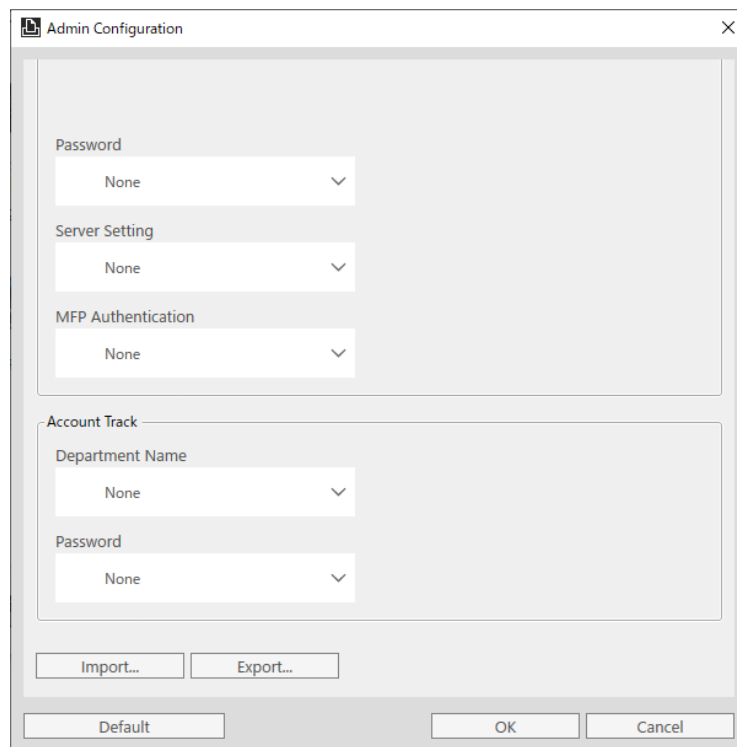


図 5.6-10 Import selection

3. Select the .KAC to import and then click “Open”.

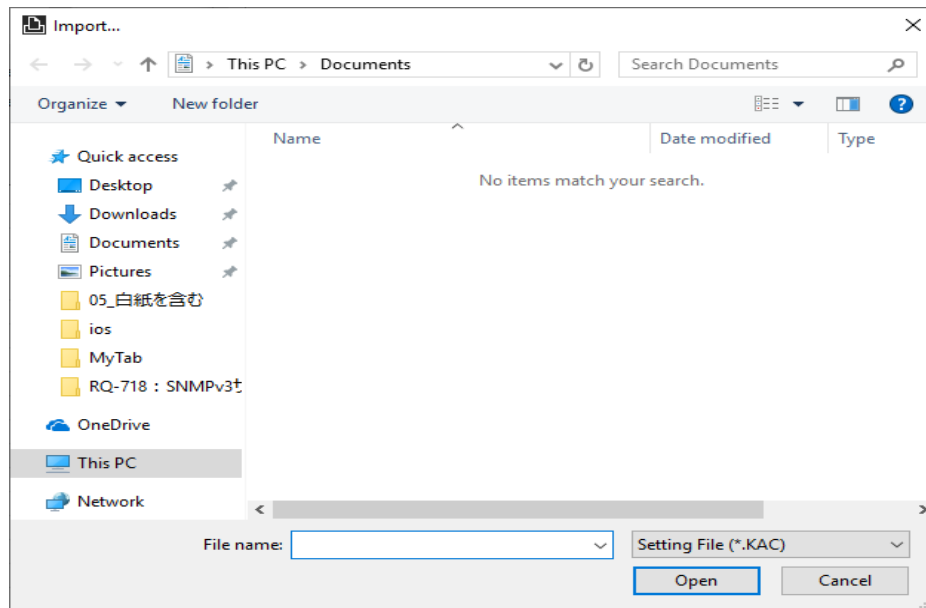


図 5.6-11 Import Destination Selection



## 6. Frequently Asked Questions

Question	Answer
Is the Citrix environment Supported?	No. Generic V4 Universal Print Driver do not support Citrix environment
Can I Use My Tab function?	Yes. My Tab function is available in Generic V4 Universal Print Driver.
Can I update from UPD Ver.3.x	No. Generic V4 Universal Print Driver is a driver with a new architecture, which is different from UPD Ver.3.x. So Generic V4 Universal Print Driver cannot be updated from UPD Ver.3.x.
Is the Windows 10 S Mode Supported?	Yes, Generic V4 Universal Print Driver Ver.2.0 supports the Windows 10 S Mode. However, you cannot install (steps 3.2.1, 3.2.2) and uninstall (steps 3.3.1, 3.3.2) with the installer. Please install and uninstall the driver manually.

**Table 6-1 FAQ**

7. Appendix

7.1. List of support functions of each model

Function (1/12)	Baseline	A3 Color												
		65C-9/ 55C-9/ 45C-9	36C-9/ 30C-9/ 25C-9	28C-8/ 22C-8	26C-7/ 22C-7	60C-6(e)/ 60C-7(e)	55C-6(e)/ 45C-6(e)/ 36C-6(e)/ 28C-6(e)/ 22C-6(e)	28C-2/ 22C-2/ 22C-3	70C-10/ 65C-10	36C-0i/ 30C-0i/ 25C-0i	65C-0i/ 55C-0i/ 45C-0i	28C-7i/ 25C-7i/ 22C-7i	28C-6i/ 26C-6i/ 25C-6i/ 22C-6i	70C-0i
Basic														
Original Orientation	○	○	○	○	○	○	○	○	○	○	○	○	○	○
Original Size	○	○	○	○	○	○	○	○	○	○	○	○	○	○
Paper Size	○	○	○	○	○	○	○	○	○	○	○	○	○	○
Zoom	○	○	○	○	○	○	○	○	○	○	○	○	○	○
Paper Tray	○	○	○	○	○	○	○	○	○	○	○	○	○	○
Paper Type	○	○	○	○	○	○	○	○	○	○	○	○	○	○
Copies	○	○	○	○	○	○	○	○	○	○	○	○	○	○
Collate	○	○	○	○	○	○	○	○	○	○	○	○	○	○
Offset	○	○	○	○	○	○	○	○	×	○	○	○	○	○
Output Method	○	○	○	○	○	○	○	○	○	○	○	○	○	○
Print	○	○	○	○	○	○	○	○	○	○	○	○	○	○
Store Job	×	×	×	×	×	×	×	×	×	×	×	×	×	×
Print and Hold	×	×	×	×	×	×	×	×	×	×	×	×	×	×
Secure Print	×	○	○	○	○	○	○	○	○	○	○	○	○	○
Save in User Box	×	○	○	○	○	×	○	○	×	○	○	○	○	○
Save in User Box/Print	×	○	○	○	○	×	○	○	×	○	○	○	○	○
Proof Print	○	○	○	○	○	○	○	○	○	○	○	○	○	○
ID& Print	×	○	○	○	○	×	○	○	×	○	○	○	○	○
*1: WSD Protocol、×														

Table 7-1 List of support functions of each model (1/12)

Function (2/12)		Baseline	A3 Color												
			65C-9/ 55C-9/ 45C-9	36C-9/ 30C-9/ 25C-9	28C-8/ 22C-8	26C-7/ 22C-7	60C-6(e)/ 60C-7(e)	55C-6(e)/ 45C-6(e)/ 36C-6(e)/ 28C-6(e)/ 22C-6(e)	28C-2/ 22C-2/ 22C-3	70C-10 / 65C-10	36C-0i/ 30C-0i/ 25C-0i	65C-0i/ 55C-0i/ 45C-0i	28C-7i/ 25C-7i/ 22C-7i	28C-6i/ 26C-6i/ 25C-6i/ 22C-6i	70C-0i
Authentication/Account Track		×	○	○	○	○	○	○	○	○	○	○	○	○	○
User Authentication		×	○	○	○	○	○	○	○	○	○	○	○	○	○
Enhanced Server		×	○	○	○	○	○	○	×	○	○	○	○	○	○
External Server		×	○	○	○	○	○	○	×	○	○	○	○	○	○
Device		×	○	○	○	○	○	○	○	○	○	○	○	○	○
Account Track		×	○	○	○	○	○	○	○	○	○	○	○	○	○
Layout															
Combination (N in 1)		○	○	○	○	○	○	○	○	○	○	○	○	○	○
Poster		○	○	○	○	○	○	○	○	○	○	○	○	○	○
Rotate 180		○	○	○	○	○	○	○	○	○	○	○	○	○	○
Skip Blank Pages		○	○	○	○	○	○	○	○	○	○	○	○	○	○
Print Type		○	○	○	○	○	○	○	○	○	○	○	○	○	○
1-Sided		○	○	○	○	○	○	○	○	○	○	○	○	○	○
2-Sided		○	○	○	○	○	○	○	○	○	○	○	○	○	○
Booklet (Device)		○	○	○	○	○	○	○	×	○	○	○	○	○	○
Booklet (Driver)		×	×	×	×	×	×	×	○	×	×	×	×	×	×
Binding Position		○	○	○	○	○	○	○	○	○	○	○	○	○	○
Binding Margin		○	○	○	○	○	○	○	○	○	○	○	○	○	○
Finish															
Staple		○	○	○	○	×	○	○	×	○	○	○	○	×	○
Center Staple and Fold		○	○	○	○	×	○	○	×	○	○	○	○	×	○
Punch		○	○	○	○	×	○	○	×	○	○	○	○	×	○
Fold		○	○	○	○	×	○	○	×	○	○	○	○	×	○
Output Tray		○	○	○	○	×	○	○	×	○	○	○	○	×	○
Paper Arrangement		○	○	○	○	○	○	○	×	○	○	○	○	○	○
Prioritize Arranging Papers		○	○	○	○	○	○	○	×	○	○	○	○	○	○
Prioritize Productivity		○	○	○	○	○	○	○	×	○	○	○	○	○	○

Table 7-2 List of support functions of each model (2/12)

Function (3/12)	Baseline	A3 Color												
		65C-9/ 55C-9/ 45C-9	36C-9/ 30C-9/ 25C-9	28C-8/ 22C-8	26C-7/ 22C-7	60C-6(e)/ 60C-7(e)	55C-6(e)/ 45C-6(e)/ 36C-6(e)/ 28C-6(e)/ 22C-6(e)	28C-2/ 22C-2/ 22C-3	70C-10/ 65C-10	36C-0i/ 30C-0i/ 25C-0i	65C-0i/ 55C-0i/ 45C-0i	28C-7i/ 25C-7i/ 22C-7i	28C-6i/ 26C-6i/ 25C-6i/ 22C-6i	70C-0i
Cover Mode														
Front Cover	○	○	○	○	○	○	○	○	○	○	○	○	○	○
Back Cover	○	○	○	○	○	○	○	○	○	○	○	○	○	○
Front Cover from Post Inserter	○	○	×	×	×	○	○	×	○	×	○	×	×	○
Back Cover from Post Inserter	○	○	×	×	×	○	○	×	○	×	○	×	×	○
Transparency Interleave	○	○	○	○	○	○	○	×	○	○	○	○	○	○
Stamp/Composition														
Watermark	○	○	○	○	○	○	○	○	○	○	○	○	○	○
Quality														
Select Color	○	○	○	○	○	○	○	○	○	○	○	○	○	○
Auto Color	○	○	○	○	○	○	○	○	○	○	○	○	○	○
Gray Scale	○	○	○	○	○	○	○	○	○	○	○	○	○	○
2 Color	○	○	○	○	○	○	○	○	○	○	○	○	○	○
Resolution	○	○	○	○	○	○	○	○	○	○	○	○	○	○
Toner Save	○	○	○	○	○	○	○	○	○	○	○	○	○	○
Other														
Quiet Mode	×	×	×	×	×	×	×	×	×	×	×	×	×	×
Improve Print Output	×	×	×	×	×	×	×	×	×	×	×	×	×	×
Device Settings	○	○	○	○	○	○	○	○	○	○	○	○	○	○
Language Setting	○	○	○	○	○	○	○	○	○	○	○	○	○	○
About	○	○	○	○	○	○	○	○	○	○	○	○	○	○

Table 7-1 List of support functions of each model (3/12)

Function (4/12)	A3 BW								
	95BW-9/ 80BW-9/ 75BW-9	55BW-9/ 45BW-9	36BW-8/ 28BW-8/ 22BW-8	75BW-5(e)/ 65BW-5 (e)	55BW-5e/ 45BW-5e/ 36BW-5e/ 28BW-5e/ 22BW-5e	36BW-9/ 30BW-9	65BW-9e/ 55BW-9e/ 45BW-9e/ 36BW-9e/ 30BW-9e	30BW-6i/ 26BW-6i/ 24BW-6i/ 22BW-6i	65BW-0i/ 55BW-0i/ 45BW-0i/ 36BW-0i/ 30BW-0i
Basic									
Original Orientation	○	○	○	○	○	○	○	○	○
Original Size	○	○	○	○	○	○	○	○	○
Paper Size	○	○	○	○	○	○	○	○	○
Zoom	○	○	○	○	○	○	○	○	○
Paper Tray	○	○	○	○	○	○	○	○	○
Paper Type	○	○	○	○	○	○	○	○	○
Copies	○	○	○	○	○	○	○	○	○
Collate	○	○	○	○	○	○	○	○	○
Offset	○	○	○	○	○	○	○	○	○
Output Method	○	○	○	○	○	○	○	○	○
Print	○	○	○	○	○	○	○	○	○
Store Job	×	×	×	×	×	×	×	×	×
Print and Hold	×	×	×	×	×	×	×	×	×
Secure Print	○	○	○	○	○	○	○	○	○
Save in User Box	○	○	○	○	○	○	○	○	○
Save in User Box/Print	○	○	○	○	○	○	○	○	○
Proof Print	○	○	○	○	○	○	○	○	○
ID& Print	○	○	○	○	○	○	○	○	○
*1: WSD Protocol、×									

Table 7-4 List of support functions of each model (4/12)

Function (5/12)		A3 BW								
		95BW-9/ 80BW-9/ 75BW-9	55BW-9/ 45BW-9	36BW-8/ 28BW-8/ 22BW-8	75BW-5(e)/ 65BW-5 (e)	55BW-5e/ 45BW-5e/ 36BW-5e/ 28BW-5e/ 22BW-5e	36BW-9/ 30BW-9	65BW-9e/ 55BW-9e/ 45BW-9e/ 36BW-9e/ 30BW-9e	30BW-6i/ 26BW-6i/ 24BW-6i/ 22BW-6i	65BW-0i/ 55BW-0i/ 45BW-0i/ 36BW-0i/ 30BW-0i
	Authentication/Account Track	○	○	○	○	○	○	○	○	○
	User Authentication	○	○	○	○	○	○	○	○	○
	Enhanced Server	○	○	○	○	○	○	○	○	○
	External Server	○	○	○	○	○	○	○	○	○
	Device	○	○	○	○	○	○	○	○	○
	Account Track	○	○	○	○	○	○	○	○	○
	Layout									
Combination (N in 1)	○	○	○	○	○	○	○	○	○	
Poster	○	○	○	○	○	○	○	○	○	
Rotate 180	○	○	○	○	○	○	○	○	○	
Skip Blank Pages	○	○	○	○	○	○	○	○	○	
Print Type	○	○	○	○	○	○	○	○	○	
1-Sided	○	○	○	○	○	○	○	○	○	
2-Sided	○	○	○	○	○	○	○	○	○	
Booklet (Device)	○	○	○	○	○	○	○	○	○	
Booklet (Driver)	×	×	×	×	×	×	×	×	×	
Binding Position	○	○	○	○	○	○	○	○	○	
Binding Margin	○	○	○	○	○	○	○	○	○	
Finish										
Staple	○	○	○	○	○	○	○	×	○	
Center Staple and Fold	○	○	○	○	○	○	○	×	○	
Punch	○	○	○	○	○	○	○	×	○	
Fold	○	○	○	○	○	○	○	×	○	
Output Tray	○	○	○	○	○	○	○	×	○	
Paper Arrangement	○	○	○	○	○	○	○	○	○	
Prioritize Arranging Papers	○	○	○	○	○	○	○	○	○	
Prioritize Productivity	○	○	○	○	○	○	○	○	○	

Table 7-5 List of support functions of each model (5/12)

Function (6/12)	A3 BW								
	95BW-9/ 80BW-9/ 75BW-9	55BW-9/ 45BW-9	36BW-8/ 28BW-8/ 22BW-8	75BW-5(e)/ 65BW-5 (e)	55BW-5e/ 45BW-5e/ 36BW-5e/ 28BW-5e/ 22BW-5e	36BW-9/ 30BW-9	65BW-9e/ 55BW-9e/ 45BW-9e/ 36BW-9e/ 30BW-9e	30BW-6i/ 26BW-6i/ 24BW-6i/ 22BW-6i	65BW-0i/ 55BW-0i/ 45BW-0i/ 36BW-0i/ 30BW-0i
Cover Mode									
Front Cover	○	○	○	○	○	○	○	○	○
Back Cover	○	○	○	○	○	○	○	○	○
Front Cover from Post Inserter	○	○	×	○	○	×	○	×	○
Back Cover from Post Inserter	○	○	×	○	○	×	○	×	○
Transparency Interleave	○	○	○	○	○	○	○	○	○
Stamp/Composition									
Watermark	○	○	○	○	○	○	○	○	○
Quality									
Select Color	×	×	×	×	×	×	×	×	×
Auto Color	×	×	×	×	×	×	×	×	×
Gray Scale	×	×	×	×	×	×	×	×	×
2 Color	×	×	×	×	×	×	×	×	×
Resolution	○	○	○	○	○	○	○	○	○
Toner Save	○	○	○	○	○	○	○	○	○
Other									
Quiet Mode	×	×	×	×	×	×	×	×	×
Improve Print Output	×	×	×	×	×	×	×	×	×
Device Settings	○	○	○	○	○	○	○	○	○
Language Setting	○	○	○	○	○	○	○	○	○
About	○	○	○	○	○	○	○	○	○

Table 7-6 List of support functions of each model (6/12)

Function (7/12)	A4 Color					
	C MF385-2/ C MF335-2/ C MF385-2FS	C MF385-1/ C MF335-1/ C MF385-1FS	C MF310P-1	C MF311-1	C405-0i/ C335-0i	C400-0i/ C330-0i/ C332-0i
Basic						
Original Orientation	○	○	○	○	○	○
Original Size	○	○	○	○	○	○
Paper Size	○	○	○	○	○	○
Zoom	○	○	○	○	○	○
Paper Tray	○	○	○	○	○	○
Paper Type	○	○	○	○	○	○
Copies	○	○	○	○	○	○
Collate	○	○	○	○	○	○
Offset	○	○	×	×	×	×
Output Method	○	○	○	○	○	○
Print	○	○	○	○	○	○
Store Job	×	○	○	○	×	○
Print and Hold	×	○	○	○	×	○
Secure Print	○	○	○	○	○	×
Save in User Box	○	×	×	×	○	×
Save in User Box/Print	○	×	×	×	○	×
Proof Print	○	○	○	○	○	○
ID& Print	○	○	○	○	○	×
*2: Model =3300P,3301P、×    *3: Model =3602P、×						

Table 7-7 List of support functions of each model (7/12)



Function (8/12)		A4 Color					
		C3851/ C3351/ C3851FS	C3350/ C3850/ C3850FS	C3100P	C3110	C4050i/ C3350i	C4000i/ C3300i/ C3320i
	Authentication/Account Track	○	○	○	○	○	○
	User Authentication	○	○	○	○	○	○
	Enhanced Server	○	○	○	○	○	○
	External Server	○	○	×	×	○	○
	Device	○	○	○	○	○	○
	Account Track	○	○	○	○	○	○
Layout							
	Combination (N in 1)	○	○	○	○	○	○
	Poster	○	○	○	○	○	○
	Rotate 180	○	○	○	○	○	○
	Skip Blank Pages	○	○	○	○	○	○
	Print Type	○	○	○	○	○	○
	1-Sided	○	○	○	○	○	○
	2-Sided	○	○	○	○	○	○
	Booklet (Device)	○	×	×	×	○	○
	Booklet (Driver)	×	○	○	○	×	×
	Binding Position	○	○	○	○	○	○
	Binding Margin	○	○	○	○	○	○
Finish							
	Staple	○	○	×	×	×	×
	Center Staple and Fold	×	×	×	×	×	×
	Punch	×	×	×	×	×	×
	Fold	×	×	×	×	×	×
	Output Tray	×	×	×	×	×	×
	Paper Arrangement	○	×	×	×	○	○
	Prioritize Arranging Papers	○	×	×	×	○	○
	Prioritize Productivity	○	×	×	×	○	○

Table 7-8 List of support functions of each model (8/12)

Function (9/12)	A4 Color					
	C3851/ C3351/ C3851FS	C3350/ C3850/ C3850FS	C3100P	C3110	C4050i/ C3350i	C4000i/ C3300i/ C3320i
Cover Mode						
Front Cover	○	×	×	×	○	○
Back Cover	○	×	×	×	○	○
Front Cover from Post Inserter	×	×	×	×	×	×
Back Cover from Post Inserter	×	×	×	×	×	×
Transparency Interleave	×	×	×	×	×	×
Stamp/Composition						
Watermark	○	○	○	○	○	○
Quality						
Select Color	○	○	○	○	○	○
Auto Color	○	○	○	○	○	○
Gray Scale	○	○	○	○	○	○
2 Color	○	×	×	×	○	○
Resolution	○	○	○	○	○	○
Toner Save	○	○	○	○	○	○
Other						
Quiet Mode	×	×	×	×	×	×
Improve Print Output	×	×	×	×	×	×
Device Settings	○	○	○	○	○	○
Language Setting	○	○	○	○	○	○
About	○	○	○	○	○	○

Table 7-9 List of support functions of each model (9/12)

Function (10/12)	A4 BW								
	BW MF475-1/ BW MF405-1	LP4700-1/ LP4000-1/ LP3300-1/ LP3301-1	BW MF402-1/ BW MF332-1	BW MF475-3/ BW MF405-3	LP470P-3/ LP440P-3/ LP360P-3	BW MF442-3/ BW MF362-3	BW 502-0i/ BW 500-0i/ BW 402-0i/ BW 400-0i	BW475-0i/ BW405-0i	BW470-0i
Basic									
Original Orientation	○	○	○	○	○	○	○	○	○
Original Size	○	○	○	○	○	○	○	○	○
Paper Size	○	○	○	○	○	○	○	○	○
Zoom	○	○	○	○	○	○	○	○	○
Paper Tray	○	○	○	○	○	○	○	○	○
Paper Type	○	○	○	○	○	○	○	○	○
Copies	○	○	○	○	○	○	○	○	○
Collate	○	○	○	○	○	○	○	○	○
Offset	×	×	×	×	×	×	×	×	×
Output Method	○	○	○	○	○	○	○	○	○
Print	○	○	○	○	○	○	○	○	○
Store Job	○	○ *2	○	×	○ *3	○	×	×	×
Print and Hold	○	○ *2	○	×	○ *3	○	×	×	×
Secure Print	○	○ *2	○	○	○ *3	○	○	○	×
Save in User Box	×	×	×	○	×	×	×	○	×
Save in User Box/Print	×	×	×	○	×	×	×	○	×
Proof Print	○	○ *2	○	○	○ *3	○	×	○	○
ID& Print	○	×	×	○	×	×	×	○	×
*2: Model =3300P,3301P、 ×   *3: Model =3602P、 ×									

Table 7-10 List of support functions of each model (10/12)

Function (11/12)		A4 BW								
		4750/ 4050	4700P/ 4000P/ 3300P/ 3301P	4020/ 3320	4752/ 4052	4702P/ 4402P/ 3602P	4422/ 3622	5020i/ 5000i/ 4020i/ 4000i	4750i/ 4050i	4700i
	Authentication/Account Track	○	×	×	○	×	×	×	○	○
	User Authentication	○	×	×	○	×	×	×	○	○
	Enhanced Server	○	×	×	○	×	×	×	○	○
	External Server	○	×	×	○	×	×	×	○	○
	Device	○	×	×	○	×	×	×	○	○
	Account Track	○	×	×	○	×	×	×	○	○
Layout										
	Combination (N in 1)	○	○	○	○	○	○	○	○	○
	Poster	○	○	○	○	○	○	○	○	○
	Rotate 180	○	○	○	○	○	○	○	○	○
	Skip Blank Pages	○	○	○	○	○	○	○	○	○
	Print Type	○	○	○	○	○	○	○	○	○
	1-Sided	○	○	○	○	○	○	○	○	○
	2-Sided	○	○	○	○	○	○	○	○	○
	Booklet (Device)	×	×	×	○	×	×	×	○	○
	Booklet (Driver)	○	○	○	×	○	○	○	×	×
	Binding Position	○	○	○	○	○	○	○	○	○
	Binding Margin	○	○	○	○	○	○	○	○	○
Finish										
	Staple	○	×	×	○	×	×	×	×	×
	Center Staple and Fold	×	×	×	×	×	×	×	×	×
	Punch	×	×	×	×	×	×	×	×	×
	Fold	×	×	×	×	×	×	×	×	×
	Output Tray	×	×	×	×	×	×	×	×	×
	Paper Arrangement	×	×	×	○	×	×	×	○	○
	Prioritize Arranging Papers	×	×	×	○	×	×	×	○	○
	Prioritize Productivity	×	×	×	○	×	×	×	○	○

Table 7-11 List of support functions of each model (11/12)

Function (12/12)	A4 BW								
	4750/ 4050	4700P/ 4000P/ 3300P/ 3301P	4020/ 3320	4752/ 4052	4702P/ 4402P/ 3602P	4422/ 3622	5020i/ 5000i/ 4020i/ 4000i	4750i/ 4050i	4700i
Cover Mode									
Front Cover	×	×	×	○	×	×	×	○	○
Back Cover	×	×	×	○	×	×	×	○	○
Front Cover from Post Inserter	×	×	×	×	×	×	×	×	×
Back Cover from Post Inserter	×	×	×	×	×	×	×	×	×
Transparency Interleave	×	×	×	×	×	×	×	×	×
Stamp/Composition									
Watermark	○	○	○	○	○	○	○	○	○
Quality									
Select Color	×	×	×	×	×	×	×	×	×
Auto Color	×	×	×	×	×	×	×	×	×
Gray Scale	×	×	×	×	×	×	×	×	×
2 Color	×	×	×	×	×	×	×	×	×
Resolution	○	○	○	○	○	○	○	○	○
Toner Save	○	○	○	○	○	○	○	○	○
Other									
Quiet Mode	×	×	×	×	×	×	○	×	×
Improve Print Output	×	×	×	×	×	×	○	×	×
Device Settings	○	○	○	○	○	○	○	○	○
Language Setting	○	○	○	○	○	○	○	○	○
About	○	○	○	○	○	○	○	○	○

Table 7-12 List of support functions of each model (12/12)